

# ACE F170

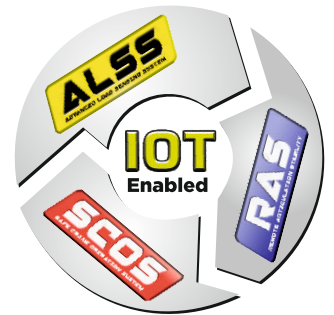
## Nextgen Hydraulic Crane Capacity: 17 tonnes

Rough Terrain and Rugged, 4x4  
Articulated NextGen Pick 'n' Carry Crane

**ACE** INDIA'S NO. 1  
CRANE BRAND

**CEVV**  
STAGE V

100%  
Swadeshi



# 4x4



# Specifications

# F 170

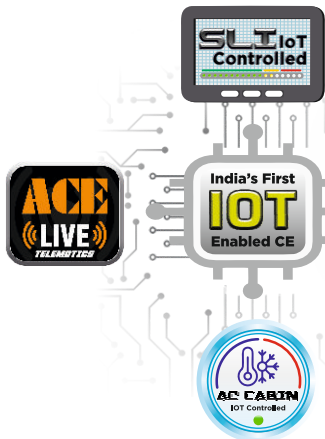
<b>LIFTING CAPACITY</b>	17 Tonnes
<b>ENGINE</b>	Tata (CEV V) Diesel Engine Model 497 4 cylinder, Water Cooled, Turbo Charged Engine with Electronic Control Unit (ECU)
Max. Rating	74 HP (54 kW) at 2200 RPM
<b>TRANSMISSION</b>	Heavy Duty Synchromesh Gearbox with 10 Forward and 2 reverse speeds. Auxilliary Gear Box with 2WD/4WD selector for High and Low speeds
Axles	Front axle is rigidly mounted on the chassis and Rear axle is mounted with 2 Nos. leaf Springs.
Drive	4 Wheel drive (4x4)
Clutch	Heavy Duty, single, dry friction type hydraulic clutch.
Top Speed	35 Kmph on even metaled Road (without load)
Creep Speed	1.3 Kmph
Gradeability	40 % (unladen)
<b>STEERING</b>	Hydraulically operated steering wheel with 40° Articulation on either side and turning radius of 7.5 Mtrs (approx) on outer rear wheels.
<b>BRAKES</b>	Pneumatically operated dual circuit brakes on Front and Rear wheels. Parking brake is pneumatically operated spring actuated fail safe type.
<b>HYDRAULIC SYSTEM</b>	<ul style="list-style-type: none"> <li>● Gear / Infra Vane type Main Pump. Five spools control valve with built in Relief Valve.</li> <li>● Suction line has 100 mesh size Strainer while return line is fitted with 25 micron filter.</li> <li>● Two double acting lift cylinders, one double acting extension cylinder and two double acting steering cylinders.</li> </ul>
<b>TELESCOPIC BOOM</b>	4 part slotted boom, 2 part hydraulically operated & synchronized and 4th part power extended (18.9 mtrs height)
<b>HOIST</b>	Winch is driven by hydraulic motor and fitted with rope tensioner. Hoisting is provided through self adjusting hook block employing 4/6 falls of 13 mm dia rope
Hoist Speed	50 Mtrs./Min. (Line Speed)

<b>TYRES</b>	11.00 x 20 - 16 PR (8 Nos.)
Wheel Base	4150 mm
Wheel Track	1825 mm
<b>ELECTRICAL SYSTEM</b>	12v, Negative Earth (110 AH Battery)
<b>SAFETY</b>	<ul style="list-style-type: none"> <li>● Hose Failure Protection</li> <li>● Audio Over hoisting Indication</li> <li>● Safety Brakes on Hoist</li> <li>● Self-Adjusting Hook Block</li> <li>● Front and rear wheel guards</li> </ul>
<b>STANDARD EQUIPMENT</b>	<ul style="list-style-type: none"> <li>● Front work lights</li> <li>● Reflectors and rear view mirror</li> <li>● Tool kit</li> <li>● Cabin fan</li> <li>● Wiper motor</li> <li>● Digital Cluster with display indications for :               <ul style="list-style-type: none"> <li>a) Fuel Level</li> <li>b) Low Fuel</li> <li>c) Engine Oil Pressure</li> <li>d) Air Pressure</li> <li>e) Low Air Pressure</li> <li>f) Parking Brake</li> <li>g) Coolant Temperature</li> <li>h) Engine RPM</li> <li>i) Engine Hour Recorder</li> <li>j) Speedo Meter</li> <li>k) Odometer</li> <li>l) Urea Level</li> <li>m) Water in Fuel</li> <li>n) Battery Charging</li> <li>o) Neutral Position Safe Start</li> <li>p) 2W/4WD Drive</li> <li>q) Regeneration</li> <li>r) Fault Detector Codes (P Code)</li> </ul> </li> <li>● Rear view Camera</li> <li>● Front Outriggers</li> <li>● Beacon Rotating Light</li> <li>● Regeneration Switch</li> </ul>
<b>OPTIONAL EQUIPMENT</b>	<ul style="list-style-type: none"> <li>● SLI - Safe Load Indicator</li> <li>● Air Conditioned (AC) cabin</li> <li>● Tata 101 HP Engine</li> <li>● Over Hoist hydraulic cutoff</li> <li>● Fly jib (1.25 Tonnes Max. Capacity)</li> <li>● Fire extinguisher</li> <li>● Cabin Front Glass Protector</li> <li>● Drag Winch</li> <li>● Helper / Slinger Seat</li> <li>● Man Basket Attachment</li> <li>● Front &amp; Side Proximity Sensors</li> <li>● ALSS, SCOS and RAS features for Safe Crane Operations.</li> <li>● ACE Live (Telematics) : IOT Device for Monitoring, Diagnosis and Remote Trouble Shooting.</li> <li>● IOT Controlled SLI.</li> <li>● IOT Controlled AC.</li> </ul>
<b>OPERATING WEIGHT</b>	17040 Kgs.



# ACE

## F170

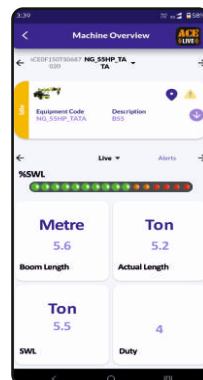
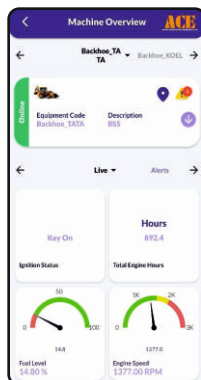
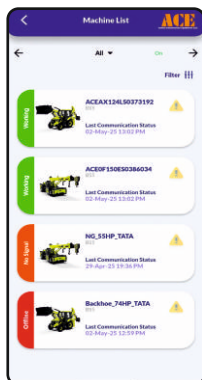


**ACE LIVE : SLI**  
IOT connected and controlled SLI for safe load / operation monitoring and control, providing improved safety and working at sites



### ACE LIVE : TELEMATICS

Smart connected machines with IOT Device for Live Monitoring and Diagnosis of various parameters and Remote Trouble Shooting



### AC CABIN

IOT controlled Air Conditioned Cabin for Operator comfort

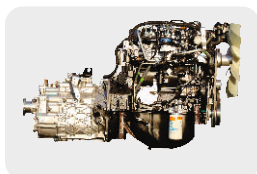


### OPTIMIZED KINEMATICS AND LOW C.G.

F 170 crane has been designed for operational safety with low Center of Gravity (C.G.) providing best in class stability



Safe Crane Operation System is a Fail Safe System which ensures that the machine is not overloaded and only safe functions are permitted, minimizing operator fault.



### ENGINE

Tata Model 497 (CEV V) Diesel Engine with nation wide service support and spares availability



Remote Articulation Stability ensures safe operations during articulation including movement with loads.



### ELECTRONIC CLUSTER

Digital Electronic Cluster with advanced features.



Advanced Load Sensing System ensures low speed 4WD mode during movement with loads (1000 kgs Plus)

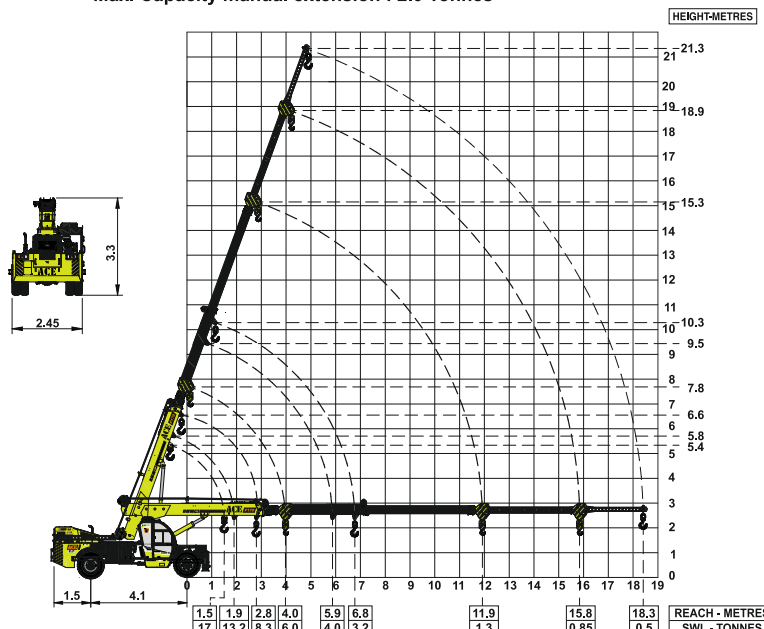


### STEERING WHEEL & CONTROLS

Ergonomically placed operator console and instrument cluster ensures ease of operation.

### F170 Crane with 4 part boom + Flyjib

- Max. Capacity Fly jib : 1.25 Tonnes
- Max. Capacity manual extension : 2.0 Tonnes



NOTE - SWL are based on 85% stability & strength.  
- Rated loads are on the basis of operation on firm and level surface.  
- Full rated lifting capacity available in articulated / steered condition.

ALL DIMENSIONS IN METERS ±5%.

# BUILT TO PERFORM

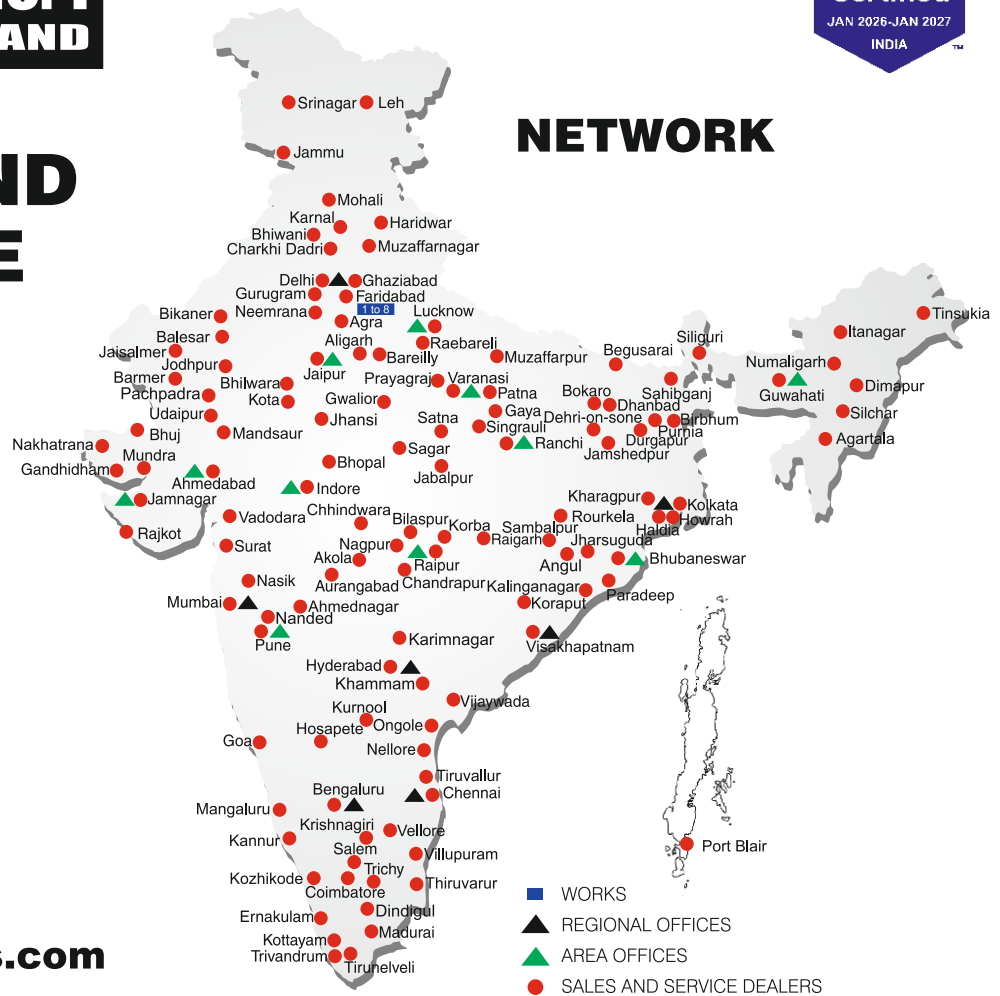


**ACE** INDIA'S NO. 1  
CRANE BRAND

Great Place To Work<sup>®</sup>  
Certified  
JAN 2026-JAN 2027  
INDIA

**RELIABLE AND  
DEPENDABLE  
EFFICIENCY**

## NETWORK



**Toll Free Help Line  
1800 1800 004**  
[www.ace-cranes.com](http://www.ace-cranes.com)

### MARKETING H.Q.

4th Floor, Pinnacle  
Surajkund, NCR-121009  
Ph.: +91-129-4550000  
Fax: +91-129-4550022  
E-mail: marketing@ace-cranes.com

### REGISTERED OFFICE

Dudhola Link Road, Dudhola  
Palwal-121102, Haryana  
Ph.: +91-1275-280111  
Fax: +91-1275-280133  
CIN: L74899HR1995PLC053860

### MUMBAI OFFICE

31, "Kalpataru Court"  
Chembur, Mumbai - 400074  
Ph.: +91-22-25206846, 25207070  
Fax: +91-22-25207071  
E-mail: ace-mumbai@ace-cranes.com

### KOLKATA OFFICE

84A, AJC Bose Road, Fomra Tower -  
2nd Floor, Kolkata-700014  
Ph.: +91-9038070630  
E-mail: acekolkata@ace-cranes.com

### CHENNAI OFFICE

1st Floor, "Alsa Regency", 165  
Eldams Road, Alwar Pet  
Chennai - 600018  
Ph.: +91-44-24314253  
Fax: +91-44-24314252  
E-mail: acechennai@ace-cranes.com

**HERE TO SERVE YOU.**



F170



Product Range



ACE Live

**ACE**

Action Construction Equipment Ltd.

Follow us on



ACE reserves the right to alter any specifications without prior notice. Dimensions, weights & capacities mentioned herein are variable by ± 5%. Accessories if shown are not part of the Standard Equipment.