



ACE AT350

Telescopic Telehandler

ACE INDIA'S NO. 1
CRANE BRAND



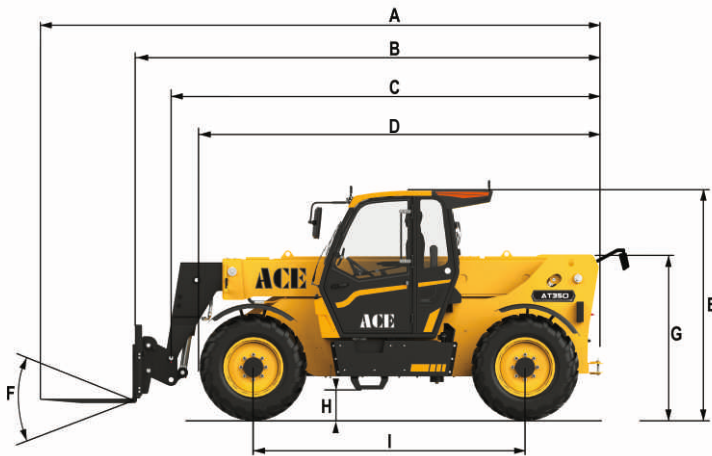
Specifications

AT350

| | |
|---|--|
| Performance | |
| - Rated Capacity | 3500 kg |
| - Capacity (at Max. Height on Tyres) | 2500 kg |
| - Capacity at Max. Reach | 1200 kg |
| - Max. Lifting Height | 7080 mm |
| - Max. Gradeability Unladen (24" Tyres) | 24 |
| - Max. Forward Reach | 3620 mm |
| Weights | |
| - Unladen Weight (24" Tyres) | 7510 kg |
| Engine | |
| - Make / Model | Perkins Tier-3 (1104D 44TA) |
| - Fuel | Diesel |
| - Rated Power (ISO 14396) | 74.5 kW |
| - Maximum Torque at 1400 pm | 405 Nm |
| - Number of Cylinders | 4 |
| Hydraulic system | |
| - Pump Type | Gear Pump |
| - Pump Capacity | 130 L/min |
| - Control Valve Type | Open Center with Flow Sharing & Flow Compensators Technology |
| Drive System | |
| - Transmission | Hydrostatic with Electronic Regulation |
| - Main Drive | Hydrostatic Motor with Dual Speed Gearbox |
| - Max Speed | 28 Kimph |
| Brakes | |
| - Engine Braking | Hydrostatic |
| - Parking and Emergency Brake | Negative Parking Brake on Front Axle Operated by Electric Switch |
| - Service Brake | Hydraulic Actuated Wet Disc Brake |
| Axles | |
| - Front Axle | Drive Axle Rigidly Mounted with Limited Slip Differential |
| - Real Axle | Steerable Drive Axle Centrally Swing-ing Type, Driven by Propeler Shaft From Gear Box_Mounted on Front Axle. |
| - Drive Mode | 4WD |
| Steering | |
| - Steering Mode | 2 Wheel Steering-Front / 4 Wheel Steering / Crab-Steering |

| | | |
|--|--|---|
| Cabin | | A Fully Adjustable Seat with Ergo - Nomically Positioned Controls and Steering Wheel to Maximise Operator Output. |
| Tyres | | |
| - Standard Tyres | | 405/70-24 . 14 PR (MPT800 TL) |
| Safety Features (Standard) | | |
| - Over Centre Valves | | Hold Lifted Load in Position (In Case of Hose Burst) |
| - Over-Load Safety System | | SaHR System |
| Additional Features | | |
| | | - Rear Towing Hook (12 Ton Capacity) |
| | | - Cold Start Kit |
| | | - Wiper Package |
| | | - Auxilliary Port for Attachments |
| | | - Reversible Fan |
| Attachments (Standard) | | |
| - Fork | | 3.5 Ton (L-1070 mm) |
| Optional Attachment & Accessories | | |
| | | - Front Windshield Guard |
| | | - Crane Hook Capacity 3 Ton |
| | | - Man Platform with Capacity 200kg |
| | | - Grain Bucket with 2.34 cu |
| | | - ROPS & FOPS Cabin |
| Fluid Capacities | | |
| - Fuel Tank | | 100L |
| - Hydraulic Tank | | 138L |
| - Hydraulic System | | 65L |
| Dimensions | | |
| (A) | | 6200 mm |
| (B) | | 5100 mm |
| (C) | | 4710 mm |
| (D) | | 4410 mm |
| (E) | | 2500 mm |
| (F) | | 155 mm |
| (G) | | 1798 mm |
| (H) | | 305 mm |
| (I) | | 3000 mm |
| (J) | | 890 mm |
| (K) | | 1940 mm |
| (L) | | 2345 mm |

ACE



ATTACHMENT



BUCKET 0.25 CuM

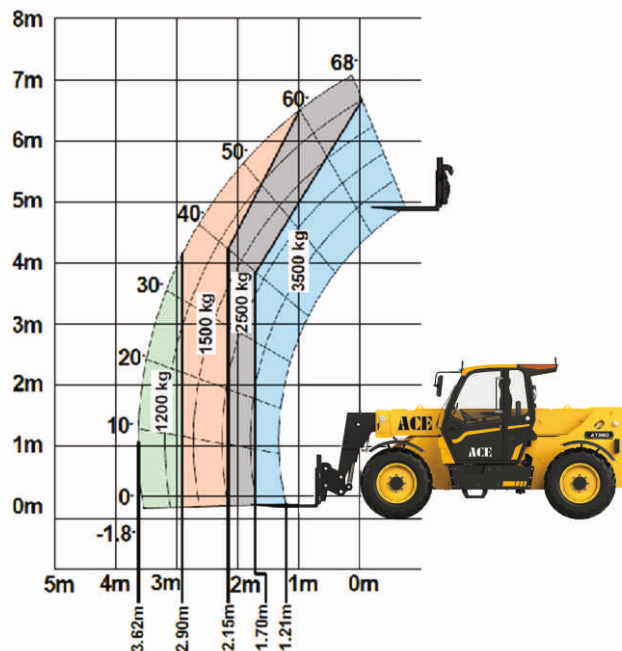


FORK - 3 TON



CRANE HOOK 3 TON

LOAD CHART TELEHANDLER AT350

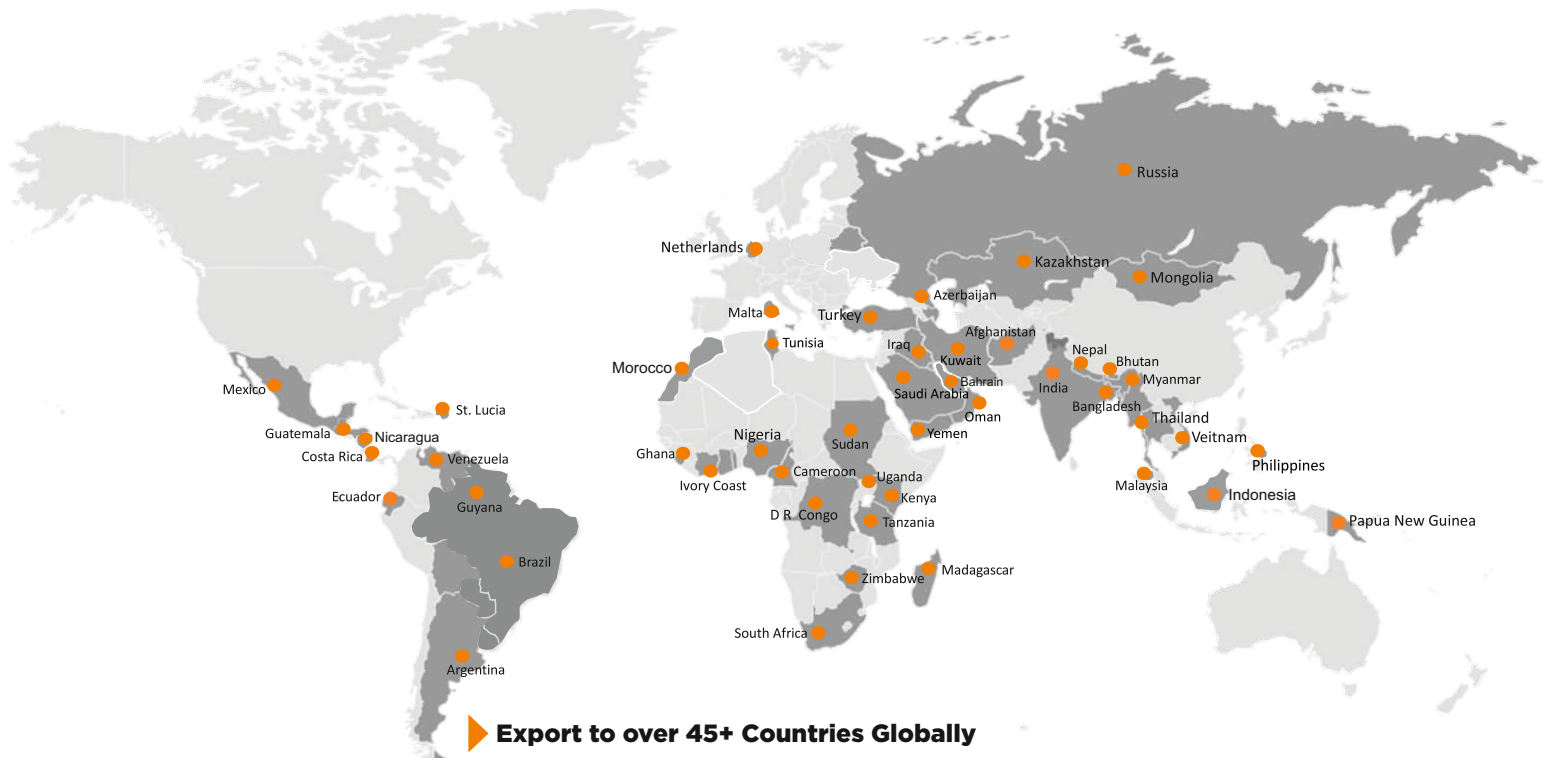


*All dimensions and weights are variable with in $\pm 5\%$

BUILT TO PERFORM



NETWORK



RELIABLE AND DEPENDABLE EFFICIENCY

MARKETING H.Q.

4th Floor, Pinnacle
Surajkund, NCR-121009
Ph. : +91-129-4550000
Fax : +91-129-4550022
E-mail: marketing@ace-cranes.com

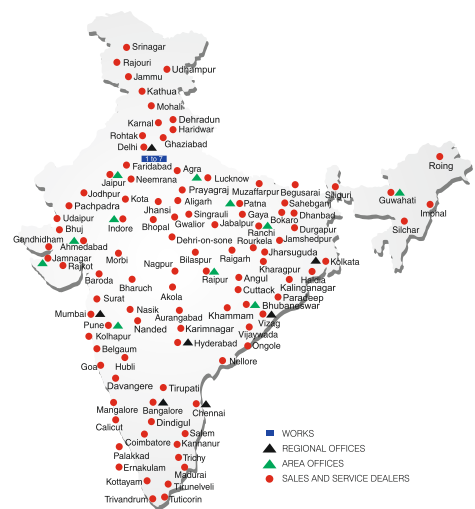
REGISTERED OFFICE

Dudhola Link Road, Dudhola
Palwal-121102, Haryana
Ph.: +91-1275-280111
Fax: +91-1275-280133
CIN : L74899HR1995PLC053860

HERE TO SERVE YOU.

SPARE PARTS & SERVICE

ACE has all India Sales and Service network operating out of all the major cities. These outlets are fully equipped to provide genuine spare parts and services by company trained engineers. These outlets are further supported by company officials based at Delhi, Mumbai, Chennai, Kolkata, Ahmedabad, Surat, Pune, Jaipur, Chandigarh, Ranchi, Raipur, Indore, Bhubaneswar, Lucknow, Jamnagar, Hyderabad, Bangalore, Guwahati, Patna, Vizag & Kochi.



Action Construction Equipment Ltd.

Contact:



ACE reserves the right to alter any specifications without prior notice. Dimensions, weights & capacities mentioned herein are variable by $\pm 5\%$. Accessories if shown are not part of the Standard Equipment.