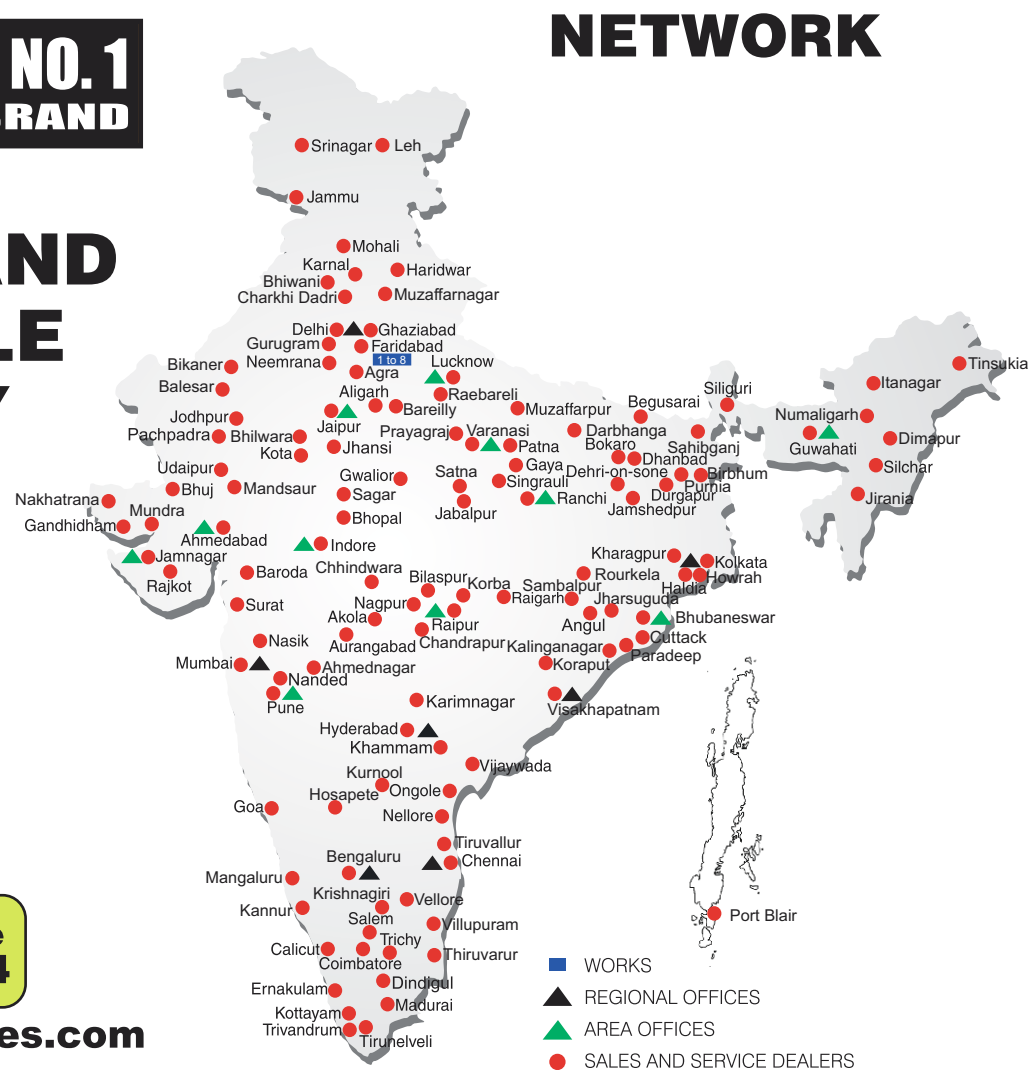


BUILT TO PERFORM



ACE INDIA'S NO. 1
CRANE BRAND

**RELIABLE AND
DEPENDABLE
EFFICIENCY**



**Toll Free Help Line
1800 1800 004**
www.ace-cranes.com

MARKETING H.Q.

4th Floor, Pinnacle
Surajkund, NCR-121009
Ph.: +91-129-4550000
Fax: +91-129-4550022
E-mail: marketing@ace-cranes.com

REGISTERED OFFICE

Dudhola Link Road, Dudhola
Palwal-121102, Haryana
Ph.: +91-1275-280111
Fax: +91-1275-280133
CIN : L74899HR1995PLC053860

MUMBAI OFFICE

31, "Kalpataru Court"
Chembur, Mumbai - 400074
Ph.: +91-22-25206846, 25207070
Fax: +91-22-25207071
E-mail: acemumbai@ace-cranes.com

KOLKATA OFFICE

84A, A/C Bose Road, Fomra Tower -
2nd Floor, Kolkata-700014
Ph.: +91-9038070630
E-mail: acekolkata@ace-cranes.com

CHENNAI OFFICE

1st Floor, "Alsa Regency", 165
Eldams Road, Alwar Pet
Chennai - 600018
Ph.: +91-44-24314253
Fax: +91-44-24314252
E-mail: acechennai@ace-cranes.com

HERE TO SERVE YOU.

TM600

We will generate
QR Code later.



ACE

Action Construction Equipment Ltd.

Follow us on



ACE reserves the right to alter any specifications without prior notice. Dimensions, weights & capacities mentioned herein are variable by ± 5%. Accessories if shown are not part of the Standard Equipment.

TM600/11/25

100%
Swadeshi

ACE
TM 600

Truck Crane

Rugged and reliable
60T capacity
8x4 Drive Truck Crane

ACE INDIA'S NO. 1
CRANE BRAND



ACE

Mobile Cranes (9-250 Tonnes)



Tractors



Harvester Combine



Forklifts



Vibratory Rollers



Backhoe Loader



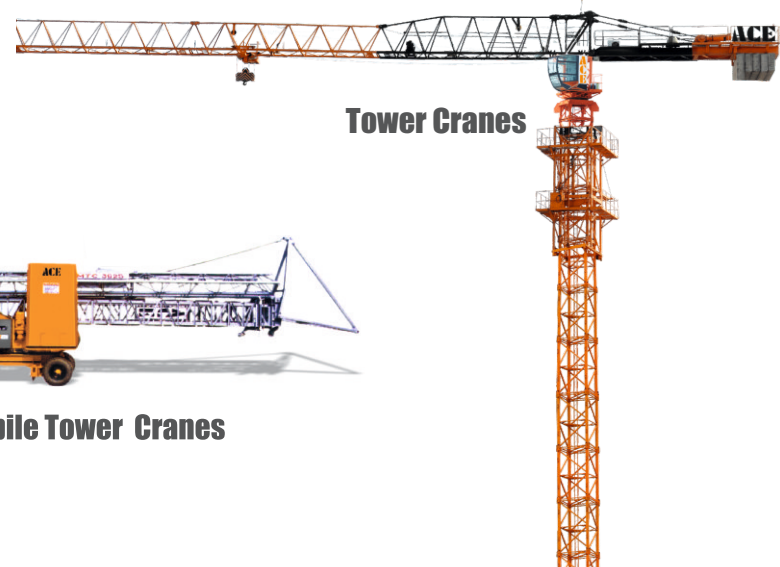
Motor Grader



Piling Rigs



Tower Cranes



Mobile Tower Cranes

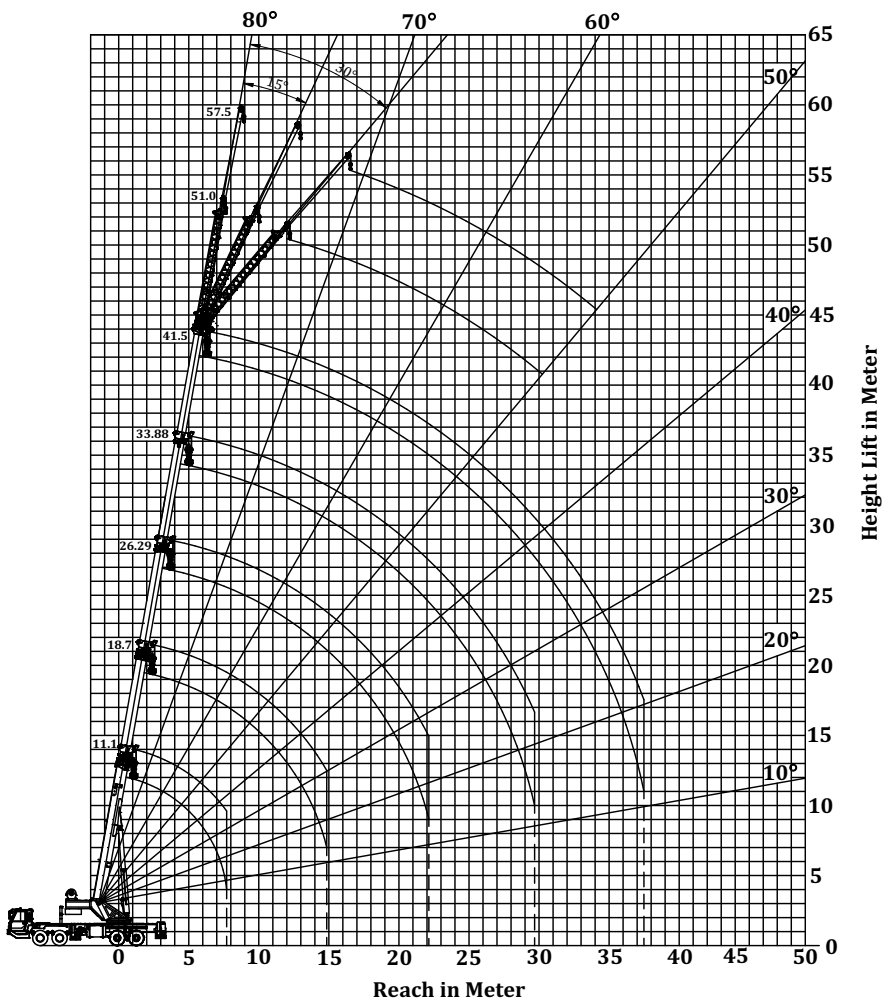


TM 600

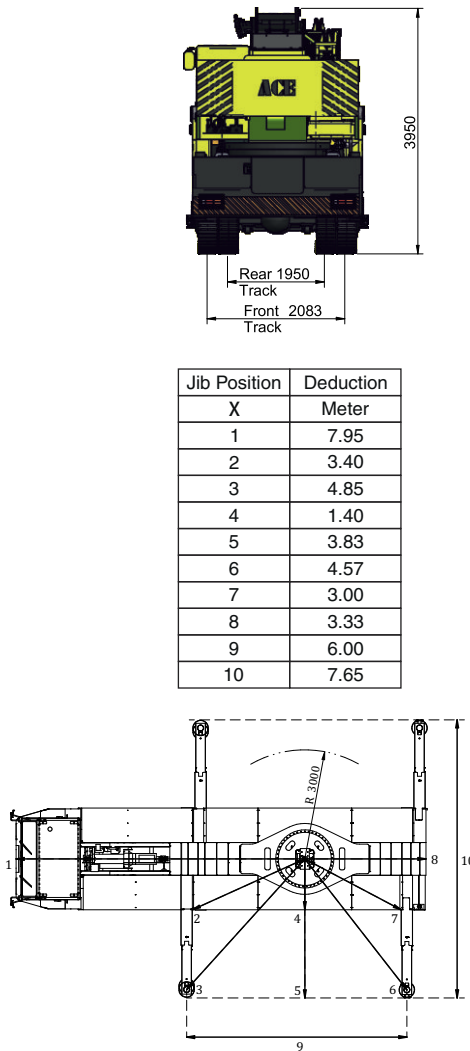
60 Tons



Lifting Height / Working Range Diagram



Dimensions



Specifications

Crane Chassis	<ul style="list-style-type: none">Torsion proof chassis fabricated from high tensile steel plates. Outrigger boxes are integrated with the chassis.Drive is 8x4x4 (4 wheel drive and 4 wheel steer)Full width driver cabin is provided with driver and co-driver seating arrangements.
Engine	Mahindra Power or suitable, turbo charged, inter cooled diesel engine developing 265 bhp@ 2200 rpm
Clutch	Single plate (395mm), Dry, hydraulic actuated diaphragm type
Transmission	Nine speed synchromesh gear box with crawler gear and one speed reverse gear
Top Speed	49 Kmph.
Brakes	Air pressurized diaphragm operated with dual line arrangement. Flick valves operated pneumatic hand brake on rear and service brake on all wheels
Tyre Size	12.00 X 20-16 ply rating(12+1 Nos.)
Outrigger	Four hydraulically operated telescopic outrigger fitted with lock valve. Outrigger blocks are removable and stowable. Fifth outrigger is also provided below the cabin.
Hydraulic System	Triple Gear pump driven by transmission P.T.O, supplies oil to all circuits except steering system.
Super Structure	Fabricated with high tensile steel plates and is capable of unlimited slewing in either direction. Super structure is mounted on a sealed internal teeth slew ring.
Boom Derricking	Double acting hydraulic cylinder with counter balance safety valve.
Slewing	Piston type hydraulic motor drives a pinion through reduction gear unit. Double counter balance valve is provided for smooth control of operations.
Boom Telescopic	Five part hexagon construction boom is fabricated from high tensile plates and is extendable from 11.1m to 41.5m by twin double acting hydraulic cylinders. Counter balance valve is provided for both cylinders for safety of the load.

TM600

Hoist System	Hoist winch is provided with piston type hydraulic motor driving grooved hoist barrel via reduction gear unit. The system is fitted with counter balance valve to control the speed of lowering and to hold the lifted load.
Hook Block	6 sheaves hook block is provided
Hoist Rope	18 mm diameter.
Capacities	Hydraulic Tank 700 Lts. Fuel Tank 335 Lts.
Operator's Cabin (Crane)	Cabin with maximum all round vision is fitted. All controls for crane motion and electrical controls are provided in the cabin. Cabin is fitted with fan and lights.
Safety Equipment	<ul style="list-style-type: none">Safe load indicator provides radius and hook load indication with visual indication of approach to overload and audible indication of over load condition.Overload and Over hoist cut-off.Pressure relief in main circuit.Pilot operated check valves are provided in all the load lifting cylinders.
Performance Data	<ul style="list-style-type: none">Derrick Angle -2° to 80°Derricking time 45-80 secs (In & out)Telescoping time 80-90 secsSlew 0-2 RPMHoist Single line speed 90 m/min.Outriggers<ul style="list-style-type: none">Out 34 secsIn 26 secsDown 30 secsUp 38 secs
Axle loads	Front axle weight 12670 kgs. Rear axles weight 26285 kgs. Total weight 38955 kgs.
Optional Equipment	Side folding lattice jib - 9 to 16 mtrs with three offset positions.

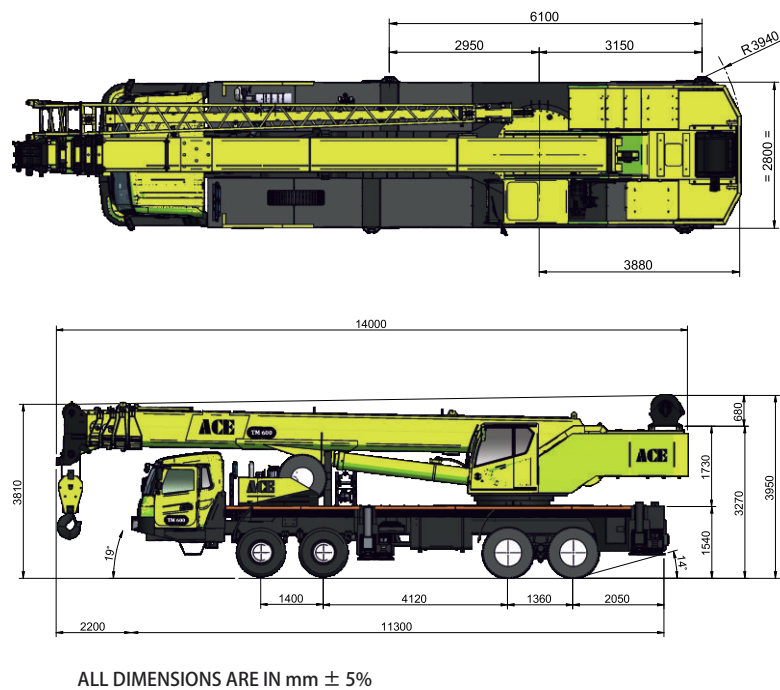
Rated Lifting Capacity (in Kgs.) 85% Rating

TM600

Radius Meter	360° BLOCKED				
	Jib Closed 11.1 M	Jib Extended 11.1M-18.7M	Jib Extended 18.7M-26.3M	Jib Extended 26.3M-33.9M	Jib Extended 33.9M-41.5M
Meter	Kgs.	Kgs.	Kgs.	Kgs.	Kgs.
3.0	60000				
3.5	55100	35100			
4.0	48000	35000			
4.5	45200	33200	24700		
5.0	41100	30100	24350	17650	
5.5	36200	28000	24200	17600	
6.0	32600	26400	22400	17550	
6.5	29400	25100	21100	17500	
7.0	26500	24200	20200	17400	
7.5	23400	2200	18900	16900	
8.0	20700	20900	18000	16200	9700
9.0	16150	15600	16650	14600	9600
10.0		12800	13600	13500	9350
11.0		10100	11200	11400	9000
12.0		8300	9300	10200	8600
14.0		5750	6800	7500	7400
16.0		3850	4950	5750	6750
18.0			3650	4300	4900
20.0			2700	3150	3900
22.0			1900	2500	3050
24.0				1800	2500
26.0				1200	2000

1. The above capacities are in accordance with Indian Standard Code - IS:4573-1982.
2. Rated loads do not exceed 85% of tipping load at rated radius. The loads shown are gross loads and the weight of the hook block, slings, lifting tackle etc. must be considered as part of the rated load.
3. Outriggers to be deployed in fully extended and jacked position on firm & rigid leveled surface.

Overall Dimensions



Capacity with Fly Jib (Kgs.)

Elevation of Main Boom	Main Boom + Jib					
	Installation of jib 41.5m+9.5			Installation of jib 41.5m+16		
	0°	15°	30°	0°	15°	30°
80°	4500	3600	2150	2800	2200	1000
78°	4500	3600	2050	2600	2000	1000
76°	4200	3150	1950	2300	1850	1000
74°	3800	2750	1900	2000	1700	1000
72°	3000	2550	1850	1800	1550	1000
70°	2300	2350	1650	1650	1400	1000
68°	1700	2100	1500	1350	1250	900
66°	1200	1950	1400	900	1100	800
64°	800	1700	1300	600	900	500
62°	500	1650	1150		800	400
60°		1600	1000		750	
58°		1100	850		700	
56°		1000	750			
54°		800	600			
52°		650	500			
50°		450				