

ACE F300

Nextgen Hydraulic Crane Capacity : 30 tonnes

Rough terrain and rugged, 4x4 articulated NextGen pick 'n' move crane

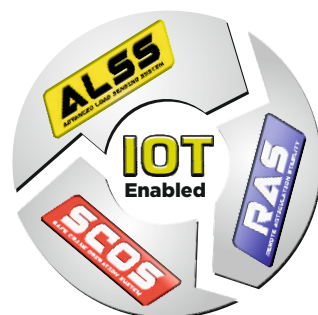
ACE INDIA'S NO. 1
CRANE BRAND

CEV
STAGE 

100%
Swadeshi 



4x4



Specifications

F-300

LIFTING CAPACITY	30 Tonnes
ENGINE	Ashok leyland (CEV BSV), 4 cylinder water cooled diesel engine, model H4C5413022 with Electronic Control Unit (ECU)
Rated Power	130 HP (95.6 kW) at 2200 RPM
TRANSMISSION	Heavy Duty Synchromesh with 12 Forward and 2 reverse speeds. Auxiliary Gear Box with 2WD-High / 4WD-Low selector.
Axles	Front axle is rigidly mounted on the chassis. Rear drive axle is mounted with 2 nos. heavy duty leaf springs.
Drive	4 Wheel drive (4x4).
Clutch	Heavy duty, single, dry friction type pneumatic assisted hydraulic clutch.
Creep Speed	1.3 KMPH
Top Speed	39 KMPH on even metalled Road (without load)
Gradeability	40 % (unladen)
BRAKES	<ul style="list-style-type: none">• Dual Circuit Brakes• Fully Pneumatic brakes on front and rear wheels.• Parking brake is pneumatically operated, fail safe type
STEERING	Full power orbitrol with twin hydraulic double acting cylinders and 40° articulation on either side
Turning Radius	8.25 Mtrs. on outer rear wheels.
TELESCOPIC BOOM	4 part slotted boom, 2 part hydraulically operated & synchronized and 4th part power extended
HOIST	4 Tonnes Line Pull Winch is driven by hydraulic motor and fitted with rope tensioner. Hoisting is provided through self adjusting hook block employing 6 falls of 13mm dia. Rope.
Hoist Speed	35 Mtrs./Min (Line Speed)
ELECTRICAL SYSTEM	12v, Negative Earth (130 AH Battery)
TYRES	
Front	12.00x24 (4 NOS.)
Rear	12.00x24 (4 NOS.)
Wheel Base	4900 mm
Wheel Track	1980 mm

HYDRAULIC SYSTEM

- Gear/Intra Vane type main pump
- Five spools control valve with built in Relief Valve (Heavy duty)
- Suction line has 100 mesh size strainer while return line is fitted with 25 micron filter.
- Two double acting lift cylinders, two double acting steering cylinders and one double acting extension cylinder.

SAFETY

- Hose failure protection
- Audio over hoisting Indication
- Safety brakes on hoist
- Self-adjusting hook block
- Front and rear wheel guards

STANDARD EQUIPMENT

- Front work lights
- Reflectors and rear view mirror
- Tool kit
- Cabin fan
- Wiper motor
- Digital Cluster with display indications for :
 - a) Fuel Level
 - b) Low Fuel
 - c) Engine Oil Pressure
 - d) Air Pressure
 - e) Low Air Pressure
 - f) Parking Brake
 - g) Coolant Temperature
 - h) Engine RPM
 - i) Engine Hour Recorder
 - j) Speedo Meter
 - k) Odometer
 - l) Urea Level
 - m) Water in Fuel
 - n) Battery Charging
 - o) Neutral Position Safe Start
 - p) 2W/4WD Drive
 - q) Regeneration
 - r) Fault Detector Codes (P Code)
- Rear view Camera
- Front Outriggers
- Beacon Rotating Light
- Regeneration Switch

OPTIONAL EQUIPMENT

- Air Conditioned (AC) cabin
- SLI - Safe Load Indicator
- Fly jib (1.25 Tonnes Max. Capacity)
- Over Hoist hydraulic cutoff
- Fire extinguisher
- Cabin Front Glass Protector
- Helper / Slinger Seat
- Drag Winch
- Front & Side Proximity Sensors
- Man Basket Attachment



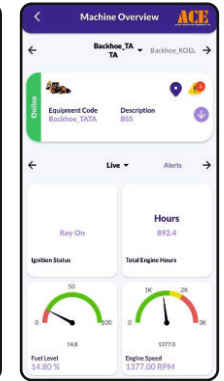
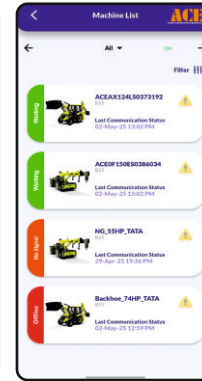
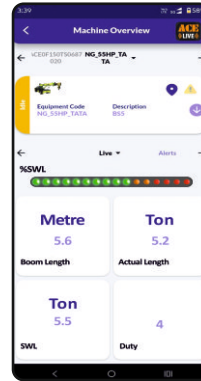
- ALSS, SCOS and RAS features for Safe Crane Operations.
- ACE Live (Telematics) : IOT Device for Monitoring, Diagnosis and Remote Trouble Shooting.
- IOT Controlled SLI.
- IOT Controlled AC.

OPERATING WEIGHT

23240 Kgs.

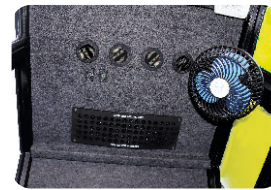
ACE

4x44



ACE LIVE : TELEMATICS
Smart connected machines with IOT Device for Live Monitoring and Diagnosis of various parameters and Remote Trouble Shooting

ULTRA



AC CABIN

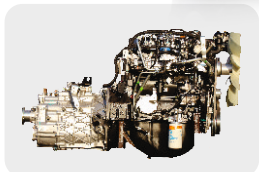
IOT controlled Air Conditioned Cabin for Operator comfort

ULTRA



OPTIMIZED KINEMATICS AND LOW C.G.

F 300 crane has been designed for operational safety with low Center of Gravity (C.G.) providing best in class stability



ENGINE

Ashok Leyland (CEV V) Diesel Engine with nation wide service support and spares availability



Advanced Load Sensing System ensures low speed 4WD mode during movement with loads (1500 kgs Plus)



ACE LIVE : SLI
IOT connected and controlled SLI for safe load / operation monitoring and control, providing improved safety and working at sites

ULTRA

ACE F300 Model Crane fitted with 3 part slotted boom + 1 Manual (19.3 mtrs. height)

- Max. Capacity Fly jib : 1.25 Tonnes
- Max. Capacity manual extension : 2.0 Tonnes



ELECTRONIC CLUSTER
Digital Electronic Cluster with advanced features.



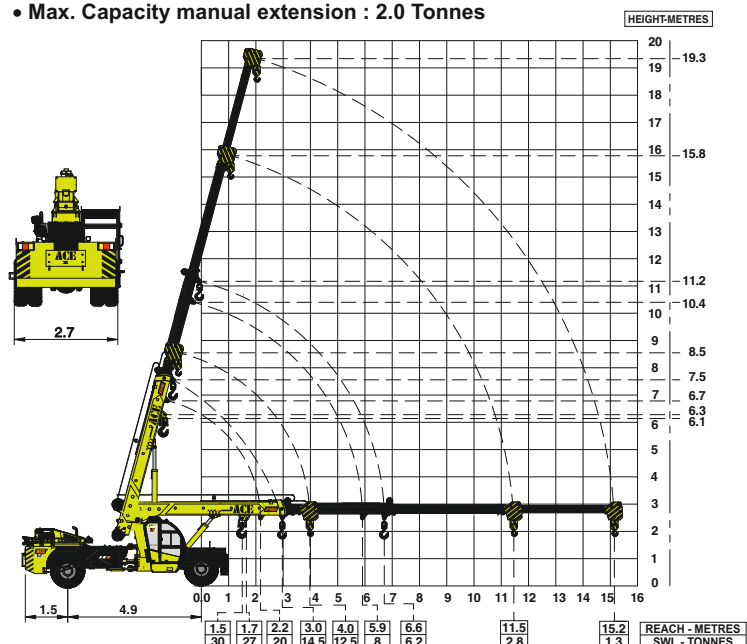
Safe Crane Operation System is a Fail Safe System which ensures that the machine is not overloaded and only safe functions are permitted, minimizing operator fault.



STEERING WHEEL & CONTROLS
Ergonomically placed operator console and instrument cluster ensures ease of operation.



Remote Articulation Stability ensures safe operations during articulation including movement with loads.



NOTE - SWL are based on 85% stability & strength.
- Rated loads are on the basis of operation on firm and level surface.
- Full rated lifting capacity available in articulated / steered condition.

ALL DIMENSIONS IN ±5%

A horizontal row of various construction equipment, including cranes, excavators, and trucks, displayed against a light blue background.

ACE

RELIABLE AND DEPENDABLE EFFICIENCY



Toll Free Help Line
1800 1800 004

www.ace-cranes.com

4th Floor, Pinnacle
Surajkund, NCR-121009
Ph. : +91-129-4550000
Fax : +91-129-4550022
E-mail: marketing@ace-cranes.com

Dudhola Link Road, Dudhola
Palwal-121102, Haryana
Ph.: +91-1275-280111
Fax: +91-1275-280133
CIN : L74899HR1995PLC053860

31, "Kalpataru Court"
Chembur, Mumbai - 400074
Ph.: +91-22-25206846, 25207070
Fax: +91-22-25207071
E-mail: acemumbai@ace-cranes.com

84A, AJC Bose Road, Fomra Tower -
2nd Floor, Kolkata-700014
Ph.: +91-9038070630
E-mail: acekolkata@ace-cranes.com

1st Floor, "Alsa Regency", 165
Eldams Road, Alwar Pet
Chennai - 600018
Ph.: +91-44-24314253
Fax: +91-44-24314252
E-mail: acechennai@ace-cranes.com

HERE TO SERVE YOU.



ACE

Follow us on



ACE reserves the right to alter any specifications without prior notice. Dimensions, weights & capacities mentioned herein are variable by $\pm 5\%$. Accessories if shown are not part of the Standard Equipment.