

100%  
Swadeshi

# ACE NXP170

## NextGen Manlift Crane

Crane Capacity : 17 tonnes  
Man Lift Height : 25 Meters  
Aerial Access Platform cum  
Articulated Rough Terrain Crane

**ACE** INDIA'S NO.1  
CRANE BRAND

**CEV**  
STAGE



4x4



## Specifications

## NXP 170

|                               |   |
|-------------------------------|---|
| <b>LIFTING CAPACITY</b>       | 17 Tonnes Pick 'N' Carry Duty<br>230 Kgs Aerial Platform Duty   |
| <b>ENGINE</b>                 | Tata (CEV V), Diesel Engine, Model 497,<br>4 cylinder, Water Cooled, Turbo Charged<br>Engine with Electronic Control Unit (ECU)   |
| Max. Rating                   | 74 HP (54 kW) at 2200 RPM   |
| <b>TRANSMISSION</b>           | Heavy Duty Synchromesh with<br>10 Forward and 2 reverse speeds.<br>Auxilliary Gear Box with 2WD-High/4WD<br>-Low selector.  |
| Axles                         | Front axle is rigidly mounted on the<br>chassis and Rear axle is mounted<br>with 2 Nos. leaf Springs.   |
| Drive                         | 4 wheel drive (4x4)   |
| Clutch                        | Heavy Duty, single, dry friction type<br>pneumatic assisted hydraulic clutch.   |
| Top Speed                     | 35 Kmph on even metallated<br>Road (without load)   |
| Creep Speed                   | 1.3 Kmph  |
| Gradeability                  | 40% (unladen)   |
| <b>BRAKES</b>                 | Pneumatically operated dual circuit<br>brakes on Front and Rear wheels.<br>Parking brake is pneumatically operated<br>spring actuated fail safe type.   |
| <b>STEERING</b>               | Hydraulically operated steering<br>wheel with 40° Articulation on either<br>side and turning radius of 7.5 Mtrs<br>(approx) on outer rear wheels.   |
| <b>HYDRAULIC<br/>SYSTEM</b>   | <ul style="list-style-type: none"> <li>• Gear / Infra Vane type Main Pump.<br/>Five spools control valve with built<br/>in Relief Valve.</li> <li>• Suction line has 100 mesh size<br/>Strainer while return line is fitted with<br/>25 micron filter.</li> <li>• Two double acting lift cylinders, one<br/>double acting extension cylinder and<br/>two double acting steering cylinders.</li> </ul> |
| <b>TELESCOPIC<br/>BOOM</b>    | 4 part slotted boom, 2 part hydraulically<br>operated & synchronized and 4th part<br>power extended (20.2 mtrs height)  |
| <b>BOOM LUFFING<br/>Range</b> | - 7° to + 75°   |
| <b>HOIST</b>                  | Winch is driven by hydraulic motor and<br>fitted with rope tensioner. Hoisting is<br>provided through self adjusting hook<br>block employing 4/6 falls of 13 mm dia<br>rope   |
| Hoist Speed                   | 50 Mtrs./Min. (Line Speed)  |

|   |   |
|---|---|
| <b>TYRES</b>  | 11.00 x 20 - 16 PR (8 Nos.)   |
| Wheel Base  | 4150 mm   |
| Wheel Track   | 1825 mm   |
| <b>ELECTRICAL<br/>SYSTEM</b>  | 12v, Negative Earth (110 AH Battery)  |
| <b>SAFETY</b>   | <ul style="list-style-type: none"> <li>• SLI - Safe Load Indicator</li> <li>• Hose Failure Protection</li> <li>• Audio Over hoisting Indication</li> <li>• Safety Brakes on Hoist</li> <li>• Self-Adjusting Hook Block</li> <li>• Front and rear wheel guards</li> </ul>  |
| <b>STANDARD<br/>EQUIPMENT</b>   | <ul style="list-style-type: none"> <li>• Front work lights</li> <li>• Reflectors and rear view mirror</li> <li>• Tool kit</li> <li>• Cabin fan</li> <li>• Wiper motor</li> <li>• Digital Cluster with display indications<br/>for : <ul style="list-style-type: none"> <li>a) Fuel Level</li> <li>b) Low Fuel</li> <li>c) Engine Oil Pressure</li> <li>d) Air Pressure</li> <li>e) Low Air Pressure</li> <li>f) Parking Brake</li> <li>g) Coolant Temperature</li> <li>h) Engine RPM</li> <li>i) Engine Hour Recorder</li> <li>j) Speedo Meter</li> <li>k) Odometer</li> <li>l) Urea Level</li> <li>m) Water in Fuel</li> <li>n) Battery Charging</li> <li>o) Neutral Position Safe Start</li> <li>p) 2W/4WD Drive</li> <li>q) Regeneration</li> <li>r) Fault Detector Codes (P Code)</li> </ul> </li> <li>• Rear view Camera</li> <li>• Front Outriggers</li> <li>• Beacon Rotating Light</li> <li>• Regeneration Switch</li> <li>• Over Hoist hydraulic cutoff</li> </ul> |
| <b>OPTIONAL<br/>EQUIPMENT</b>   | <ul style="list-style-type: none"> <li>• Air Conditioned (AC) cabin</li> <li>• Fire extinguisher</li> <li>• Cabin Front Glass Protector</li> <li>• Helper / Slinger Seat</li> <li>• Front &amp; Side Proximity Sensors</li> </ul>   |
| <br><b>Features</b> | <ul style="list-style-type: none"> <li>• ALSS, SCOS and RAS features for<br/>Safe Crane Operations.</li> <li>• ACE Live (Telematics) : IOT Device for<br/>Monitoring, Diagnosis and Remote<br/>Trouble Shooting.</li> <li>• IOT Controlled SLI.</li> <li>• IOT Controlled AC.</li> </ul>  |
| <b>OPERATING<br/>WEIGHT</b>   | 18040 Kgs.  |

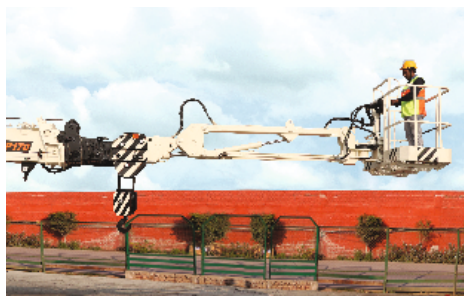
# ACE

## AERIAL PLATFORM

|  |   |
|--|---|
| Access platform / Man Lift Basket is provided with quick coupling connections for easy and fast Installation / Removal |   |
| Length   | 1800 mm (1.8 m)   |
| Width  | 910 mm (0.91 m)   |
| Capacity   | 230 Kgs (Rated at 60%)  |
| Maximum Working Height   | 25 m  |
| Maximum Platform Height  | 23 m  |
| Maximum Horizontal Outreach  | 21.2 m  |
| Jib Angle - Up   | 70°   |
| - Down   | 70°   |
| Jib Articulation Range   | 140° with 2 Mtrs. above & 2 Mtrs. below horizontal                            |
| Platform Rotation  | 180° (90° on either side)<br>Hydraulically Driven through Slew / Rotary Drive |

# NXP170 MAN LIFT CRANE

Jib Articulation



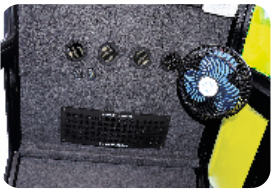
Platform Rotation







- **FRONT OUTRIGGERS**  
Front Outriggers for added safety during high lift / man lift operations.



## AC CABIN

IOT controlled Air Conditioned Cabin for Operator comfort

ULTRA

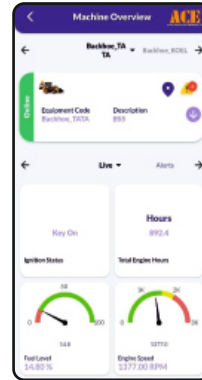
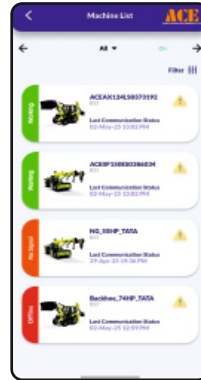


**ACE LIVE : SLI**  
IOT connected and controlled SLI for safe load / operation monitoring and control, providing improved safety and working at sites

ULTRA

**ACE LIVE : TELEMATICS**  
Smart connected machines with IOT Device for Live Monitoring and Diagnosis of various parameters and Remote Trouble Shooting

ULTRA



ULTRA

Advanced Load Sensing System ensures low speed 4WD mode during movement with loads (1000 kgs Plus)



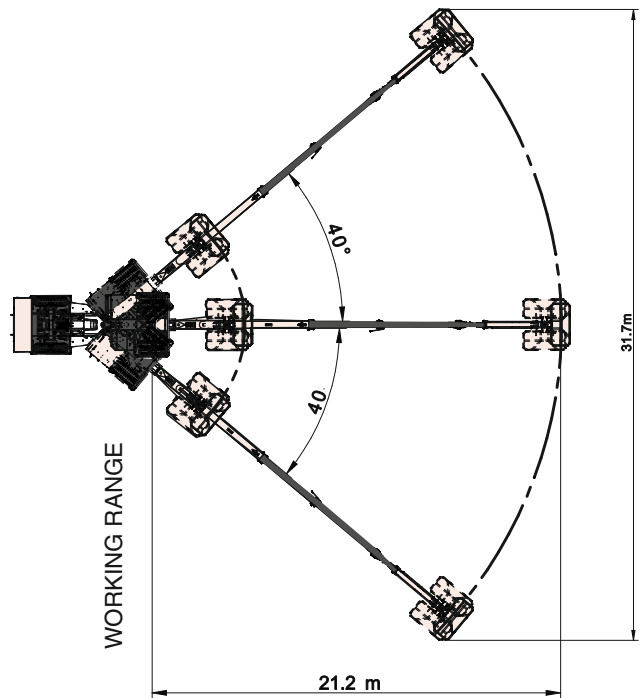
ULTRA

Safe Crane Operation System is a Fail Safe System which ensures that the machine is not overloaded and only safe functions are permitted, minimizing operator fault.



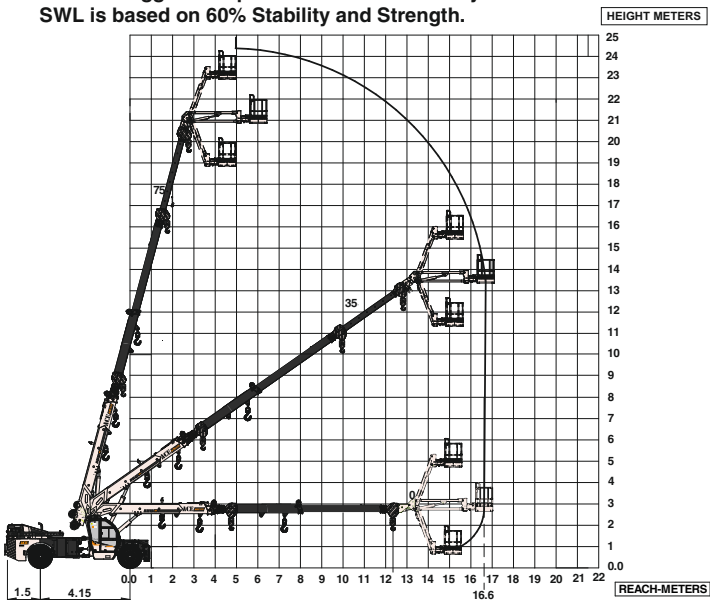
ULTRA

Remote Articulation Stability ensures safe operations during articulation including movement with loads.



## Man Basket Load Chart

- Man Basket Maximum Capacity - 230 Kgs
- Front outriggers are provided for added safety
- SWL is based on 60% Stability and Strength.

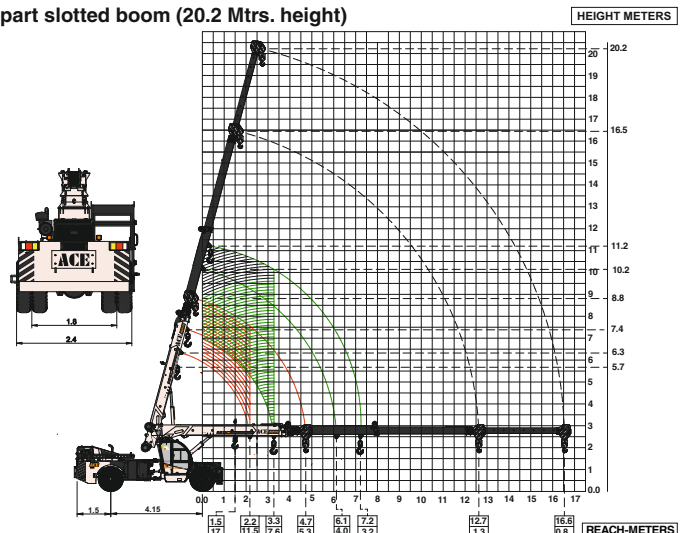


All dimensions are in Meters  $\pm 5\%$

## Pick N Carry Load Chart

- Max. capacity flyjib : 1.25 tonnes
- Max. capacity manual extension : 2.0 tonnes
- SWL is based on IS4573

NXP 170 Model Crane fitted with 4 part slotted boom (20.2 Mtrs. height)



All dimensions are in Meters  $\pm 5\%$



## Mobile Cranes (9-260 Tonnes)



## Tractors



## Harvester Combine



## Forklifts



## Vibratory Rollers



## Backhoe Loader



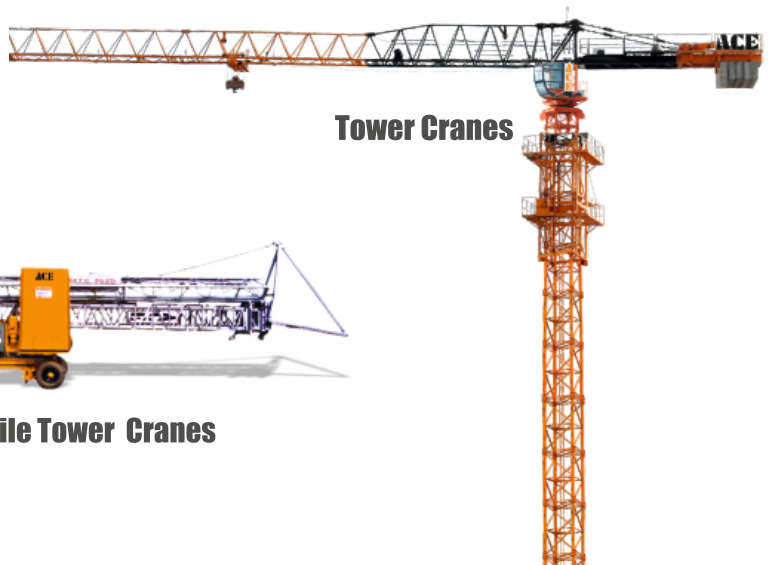
## Motor Grader



## Piling Rigs



## Tower Cranes



## Mobile Tower Cranes

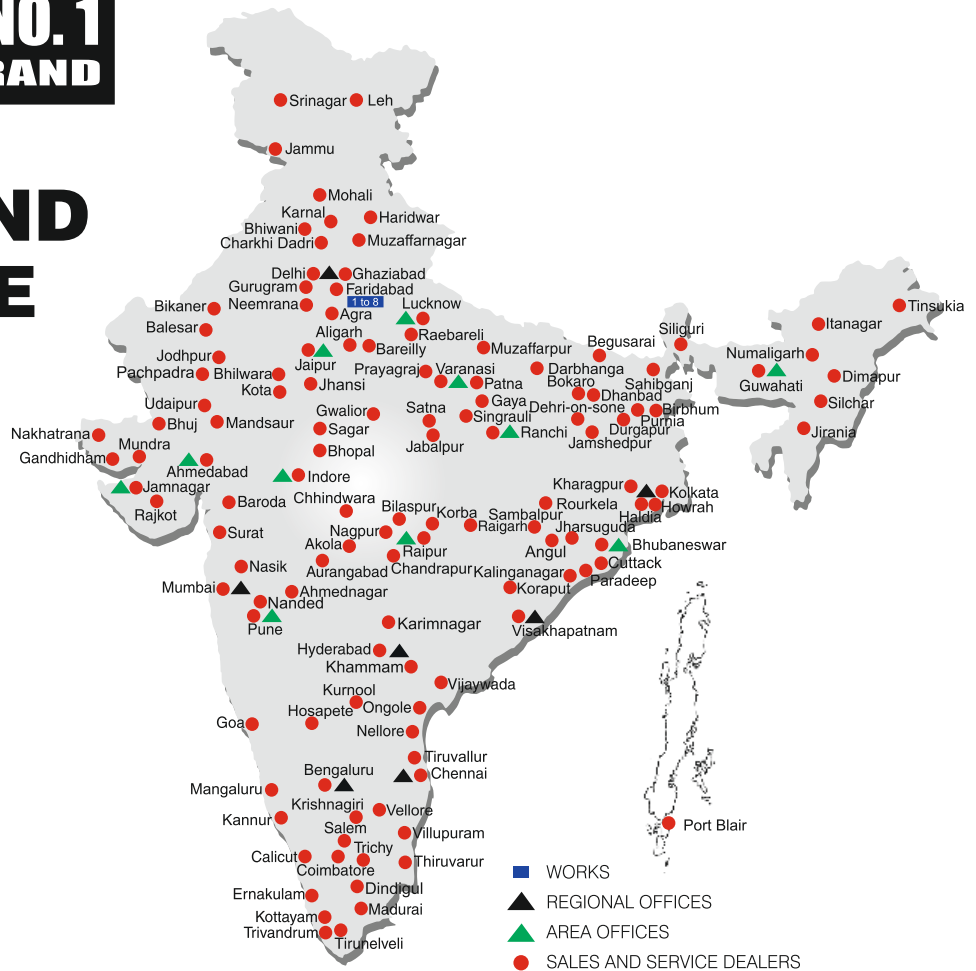


# BUILT TO PERFORM



**RELIABLE AND  
DEPENDABLE  
EFFICIENCY**

## NETWORK



### MARKETING H.Q.

4th Floor, Pinnacle  
Surajkund, NCR-121009  
Ph.: +91-129-4550000  
Fax: +91-129-4550022  
E-mail: marketing@ace-cranes.com

### REGISTERED OFFICE

Dudhola Link Road, Dudhola  
Palwal-121102, Haryana  
Ph.: +91-1275-280111  
Fax: +91-1275-280133  
CIN: L74899HR1995PLC053860

### MUMBAI OFFICE

31, "Kalpataru Court"  
Chembur, Mumbai - 400074  
Ph.: +91-22-25206846, 25207070  
Fax: +91-22-25207071  
E-mail: acemumbai@ace-cranes.com

### KOLKATA OFFICE

84A, A/C Bose Road, Fomra Tower -  
2nd Floor, Kolkata-700014  
Ph.: +91-9038070630  
E-mail: acekolkata@ace-cranes.com

### CHENNAI OFFICE

1st Floor, "Alsa Regency", 165  
Eldams Road, Alwar Pet  
Chennai - 600018  
Ph.: +91-44-24314253  
Fax: +91-44-24314252  
E-mail: acechennai@ace-cranes.com

**HERE TO SERVE YOU.**



**Action Construction Equipment Ltd.**

Follow us on



ACE reserves the right to alter any specifications without prior notice. Dimensions, weights & capacities mentioned herein are variable by  $\pm 5\%$ . Accessories if shown are not part of the Standard Equipment.

