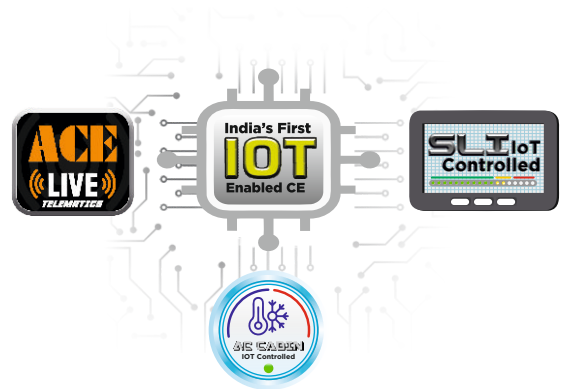


100%
Swadeshi



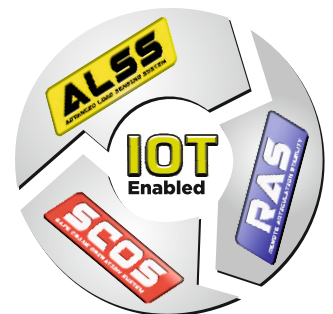
ACE F250

Nextgen Hydraulic Crane Capacity: 25 tonnes

Rough terrain and rugged, 4x4
Articulated NextGen Pick 'n' Carry crane

ACE INDIA'S NO. 1
CRANE BRAND


CEV
STAGE V



Specifications

F-250

LIFTING CAPACITY ENGINE	25 Tonnes Tata (CEV V) Diesel Engine, Model 497, 4 cylinder, Water Cooled, Turbo Charged Engine with Electronic Control Unit (ECU)
Rated Power	101 HP (74 kW) at 2200 RPM
TRANSMISSION	Heavy Duty Synchromesh Gearbox with 12 Forward and 2 reverse speeds. Auxiliary Gear Box with 2WD/4WD selector for High and Low speeds.
Axles	Front axle is rigidly mounted on the chassis. Rear drive axle is mounted with 2 nos. Leaf springs.
Drive	4 Wheel drive (4x4)
Clutch	Heavy duty, single, dry friction type pneumatic assisted hydraulic clutch.
Creep Speed	1.3 KMPH
Top Speed	38 KMPH on even metaled Road (without load)
Gradeability	40 % (unladen)
STEERING	Full power orbitrol with twin hydraulic double acting cylinders and 40° articulation on either side
Turning Radius	8.20 Mtrs. on outer rear wheels.
BRAKES	<ul style="list-style-type: none"> • Dual Circuit Brakes • Fully Pneumatic brakes on front and rear wheels. • Parking brake is pneumatically operated, fail safe type
HYDRAULIC SYSTEM	<ul style="list-style-type: none"> • Gear/Intra Vane type main pump • Five spools control valve with built in Relief Valve (Heavy duty) • Suction line has 100 mesh size strainer while return line is fitted with 25 micron filter. • Two double acting lift cylinders, two double acting steering cylinders and one double acting extension cylinder.
TELESCOPIC BOOM	4 part slotted boom, 2 part hydraulically operated & synchronized and 4th part power extended
HOIST	4 Tonnes Line Pull Winch is driven by hydraulic motor and fitted with rope tensioner. Hoisting is provided through self adjusting hook block employing 6 falls of 13mm dia. Rope.
Hoist Speed	35 Mtrs./Min (Line Speed)
ELECTRICAL SYSTEM	12v, Negative Earth (110 AH Battery)
TYRES	
Front	12.00x24-20 PR (4 NOS.)
Rear	12.00x24-20 PR (4 NOS.)
Wheel Base	4930 mm
Wheel Track	1880 mm

SAFETY	<ul style="list-style-type: none"> • Hose Failure Protection • Audio Over hoisting Indication • Safety Brakes on Hoist • Self-Adjusting Hook Block • Front and rear wheel guards
STANDARD EQUIPMENT	<ul style="list-style-type: none"> • Front work lights • Reflectors and rear view mirror • Tool kit • Cabin fan • Wiper motor • Digital Cluster with display indications for : <ul style="list-style-type: none"> a) Fuel Level b) Low Fuel c) Engine Oil Pressure d) Air Pressure e) Low Air Pressure f) Parking Brake g) Coolant Temperature h) Engine RPM i) Engine Hour Recorder j) Speedo Meter k) Odometer l) Urea Level m) Water in Fuel n) Battery Charging o) Neutral Position Safe Start p) 2W/4WD Drive q) Regeneration r) Fault Detector Codes (P Code) • Rear view Camera • Front Outriggers • Beacon Rotating Light • Regeneration Switch
OPTIONAL EQUIPMENT	<ul style="list-style-type: none"> • Air Conditioned (AC) cabin • SLI - Safe Load Indicator • Fly jib (1.25 Tonnes Max. Capacity) • Over Hoist hydraulic cutoff • Fire extinguisher • Cabin Front Glass Protector • Helper / Slinger Seat • Drag Winch • Front & Side Proximity Sensors • Man Basket Attachment • ALSS, SCOS and RAS features for Safe Crane Operations. • ACE Live (Telematics) : IOT Device for Monitoring, Diagnosis and Remote Trouble Shooting. • IOT Controlled SLI. • IOT Controlled AC.
	
OPERATING WEIGHT	20800 Kgs.

ACE



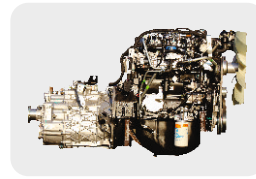
OPTIMIZED KINEMATICS AND LOW C.G.

F 250 crane has been designed for operational safety with low Center of Gravity (C.G.) providing best in class stability



ELECTRONIC CLUSTER

Digital Electronic Cluster with advanced features.



ENGINE

Tata Model 497 (CEV V)
Diesel Engine with nation wide service support and spares availability



AC CABIN

IOT controlled Air Conditioned Cabin for Operator comfort

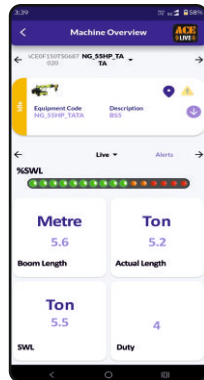
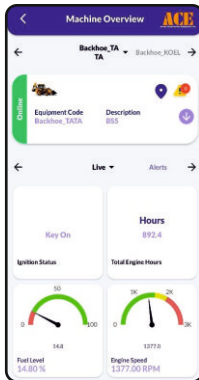
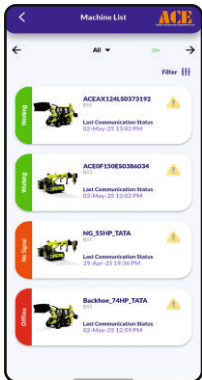
ULTRA

4x4

ACE LIVE : TELEMATICS

Smart connected machines with IOT Device for Live Monitoring and Diagnosis of various parameters and Remote Trouble Shooting

ULTRA



F250



STEERING WHEEL & CONTROLS

Ergonomically placed operator console and instrument cluster ensures ease of operation.

ACE F250 Model Crane fitted with 3 part slotted boom + 1 Manual (20.2 mtrs. height)

- Max. Capacity Fly jib : 1.25 Tonnes
- Max. Capacity manual extension : 2.0 Tonnes



ACE LIVE : SLI

IOT connected and controlled SLI for safe load / operation monitoring and control, providing improved safety and working at sites

ULTRA



ULTRA



ULTRA

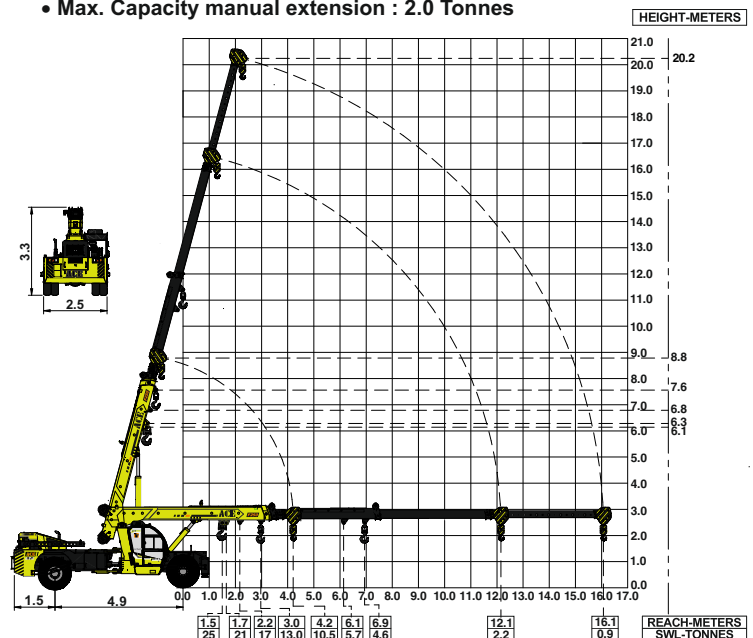
Advanced Load Sensing System ensures low speed 4WD mode during movement with loads (1500 kgs Plus)

Remote Articulation Stability ensures safe operations during articulation including movement with loads.



ULTRA

Safe Crane Operation System is a Fail Safe System which ensures that the machine is not overloaded and only safe functions are permitted, minimizing operator fault.



NOTE - SWL are based on 85% stability & strength.
- Rated loads are on the basis of operation on firm and level surface.
- Full rated lifting capacity available in articulated / steered condition.

ALL DIMENSIONS IN METERS ±5%

BUILT TO PERFORM

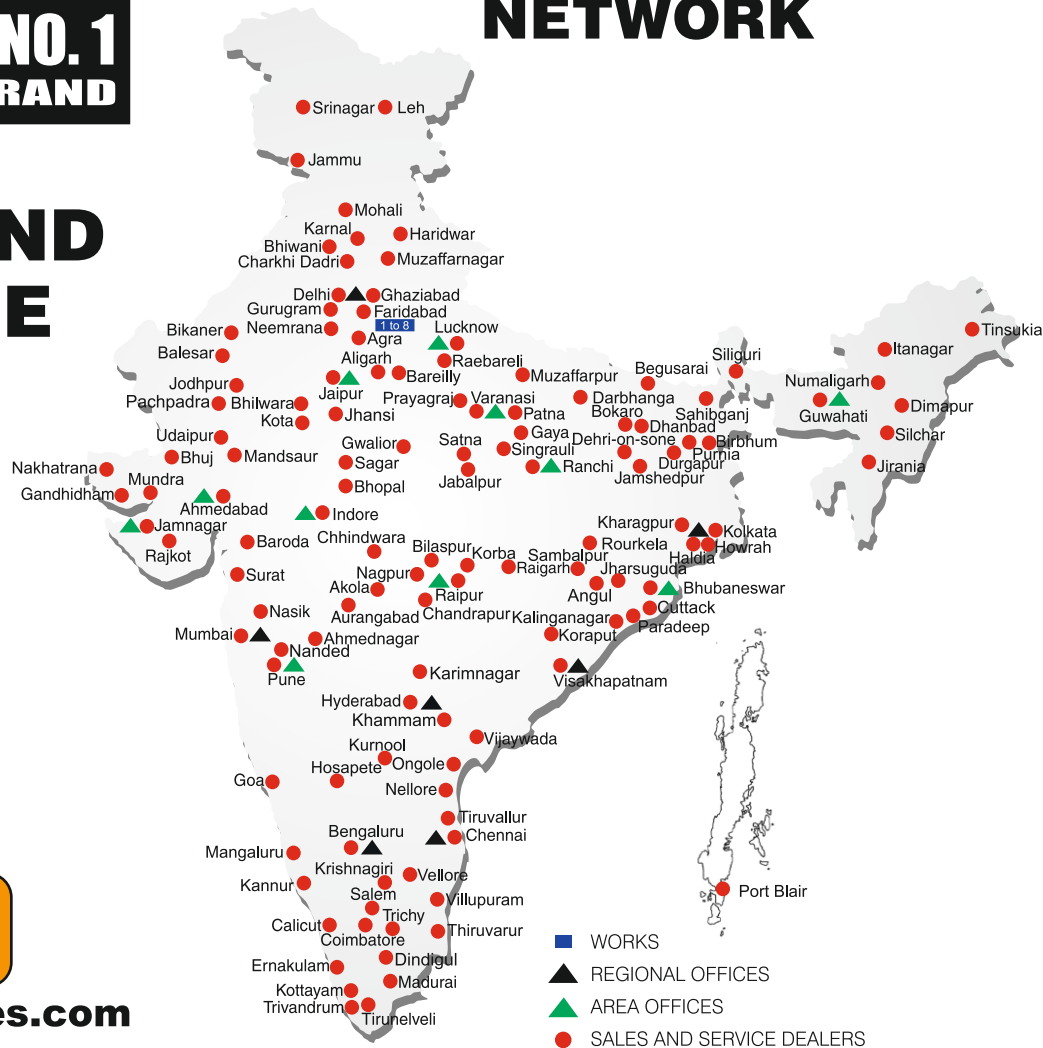


**RELIABLE AND
DEPENDABLE
EFFICIENCY**



www.ace-cranes.com

NETWORK



MARKETING H.Q.

4th Floor, Pinnacle
Surajkund, NCR-121009
Ph. : +91-129-4550000
Fax : +91-129-4550022
E-mail: marketing@ace-cranes.com

REGISTERED OFFICE

Dudhola Link Road, Dudhola
Palwal-121102, Haryana
Ph.: +91-1275-280111
Fax: +91-1275-280133
CIN : L74899HR1995PLC053860

MUMBAI OFFICE

31, "Kalpataru Court"
Chembur, Mumbai - 400074
Ph.: +91-22-25206846, 25207070
Fax: +91-22-25207071
E-mail: acemumbai@ace-cranes.com

KOLKATA OFFICE

84A, AJC Bose Road, Fomra Tower -
2nd Floor, Kolkata-700014
Ph.: +91-9038070630
E-mail: acekolkata@ace-cranes.com

CHENNAI OFFICE

1st Floor, "Alsa Regency", 165
Eldams Road, Alwar Pet
Chennai - 600018
Ph.: +91-44-24314253
Fax: +91-44-24314252
E-mail: acechennai@ace-cranes.com

HERE TO SERVE YOU.



Action Construction Equipment Ltd.

Follow us on



ACE reserves the right to alter any specifications without prior notice. Dimensions, weights & capacities mentioned herein are variable by $\pm 5\%$. Accessories if shown are not part of the Standard Equipment.