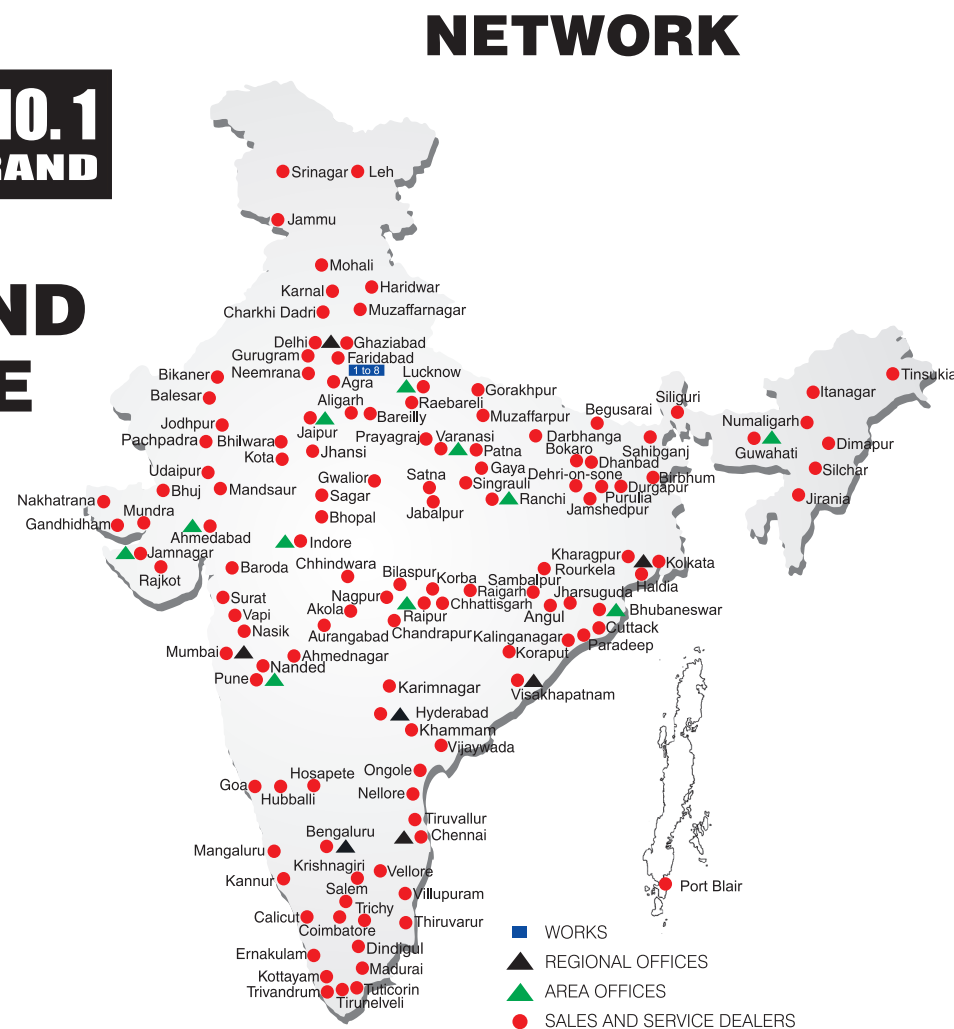


# BUILT TO PERFORM



**ACE** INDIA'S NO. 1  
CRANE BRAND

**RELIABLE AND  
DEPENDABLE  
EFFICIENCY**



**Toll Free Help Line  
1800 1800 004**

[www.ace-cranes.com](http://www.ace-cranes.com)

#### MARKETING H.Q.

4th Floor, Pinnacle  
Surajkund, NCR-121009  
Ph.: +91-129-4550000  
Fax: +91-129-4550022  
E-mail: marketing@ace-cranes.com

#### REGISTERED OFFICE

Dudhola Link Road, Dudhola  
Palwal-121102, Haryana  
Ph.: +91-1275-280111  
Fax: +91-1275-280133  
CIN: L74899HR1995PLC053860

#### MUMBAI OFFICE

31, "Kalpataru Court"  
Chembur, Mumbai - 400074  
Ph.: +91-22-25206846, 25207070  
Fax: +91-22-25207071  
E-mail: acemumbai@ace-cranes.com

#### KOLKATA OFFICE

84A, A/C Bose Road, Fomra Tower -  
2nd Floor, Kolkata-700014  
Ph.: +91-9038070630  
E-mail: acekolkata@ace-cranes.com

#### CHENNAI OFFICE

1st Floor, "Alsa Regency", 165  
Eldams Road, Alwar Pet  
Chennai - 600018  
Ph.: +91-44-24314253  
Fax: +91-44-24314252  
E-mail: acechennai@ace-cranes.com

**HERE TO SERVE YOU.**



**ACE**

**Action Construction Equipment Ltd.**

Follow us on



ACE reserves the right to alter any specifications without prior notice. Dimensions, weights & capacities mentioned herein are variable by ± 5%. Accessories if shown are not part of the Standard Equipment.

F150/11/25

**ACE**  
**F150**

**Nextgen Hydraulic Crane  
Capacity: 15 tonnes**

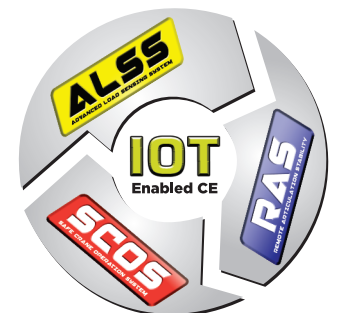
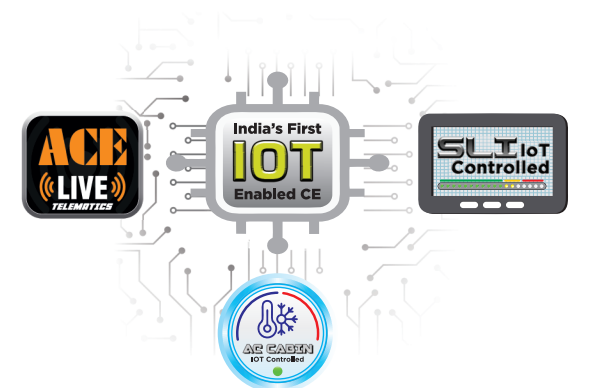
Rough terrain and rugged, 4x4  
Articulated NextGen Pick 'n' Carry crane

**ACE** INDIA'S NO. 1  
CRANE BRAND

**CEV**  
STAGE V



**100%  
Swadeshi**



## Specifications

## F 150

<b>LIFTING CAPACITY</b>	15 Tonnes
<b>ENGINE</b>	Tata (CEV V) Diesel Engine, Model 497, 4 cylinder, Water Cooled, Turbo Charged Engine with Electronic Control Unit (ECU)
Max. Rating	74 HP (54 kW) at 2200 RPM
<b>TRANSMISSION</b>	Heavy Duty Synchromesh Gearbox with 10 Forward and 2 reverse speeds. Auxilliary Gear Box with 2WD/4WD selector for High and Low speeds
Axles	Front axle is rigidly mounted on the chassis and Rear axle is mounted with 2 Nos. leaf Springs.
Drive	4 Wheel drive (4x4)
Clutch	Heavy Duty, single, dry friction type, pneumatic assisted hydraulic clutch.
Top Speed	35 Kmph on even metalled Road (without load)
Creep Speed	1.3 Kmph
Gradeability	40 % (unladen)
<b>BRAKES</b>	Pneumatically operated dual circuit brakes on Front and Rear wheels. Parking brake is pneumatically operated and fail safe type.
<b>STEERING</b>	Hydraulically operated steering wheel with 40° Articulation on either side and turning radius of 7.5 Mtrs (approx) on outer rear wheels.
<b>TELESCOPIC BOOM</b>	4 part slotted boom, 2 part hydraulically operated & synchronized and 4th part power extended (18.8 mtrs height)
<b>HYDRAULIC SYSTEM</b>	<ul style="list-style-type: none"> <li>Gear / Intra Vane type Main Pump. Five spools control valve with built in Relief Valve.</li> <li>Suction line has 100 mesh size Strainer while return line is fitted with 25 micron filter.</li> <li>Two double acting lift cylinders, one double acting extension cylinder and two double acting steering cylinders.</li> </ul>
<b>HOIST</b>	Winch is driven by hydraulic motor and fitted with rope tensioner. Hoisting is provided through self adjusting hook block employing 4/6 falls of 13 mm dia rope
Hoist Speed	50 Mtrs/Min (Line Speed)

<b>ELECTRICAL SYSTEM</b>	12v, Negative Earth (110 AH Battery)
<b>TYRES</b> Wheel Base Wheel Track	11.00 x 20 - 16 PR (8 Nos.) 3900 mm 1825 mm
<b>SAFETY</b>	<ul style="list-style-type: none"> <li>Hose Failure Protection</li> <li>Audio Over hoisting Indication</li> <li>Safety Brakes on Hoist</li> <li>Self-Adjusting Hook Block</li> <li>Front and rear wheel guards</li> </ul>
<b>STANDARD EQUIPMENT</b>	<ul style="list-style-type: none"> <li>Front work lights</li> <li>Reflectors and rear view mirror</li> <li>Tool kit</li> <li>Cabin fan</li> <li>Wiper motor</li> <li>Digital Cluster with display indications for :               <ul style="list-style-type: none"> <li>Fuel Level</li> <li>Low Fuel</li> <li>Engine Oil Pressure</li> <li>Air Pressure</li> <li>Low Air Pressure</li> <li>Parking Brake</li> <li>Coolant Temperature</li> <li>Engine RPM</li> <li>Engine Hour Recorder</li> <li>Speedo Meter</li> <li>Odometer</li> <li>Urea Level</li> <li>Water in Fuel</li> <li>Battery Charging</li> <li>Neutral Position Safe Start</li> <li>2W/4WD Drive</li> <li>Regeneration</li> <li>Fault Detector Codes (P Code)</li> </ul> </li> <li>Rear view Camera</li> <li>Front Outriggers</li> <li>Beacon Rotating Light</li> <li>Regeneration Switch</li> </ul>
<b>ENGINE OPTIONS</b>	Tata 55 HP and 101 HP
<b>OPTIONAL EQUIPMENT</b>	<ul style="list-style-type: none"> <li>Air Conditioned (AC) cabin</li> <li>SLI - Safe Load Indicator</li> <li>Fly jib (1.25 Tonnes Max. Capacity)</li> <li>Over Hoist hydraulic cutoff</li> <li>Fire extinguisher</li> <li>Cabin Front Glass Protector</li> <li>Helper / Slinger Seat</li> <li>Drag Winch</li> <li>Front &amp; Side Proximity Sensors</li> <li>Man Basket Attachment</li> <li>ALSS, SCOS and RAS features for Safe Crane Operations.</li> <li>ACE Live (Telematics) : IOT Device for Monitoring, Diagnosis and Remote Trouble Shooting.</li> <li>IOT Controlled SLI.</li> <li>IOT Controlled AC.</li> </ul>
<b>OPERATING WEIGHT</b>	15900 Kgs.

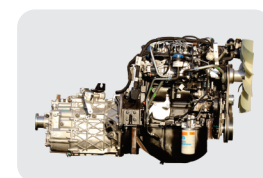
**ULTRA**  
Features

# F150

# ACE



**ACE LIVE : TELEMATICS**  
Smart connected machines with IOT Device for Live Monitoring and Diagnosis of various parameters and Remote Trouble Shooting



**ENGINE**  
Tata Model 497 (CEV V) Diesel Engine with nation wide service support and spares availability



**OPTIMIZED KINEMATICS AND LOW C.G.**  
F 150 crane has been designed for operational safety with low Center of Gravity (C.G.) providing best in class stability



**STEERING WHEEL & CONTROLS**  
Ergonomically placed operator console and instrument cluster ensures ease of operation.

**ALSS**  
ADVANCED LOAD SENSING SYSTEM  
ULTRA

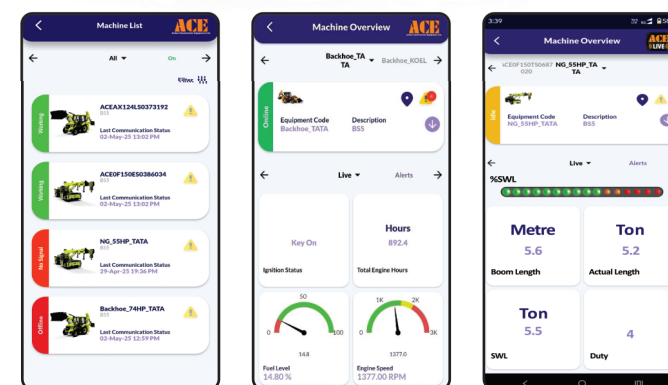
Advanced Load Sensing System ensures low speed 4WD mode during movement with loads (1000 kgs Plus)

**SCOS**  
SAFE CRANE OPERATION SYSTEM  
ULTRA

Safe Crane Operation System is a Fail Safe System which ensures that the machine is not overloaded and only safe functions are permitted, minimizing operator fault.

**RAS**  
REMOTE ARTICULATION STABILITY  
ULTRA

Remote Articulation Stability ensures safe operations during articulation including movement with loads.



**ACE LIVE**  
TELEMATICS

**ACE LIVE : SLI**  
IOT connected and controlled SLI for safe load / operation monitoring and control, providing improved safety and working at sites



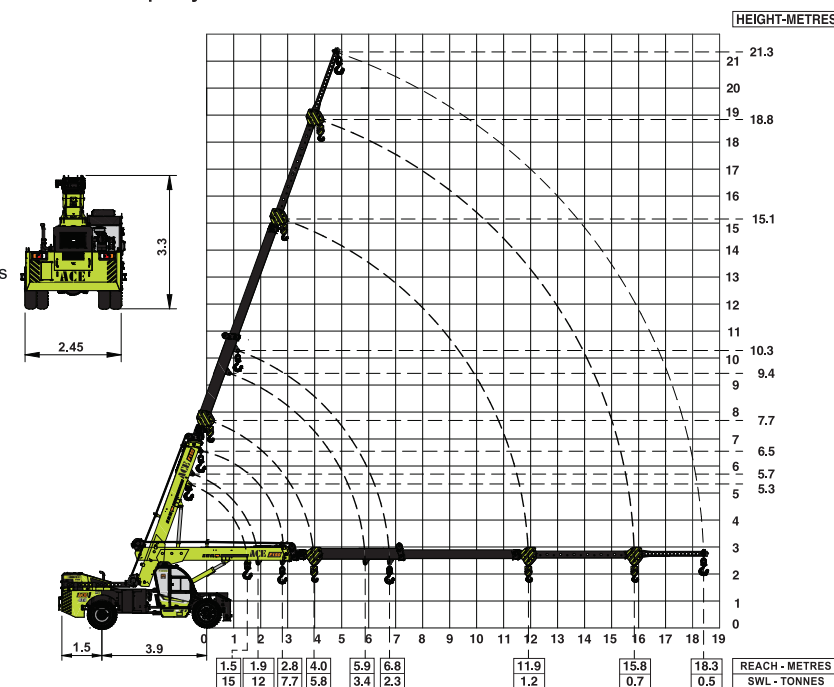
**AC CABIN**  
IOT controlled Air Conditioned Cabin for Operator comfort



**ELECTRONIC CLUSTER**  
Digital Electronic Cluster with advanced features.

### F150 Crane with 4 part boom + Flyjib

- Max. Capacity Fly jib : 1.25 Tonnes
- Max. Capacity manual extension : 2.0 Tonnes



NOTE - SWL are based on 85% stability & strength.  
- Rated loads are on the basis of operation on firm and level surface.  
- Full rated lifting capacity available in articulated / steered condition.

ALL DIMENSIONS IN METERS ±5%.