



# ACE TM 250

## Truck Crane

Rugged and reliable  
25T capacity  
6x4 Drive Truck Crane

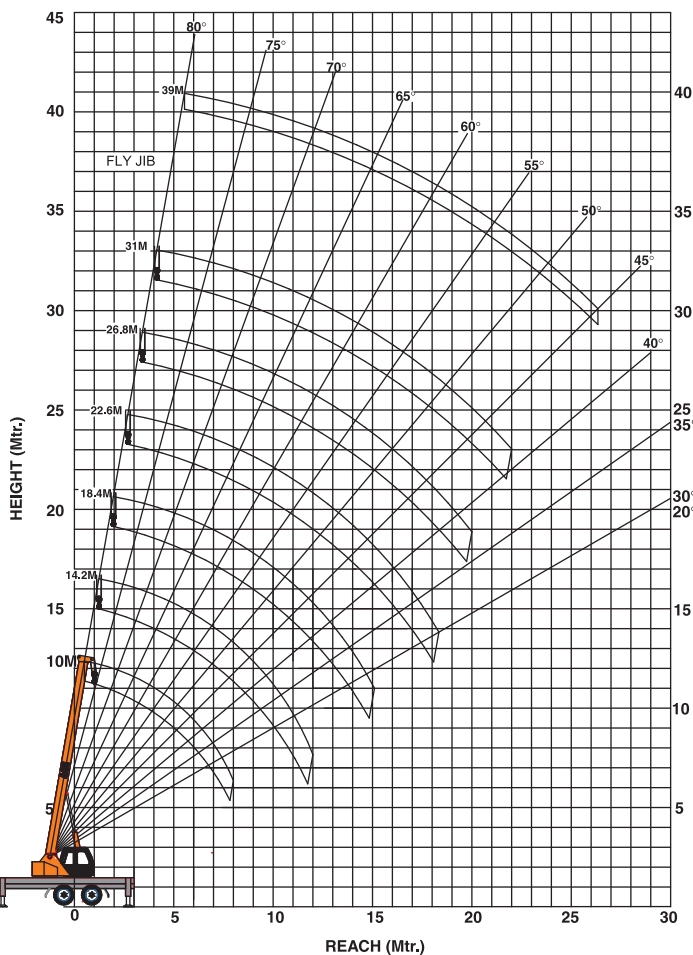


# ACE

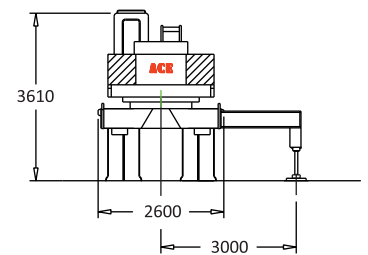
## TM 250 25 Tons



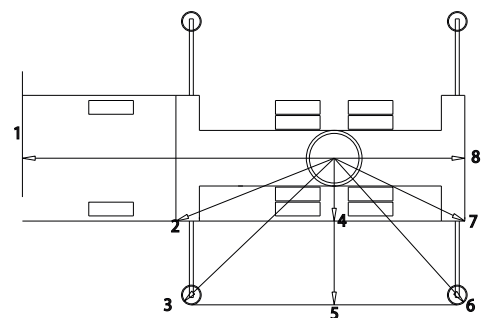
### Lifting dimensions



### Dimensions



Jib Position	Deduction
X	Meter
1	6.65
2	3.38
3	4.46
4	1.30
5	3.22
6	4.20
7	3.18
8	2.90





## Specifications

**TM 250**

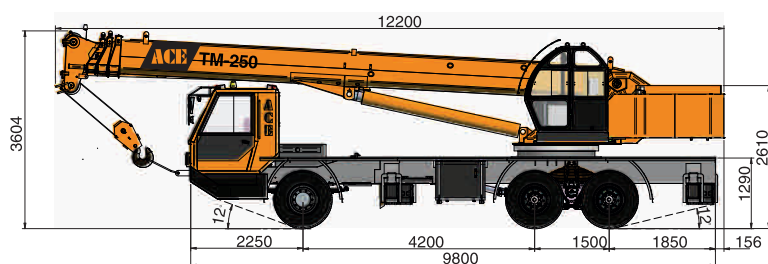
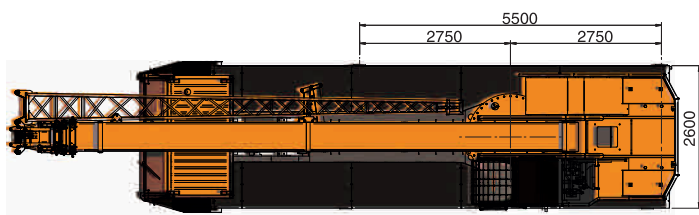
<b>Crane Chassis</b>	<p>Torsion proof chassis fabricated from high tensile steel plates. Outrigger boxes are integrated with the chassis.</p> <p>Drive is 6x4 (4 wheel drive and 2 wheel steer).</p> <p>Full width driver cabin is provided with driver and co-driver seating arrangements</p>	<b>Hoist System</b>	Hoist winch is provided with piston type hydraulic motor driving grooved hoist barrel via reduction gear unit. The system is fitted with counter balance valve to control the speed of lowering
<b>Engine</b>	Six cylinder Water cooled diesel engine developing 180 bhp@ 2400 rpm	<b>Hook Block</b>	4 sheaves block is provided
<b>Clutch</b>	Dry, Single Plate (380mm), hydraulically actuated diaphragm type.	<b>Hoist Rope</b>	16 mm Diameter
<b>Transmission</b>	Six Speed Synchromesh Gear box.	<b>Capacities</b>	
<b>Top Speed</b>	60 Kmph.	Hydraulic Tank	400 ltrs.
<b>Brakes</b>	Air pressurized, diaphragm operated with dual Line arrangement. Flick Valves operated pneumatic hand brake on rear wheels only.	Fuel Tank	335 ltrs.
<b>Tyres Size</b>	10.00 X 20-16 PLY Rating (10+1)	<b>Operator's Cabin (Crane)</b>	Cabin with maximum all round vision is fitted with lockable door. All controls for crane motions & electrical controls are provided in the cabin. Cabin light & fan is also fitted.
<b>Outriggers</b>	Four hydraulically operated outriggers with vertical hydraulic jacks fitted with lock valves. Outrigger blocks are removable & stowable. One vertical jack also provide beneath driver cabin.	<b>Safety Equipment</b>	<ul style="list-style-type: none"> <li>• Safe load indicator which provides radius &amp; hook indication with visual indication of approach to overload &amp; audible indication of overload condition.</li> <li>• Over load and over hoist cut off.</li> <li>• Pressure relief in main circuit.</li> <li>• Pilot operated check valve provided in all the cylinders.</li> </ul>
<b>Hydraulic System</b>	Gear type hydraulic pump driven by Transmission PTO.	<b>Performance Data</b>	
<b>Super Structure</b>	Fabricated with high tensile steel plates and is capable of unlimited slewing in either direction. Super structure is mounted on a sealed, internal teeth slewing ring.	<ul style="list-style-type: none"> <li>• Derrick Angle -2° to 80°</li> <li>• Derricking time 50-60 secs</li> <li>• Telescoping time 80-90 secs</li> <li>• Slew 0-2 RPM</li> <li>• Hoist Main: Single line speed 90 m/min.</li> <li>• Outriggers <ul style="list-style-type: none"> <li>Out 12 secs</li> <li>In 10 secs</li> <li>Down 17 secs</li> <li>UP 12 secs</li> </ul> </li> </ul>	
<b>Boom Derricking</b>	Double acting hydraulic cylinder with counter balance safety valve.	<b>Axle Loads</b>	<p>Front Axle 6800 kgs</p> <p>Rear Axle 20900 kgs</p> <p>Total weight 27700 kgs</p>
<b>Slewing</b>	Piston type hydraulic motor drives a pinion through reduction gear unit. Double counter balance valve is provided for smooth control and operations.	<b>Optional Equipment</b>	Side folding lattice Jib - 8 mtrs.
<b>Telescopic Boom</b>	Double acting hydraulic cylinder is provided for boom telescoping. Four part boom is fabricated from high tensile steel and is extendable from 10 mtrs to 31 mtrs.		



## Rated Lifting Capacity ( in Kgs. )

**TM 250**

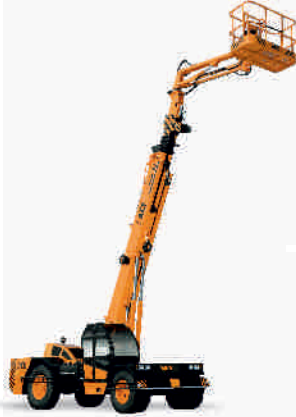
Radius	360° BLOCKED					
	Jib Closed 10.0 M	Jib Extended 10.0-14.2M	Jib Extended 14.2-18.4M	Jib Extended 18.4-22.6M	Jib Extended 22.6-26.8M	Jib Extended 26.8-31.0M
Meter	Kgs.	Kgs.	Kgs.	Kgs.	Kgs.	Kgs.
3.0	25000	15000	13500			
3.5	23000	15000	13500			
4.0	20000	15000	13500	10500		
4.5	17000	14000	13000	10500		
5.0	16000	14000	13000	10000	8000	
5.5	14000	13000	12500	10000	8000	
6.0	12200	12000	12000	9500	7500	6000
6.5	11000	11200	11000	9000	7500	6000
7.0	9000	10000	10000	8000	7200	6000
8.0	7400	8000	8200	7500	6900	5600
9.0		6500	6200	6500	6200	5200
10.0		5100	5200	5300	5000	4700
11.0		4200	4200	4200	4200	4200
12.0		3500	3500	3300	3300	3300
14.0		2500	2500	2500	2400	2200
16.0				1900	1800	1800
18.0				1360	1360	1250
20.0					1000	1000
22.0						650



Boom Elevation	Main Boom + Jib (31m + 8m)
80°	3000
78°	2800
76°	2700
74°	2600
72°	2500
70°	2300
68°	1900
66°	1550
64°	1250
62°	950
60°	750
58°	550
56°	400



**Mobile Cranes (3-80 Tonnes)**



**Crawler Cranes**

**Tractors**



**Harvester Combine**



**Forklifts**



**Vibratory Rollers**



**Backhoe Loader**



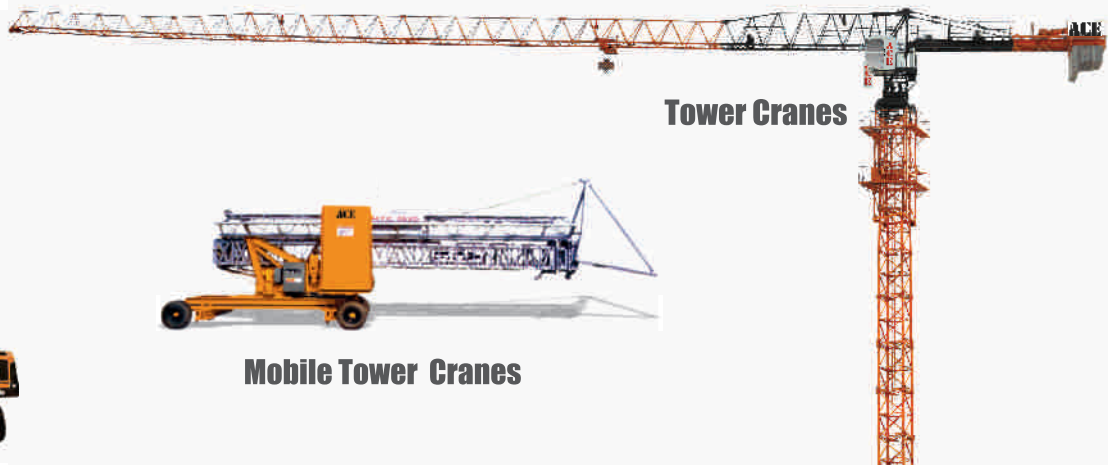
**Motor Grader**



**Piling Rigs**



**Tower Cranes**



**Mobile Tower Cranes**



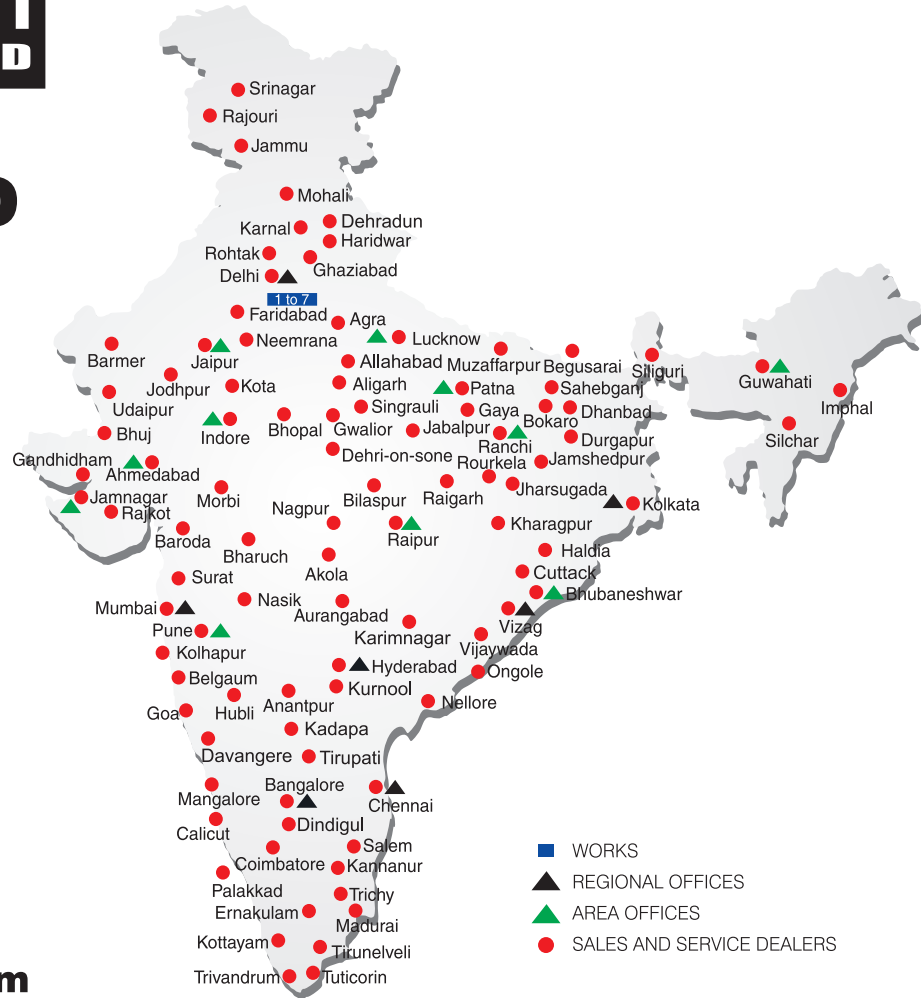
# BUILT TO PERFORM



# ACE

## INDIA'S NO. 1 CRANE BRAND

## RELIABLE AND DEPENDABLE EFFICIENCY



**Toll Free Help Line**  
**1800 1800 004**

[www.ace-cranes.com](http://www.ace-cranes.com)

### MARKETING H.Q.

4th Floor, Pinnacle  
Surajkund, NCR-121009  
Ph. : +91-129-4550000  
Fax : +91-129-4550022  
E-mail: [marketing@ace-cranes.com](mailto:marketing@ace-cranes.com)

### REGISTERED OFFICE

Dudhola Link Road, Dudhola  
Palwal-121102, Haryana  
Ph.: +91-1275-280111  
Fax: +91-1275-280133  
CIN : L74899HR1995PLC053860

### MUMBAI OFFICE

31, "Kalpataru Court"  
Chembur, Mumbai - 400074  
Ph.: +91-22-25206846, 25207070  
Fax: +91-22-25207071  
E-mail: [acemumbai@ace-cranes.com](mailto:acemumbai@ace-cranes.com)

### KOLKATA OFFICE

"Forma Towers" 84-A, Second Floor  
AJC Bose Road, Kolkata - 700014  
Ph.: +91-9038070630  
E-mail: [acekolkata@ace-cranes.com](mailto:acekolkata@ace-cranes.com)

### CHENNAI OFFICE

1st Floor, "Alsa Regency", 165  
Eldams Road, Alwar Pet  
Chennai - 600018  
Ph.: +91-44-24314253  
Fax: +91-44-24314252  
E-mail: [acechennai@ace-cranes.com](mailto:acechennai@ace-cranes.com)

## HERE TO SERVE YOU.

### SPARE PARTS & SERVICE

ACE has all India Sales and Service network operating out of all the major cities. These outlets are fully equipped to provide genuine spare parts and services by company trained engineers. These outlets are further supported by company officials based at Delhi, Mumbai, Chennai, Kolkata, Ahmedabad, Surat, Pune, Jaipur, Chandigarh, Ranchi, Raipur, Indore, Bhubaneswar, Lucknow, Jamnagar, Hyderabad, Bangalore, Guwahati, Patna, Vizag & Kochi.

# ACE

## Action Construction Equipment Ltd.

Contact:



ACE reserves the right to alter any specifications without prior notice. Dimensions, weights & capacities mentioned herein are variable by  $\pm 5\%$ . Accessories if shown are not part of the Standard Equipment.