

ACE

NX 360° 15

NextGen Multi Activity Crane

360° Full Slew and Pick n Carry,
Rough Terrain Articulated Crane

ACE INDIA'S NO. 1
CRANE BRAND



Specifications

NX 360° 15

MAX LIFTING CAPACITY ENGINE	15 Tonnes	SAFETY	<ul style="list-style-type: none"> Safe load indicator with cutoff Hose failure protection Audio over hoisting Indication with cut off Safety brakes on hoist Self-adjusting hook block Rear wheel guards
Rated Power	74 HP (55 kw) at 2200 RPM	OPTIONAL EQUIPMENT	<ul style="list-style-type: none"> Flyjib (Max Capacity : 1.25 Tonnes) Spark arrestor Fire Extinguisher Front and side Proximity Sensors Cabin front glass protector
TRANSMISSION	Heavy duty, synchromesh with 10 forward and 2 reverse speeds and Hi-low drive selector for creep speed	BOOM DERRICKING	Two double acting hydraulic cylinders with counter balance safety valve
Axles	Front axle is rigidly mounted on the chassis. Rear drive axle is mounted with 2 nos. Leaf springs.	BOOM LUFFING Range	-2° to + 64°
Drive	4 x 2	TELESCOPIC BOOM	<ul style="list-style-type: none"> 4 section boom with 2 sections hydraulically operated & synchronized and 4th section power extended Double acting hydraulic cylinder with counter balance safety valve is provided for boom telescoping
Clutch	Heavy duty, single, dry friction type hydraulic clutch.	HOIST	Winch is driven by hydraulic motor and fitted with rope tensioner. Hoisting is provided through self adjusting hook block employing 6 falls of 13mm dia. Rope.
Top Speed	40 KMPH on even metaled Road (without load)	Hoist Speed	50 Mtrs./Min (Line Speed)
Gradeability	40 % (unladen)	ELECTRICAL SYSTEM	12v, Negative earth.
STEERING	Full power orbitrol with twin hydraulic double acting cylinders and 40° articulation on either side	STANDARD EQUIPMENT	<ul style="list-style-type: none"> ROPS fully enclosed wide view cabin Front work lights Reflectors and rear view mirror Tool kit Cabin fan Wiper motor Instrument Cluster :- <ol style="list-style-type: none"> Fuel level gauge Air pressure gauge Oil pressure gauge Coolant temp Engine RPM Speedometer Odo meter Engine Hour Recorder Fault Detector Codes (P-Codes) Rear view camera Front Outriggers Beacon Rotating Light
Turning Radius	7.4 Mtrs. on outer rear wheels.	OPERATING WEIGHT	Total Weight 18300 Kgs.
BRAKES	<ul style="list-style-type: none"> Dual Circuit Brakes Fully Pneumatic brakes on front and rear wheels. Parking brake is pneumatically operated, fail safe type 		
HYDRAULIC SYSTEM	<ul style="list-style-type: none"> Gear type tandem pump Four spools for crane operation. Seven spools for outrigger operation. Suction line has 100 mesh size strainer while return line is fitted with 25 micron full flow filter. 		
SUPER STRUCTURE	Super structure is capable of continuous slewing in either direction and mounted with sealed slew bearing.		
OUTRIGGERS			
Front outriggers	Hydraulically operated telescopic outrigger beams with vertical hydraulic jacks fitted with safety lock valves.		
Rear outriggers	Hydraulically operated swing and telescopic outrigger beams with vertical hydraulic jacks fitted with safety lock valves.		
SLEWING	Hydraulic motor fitted with counter balance valve providing 360° continuous slew		
TYRES			
Front	11.00x20-16 PR (4 NOS.)		
Rear	14.00x25-20 PR (2 NOS.)		

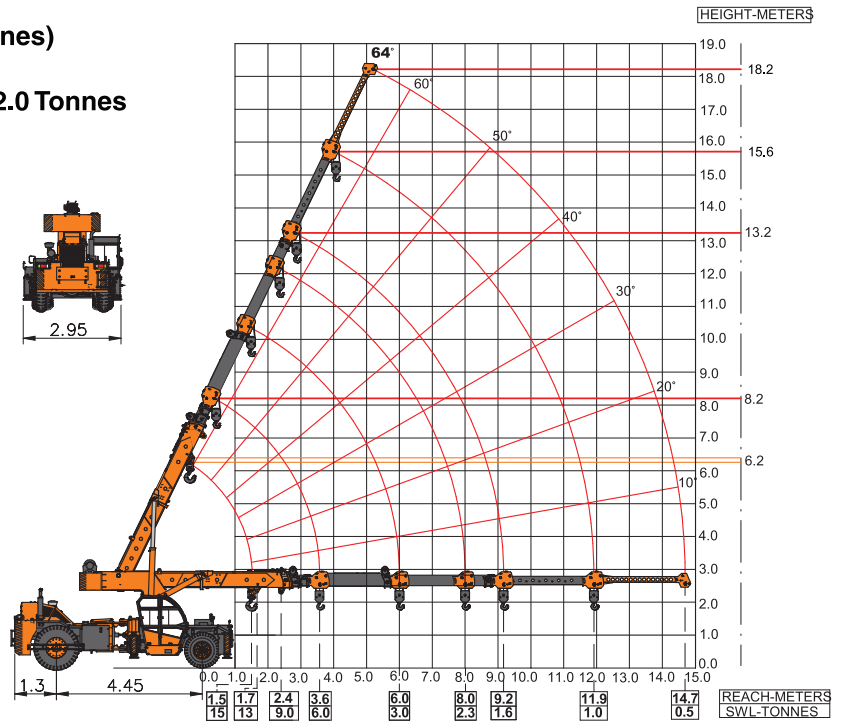




Load Chart : Pick 'N' Carry Duty (Tonnes)

- Max. Capacity Fly Jib : 1.25 Tonnes
- Max. Capacity Manual Extension : 2.0 Tonnes

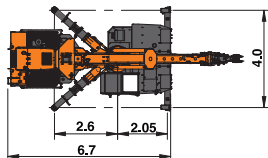
MULTI ACTIVITY CRANE



Load Chart : Slew Duty (Kgs)

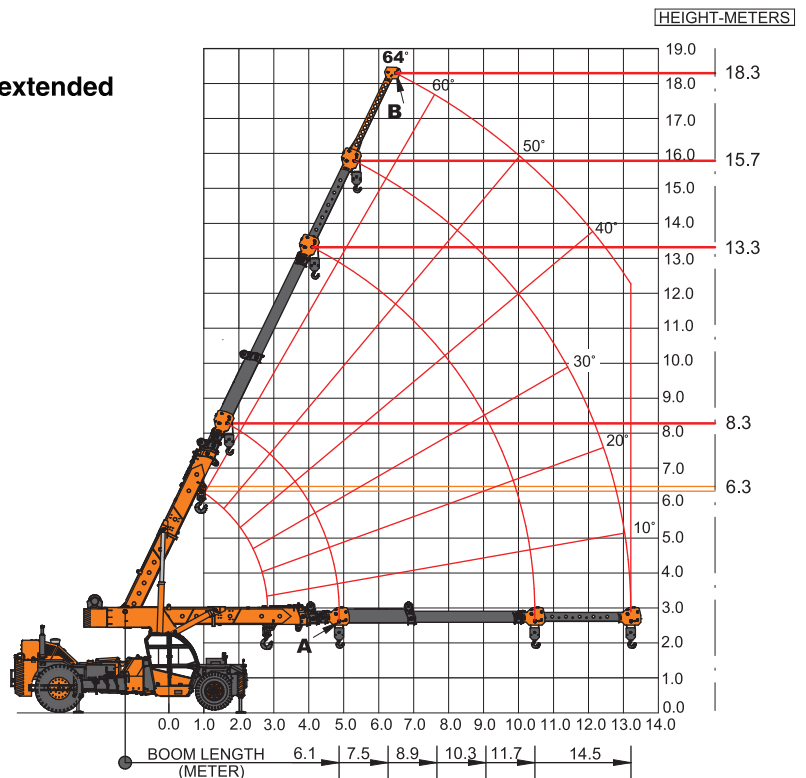
- Outriggers : Fully swung out and fully extended
- Slewing Range : 360° Continuous

SLEW RADIUS	BOOM LENGTH IN METERS							FLY JIB BOOM FULLY EXTENDED
	HOOK BLOCK (A)					MANUAL EXT. OPEN		
	MANUAL EXT. CLOSED							
(M)	6.1	7.5	8.9	10.3	11.7	14.5	17.3	
2.5	15000	9000						
2.8	13500	9000						
3.0	11500	9000						
4.0	9500	9000	9000					
5.0		6000	5900	5800				
6.0		4800	4400	4400	4200	2000		
7.0			3500	3200	3200	1800	1250	
8.0				2900	2900	1600	1250	
9.0				2200	2000	1500	1000	
10.0					1700	1200	900	
11.0						1000	750	
12.0						900	750	
13.0						800	600	
14.0							600	
15.0							500	
16.0							500	



NOTE:

1. Lifting capacities for supported operation only on firm level ground.
2. SWL are based on 85% stability as per IS: 4573.
3. Lifting capacity = Actual load + Chain/Slings.

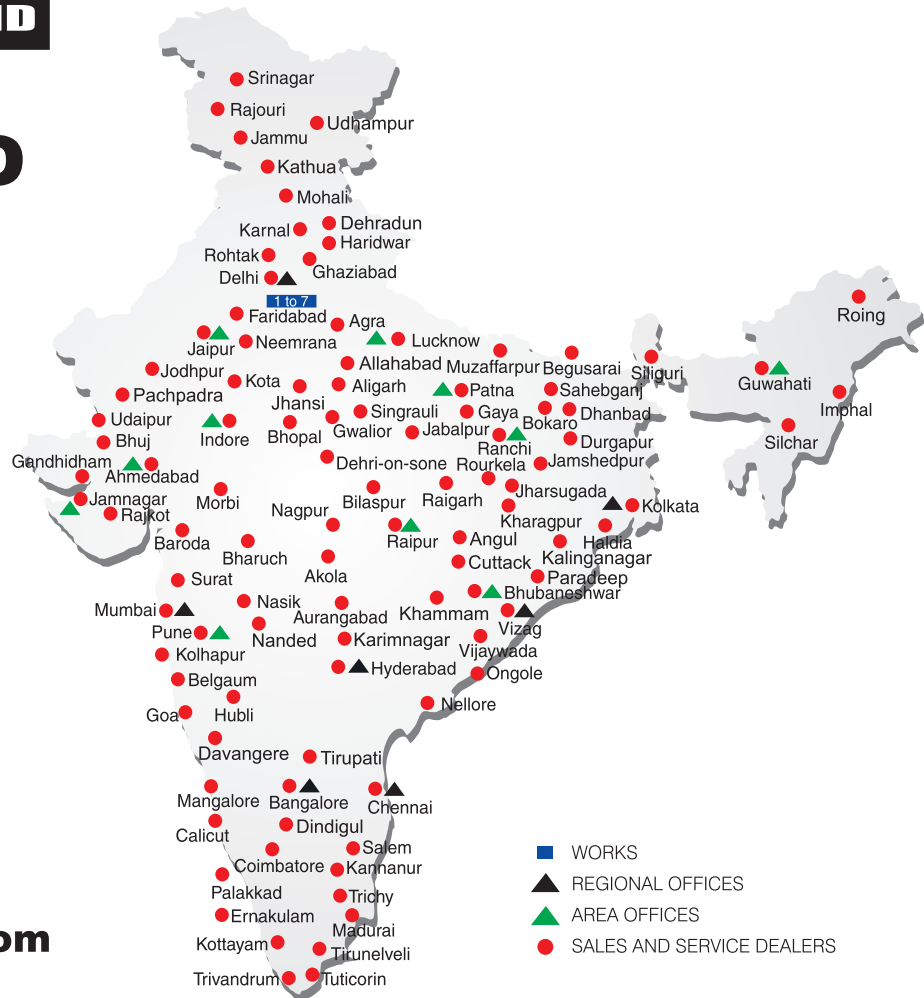


BUILT TO PERFORM



RELIABLE AND DEPENDABLE EFFICIENCY

NETWORK



Toll Free Help Line
1800 1800 004

www.ace-cranes.com

MARKETING H.Q.

4th Floor, Pinnacle
 Surajkund, NCR-121009
 Ph.: +91-129-4550000
 Fax: +91-129-4550022
 E-mail: marketing@ace-cranes.com

REGISTERED OFFICE

Dudhola Link Road, Dudhola
 Palwal-121102, Haryana
 Ph.: +91-1275-280111
 Fax: +91-1275-280133
 CIN: L74899HR1995PLC053860

MUMBAI OFFICE

31, "Kalpataru Court"
 Chembur, Mumbai - 400074
 Ph.: +91-22-25206846, 25207070
 Fax: +91-22-25207071
 E-mail: acemumbai@ace-cranes.com

KOLKATA OFFICE

"Forma Towers" 84-A, Second Floor
 A/C Bose Road, Kolkata - 700014
 Ph.: +91-9038070630
 E-mail: acekolkata@ace-cranes.com

CHENNAI OFFICE

1st Floor, "Alsa Regency", 165
 Eldams Road, Alwar Pet
 Chennai - 600018
 Ph.: +91-44-24314253
 Fax: +91-44-24314252
 E-mail: acechennai@ace-cranes.com

HERE TO SERVE YOU.

SPARE PARTS & SERVICE

ACE has all India Sales and Service network operating out of all the major cities. These outlets are fully equipped to provide genuine spare parts and services by company trained engineers. These outlets are further supported by company officials based at Delhi, Mumbai, Chennai, Kolkata, Ahmedabad, Surat, Pune, Jaipur, Chandigarh, Ranchi, Raipur, Indore, Bhubaneswar, Lucknow, Jamnagar, Hyderabad, Bangalore, Guwahati, Patna, Vizag & Kochi.



Action Construction Equipment Ltd.

Contact:



ACE reserves the right to alter any specifications without prior notice. Dimensions, weights & capacities mentioned herein are variable by $\pm 5\%$. Accessories if shown are not part of the Standard Equipment.

NX360-15/12/23