

100%
Swadeshi

ACE F250

Nextgen Hydraulic Crane Capacity : 25 tonnes

Rough terrain and rugged, 4x4
articulated NextGen pick 'n' move crane

ACE INDIA'S NO.1
CRANE BRAND

- CEV stage IV engine
- Heavy duty drive line
- Improved kinematics with low center of gravity
- Slotted boom
- Self adjusting hook block
- Fail safe air brakes
- Better creep speed



Specifications

F-250

LIFTING CAPACITY	25 Tonnes
ENGINE	Volvo Eicher (CEV Stage IV) Diesel Engine Model E483 CRDi, 4 cylinder, Water Cooled, Turbo Charged Engine with Electronic Control Unit (ECU)
Rated Power	101 HP at 2200 RPM
TRANSMISSION	Heavy Duty Synchromesh with 10 Forward and 2 reverse speeds. Auxiliary Gear Box with 2WD/4WD selector.
Axles	Front axle is rigidly mounted on the chassis. Rear drive axle is mounted with 2 nos. Leaf springs.
Drive	4 Wheel drive.
Clutch	Heavy duty, single, dry friction type hydraulic clutch.
Creep Speed	1.3 KMPH
Top Speed	37 KMPH on even metaled Road (without load)
Gradeability	40 % (unladen)
STEERING	Full power orbitrol with twin hydraulic double acting cylinders and 40° articulation on either side
Turning Radius	8.20 Mtrs. on outer rear wheels.
BRAKES	<ul style="list-style-type: none"> • Dual Circuit Brakes • Fully Pneumatic brakes on front and rear wheels. • Parking brake is pneumatically operated, fail safe type
HYDRAULIC SYSTEM	<ul style="list-style-type: none"> • Gear/Intra Vane type main pump • Five spools control valve with built in Relief Valve (Heavy duty) • Suction line has 100 mesh size strainer while return line is fitted with 25 micron filter. • Two double acting lift cylinders, two double acting steering cylinders and one double acting extension cylinder.
TELESCOPIC BOOM	4 part slotted boom, 2 part hydraulically operated & synchronized and 4th part power extended

HOIST	3.9 Tonnes Line Pull Winch is driven by hydraulic motor and fitted with rope tensioner. Hoisting is provided through self adjusting hook block employing 6 falls of 13mm dia. Rope.
Hoist Speed	35 Mtrs./Min (Line Speed)
ELECTRICAL SYSTEM	12v, Negative Earth (100 AH Battery)
TYRES	
Front	12.00x24-18 PR (4 NOS.)
Rear	12.00x24-18 PR (4 NOS.)
Wheel Base	4930 mm
Wheel Track	1880 mm
SAFETY	<ul style="list-style-type: none"> • Hose failure protection • Audio over hoisting Indication • Safety brakes on hoist • Self-adjusting hook block • Front and rear wheel guards
STANDARD EQUIPMENT	<ul style="list-style-type: none"> • ROPS fully enclosed wide view cabin • Front work lights • Reflectors and rear view mirror • Tool kit • Cabin fan • Wiper motor • Instrument Cluster :- <ol style="list-style-type: none"> a) Fuel level gauge b) Air pressure gauge c) Oil pressure gauge d) Coolant temp e) Engine RPM f) Speedometer g) Odo meter h) Engine Hour Recorder i) Fault Detector Codes (P-Codes) • Rear view camera • Front Outriggers • Beacon Rotating Light
OPTIONAL EQUIPMENT	<ul style="list-style-type: none"> • Fly jib (1.25 Tonnes Max. Capacity) • Safe load indicator/ LMI • Over Hoist hydraulic cutoff • Fire extinguisher • Cabin Front Glass Protector • Helper / Slinger Seat • Drag Winch • Spark arrestor • 3 part slotted boom (11.5 mtrs height) • Front & Side Proximity Sensor • Man Basket Attachment • Fork Attachment • Ram Attachment
OPERATING WEIGHT	20560 Kgs.

4x4



ENGINE
Volvo Eicher (CEV Stage IV)
CRDi Diesel Engine Model
E483 with nation wide service
support and spares availability



STEERING WHEEL & CONTROLS
Ergonomically placed operator
console and instrument cluster
ensures ease of operation.



OUTRIGGERS
Front Outriggers for added
safety during high lift
operations.



ROPS CABIN
Front mounted, ergonomically
designed Cabin for better
visibility and driveability.



ATS
After treatment system for
Emission Control



GROUND CLEARANCE
Ground clearance of 300mm
for easier rough terrain
operation.



**OPTIMIZED KINEMATICS
AND LOW C.G.**
F250 crane has been designed
for operational safety with low
Center of Gravity (C.G.) providing
best in class stability

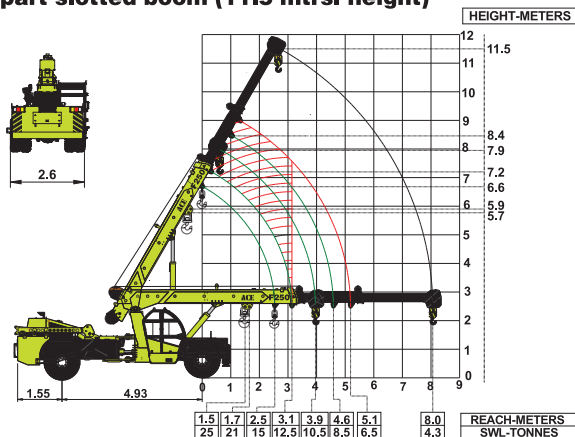


ECU
Electronic control unit
for better fuel economy and
diagnostic trouble shooting



ELECTRONIC CLUSTER
Digital Electronic Cluster with
advanced features.

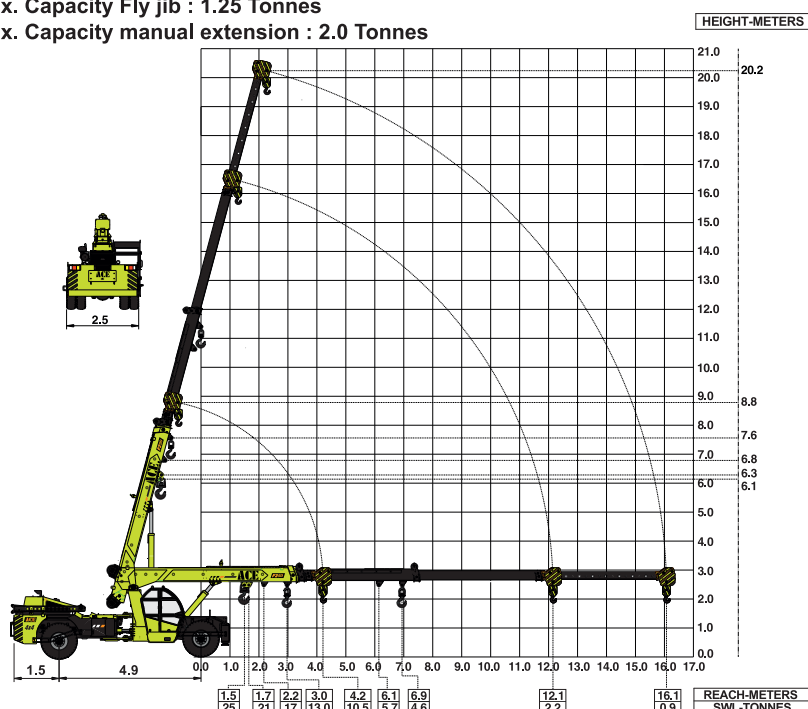
**ACE F250 Model Crane fitted with
3 part slotted boom (11.5 mtrs. height)**



ALL DIMENSIONS IN METERS ±5%

**ACE F250 Model Crane fitted with
3 part slotted boom + 1 Manual (19.3 mtrs. height)**

- Max. Capacity Fly jib : 1.25 Tonnes
- Max. Capacity manual extension : 2.0 Tonnes



ALL DIMENSIONS IN METERS ±5%

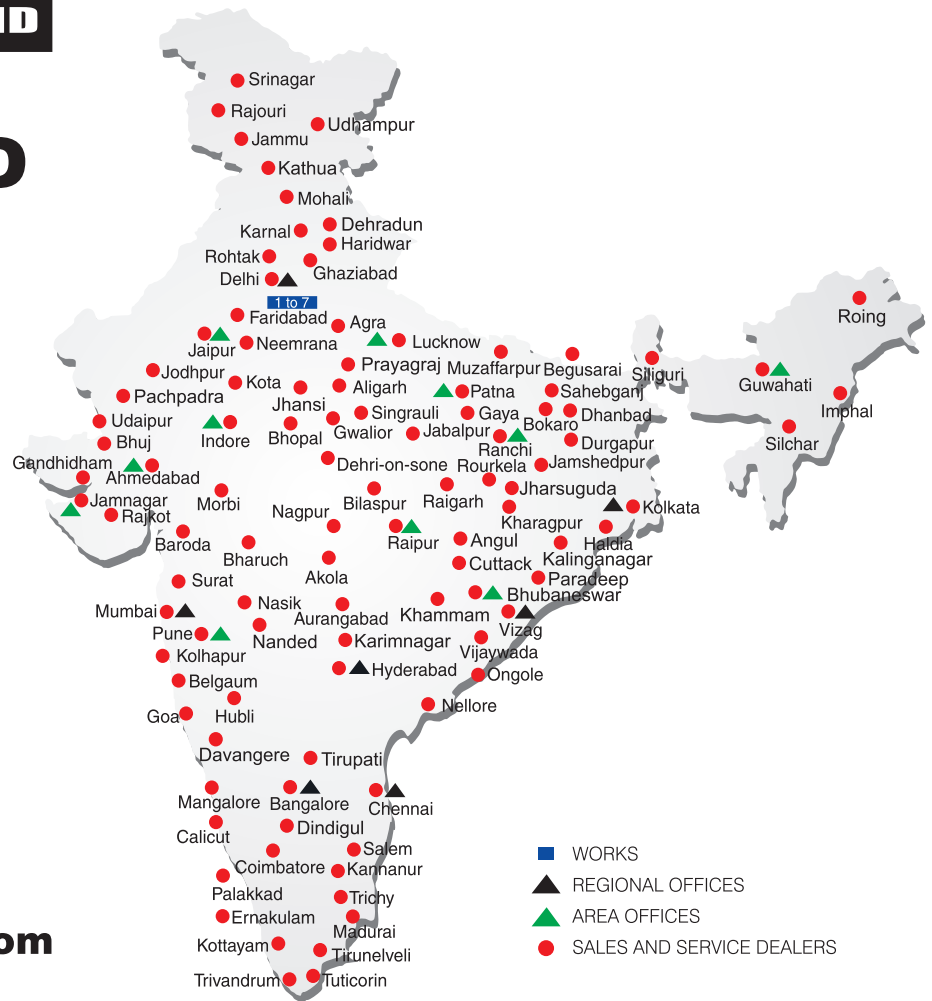
NOTE: • Rated loads are on the basis of operation on firm and level surface.
• Full rated lifting capacity available in articulated / steered condition.

BUILT TO PERFORM



**RELIABLE AND
DEPENDABLE
EFFICIENCY**

NETWORK



www.ace-cranes.com

MARKETING H.Q.

4th Floor, Pinnacle
 Surajkund, NCR-121009
 Ph.: +91-129-4550000
 Fax: +91-129-4550022
 E-mail: marketing@ace-cranes.com

REGISTERED OFFICE

Dudhola Link Road, Dudhola
 Palwal-121102, Haryana
 Ph.: +91-1275-280111
 Fax: +91-1275-280133
 CIN : L74899HR1995PLC053860

MUMBAI OFFICE

31, "Kalpataru Court"
 Chembur, Mumbai - 400074
 Ph.: +91-22-25206846, 25207070
 Fax: +91-22-25207071
 E-mail: acemumbai@ace-cranes.com

KOLKATA OFFICE

84A, AJC Bose Road, Fomra Tower -
 2nd Floor, Kolkata-700014
 Ph.: +91-9038070630
 E-mail: acekolkata@ace-cranes.com

CHENNAI OFFICE

1st Floor, "Aisa Agency", 165
 Eldams Road, Alwar Pet
 Chennai - 600018
 Ph.: +91-44-24314253
 Fax: +91-44-24314252
 E-mail: acechennai@ace-cranes.com

HERE TO SERVE YOU.

SPARE PARTS & SERVICE

ACE has all India Sales and Service network operating out of all the major cities. These outlets are fully equipped to provide genuine spare parts and services by company trained engineers. These outlets are further supported by company officials based at Delhi, Mumbai, Chennai, Kolkata, Ahmedabad, Surat, Pune, Jaipur, Chandigarh, Ranchi, Raipur, Indore, Bhubaneswar, Lucknow, Jamnagar, Hyderabad, Bangalore, Guwahati, Patna, Vizag & Kochi.



Action Construction Equipment Ltd.

Contact:



ACE reserves the right to alter any specifications without prior notice. Dimensions, weights & capacities mentioned herein are variable by $\pm 5\%$. Accessories if shown are not part of the Standard Equipment.