

100%
Swadeshi

ACE HXP150

Hydraulic Multi Activity Crane

Capacity : 15 tonnes

Man Lift Height : 21 Meters

Aerial Access Platform cum

Articulated Rough Terrain Crane

ACE INDIA'S NO. 1
CRANE BRAND

**PATENT
Pending**





Specifications

HXP 150

LIFTING CAPACITY (Free on wheels)	15 Tons Pick 'N' Carry Duty 230 Kgs Aerial Platform Duty (Manlift)
ENGINE	Simpson's S433(I) F1 (CEV BS-III), 4 cylinder, water cooled diesel engine or suitable equivalent engine
Rated Power	48 BHP (36KW) at 2200 RPM
TRANSMISSION	Heavy duty, sliding mesh with 6 forward and 2 reverse speeds with high low range selector.
Clutch	Heavy duty, single, dry friction, cerametallic clutch plate with diaphragm type pressure plate.
Top Speed	28 KMPH without load.
HYDRAULIC SYSTEM	<ul style="list-style-type: none">● Gear/Intra vane type main pump.● Four spools control valve (heavy duty)● Three spools control valve for basket operation● Suction line has 100 mesh size strainer while return line is fitted with 25 micron full flow filter● Two double acting lift cylinders, two double acting steering cylinders and two double acting extension cylinders
POWER STEERING	Articulation through 2 hydraulic cylinders 55° articulation on either side and turning radius of 6.5 Mtrs. (approx) on outer rear wheels.
BRAKES	<ul style="list-style-type: none">● Fully air actuated brakes on front and rear wheels. Front and rear brakes are actuated through a single pedal.● Parking brake is pneumatically operated, fail safe type
TELESCOPIC BOOM	4 part boom 3 part fully hydraulic & 4th part power extended
BOOM LUFFING Range	-3° to + 75°
HOIST	Winch is driven by hydraulic motor and fitted with hook block employing 4 falls of 13 mm dia rope.
Hoist Speed	50 Mtrs./Min. (Line speed)

FLUID CAPACITIES	
Air Cleaner	0.75 Ltrs.
Engine	8.00 Ltrs.
Fuel Tank	45.00 Ltrs.
Hydraulic Tank	125.00 Ltrs.
Transmission	48.00 Ltrs.
ELECTRICAL SYSTEM	12V. Negative earth with 35 Amp. alternator and 75 Amp hr. battery.
TYRES	
Front	11.00 x 20 - 16 PR (4 Nos.)
Rear	13.00 x 24 - 12 PR (2 Nos.)
SAFETY	<ul style="list-style-type: none">● Safe load indicator system with hydraulic cutoff● Basket capacity limiter (230 Kgs)● Audio overload indication.● Hose failure protection.● Audio over hoisting indication.● Safety brakes on hoist. Cylinder guards.
STANDARD EQUIPMENT	<ul style="list-style-type: none">● ROPS fully enclosed wide view cabin with rotomould canopy.● Front tyre protector.● Front and rear work lights.● Reflectors & rear view mirror.● Tool kit.● Gauges :-<ul style="list-style-type: none">a) Water temperature.b) Engine oil pressure.c) RPM meter cum hour recorderd) Air pressure
OPTIONAL EQUIPMENT	<ul style="list-style-type: none">● Fly jib.● Steering wheel● Spark arrester● 14.00 x 25 - 12 PR Rear Tyres
OPERATING WEIGHT	
FAW	5350 Kgs.
RAW	8000 Kgs.
Total	13350 Kgs.

ACE

AERIAL PLATFORM

Access platform / Man Lift Basket is provided with quick coupling connections for easy and fast Installation / Removal

Length	1800 mm (1.8 m)
Width	910 mm (0.91 m)
Capacity	230 Kgs
Maximum Working Height	21 m
Maximum Platform Height	19 m
Maximum Horizontal Outreach	16.8m
Jib Angle - Up	70°
- Down	70°
Jib Articulation Range	140° with 2 Mtrs. above & 2 Mtrs. below horizontal
Platform Rotation	180° (90° on either side) Hydraulically Driven through Slew / Rotary Drive

HXP150

MULTI ACTIVITY CRANE



Jib
Articulation



Platform Rotation





- 1 **LIFT CYLINDERS**
Heavy duty lift cylinders ensure higher lifting capacities.



- 2 **MAIN FRAME**
Heavy duty & robust construction.



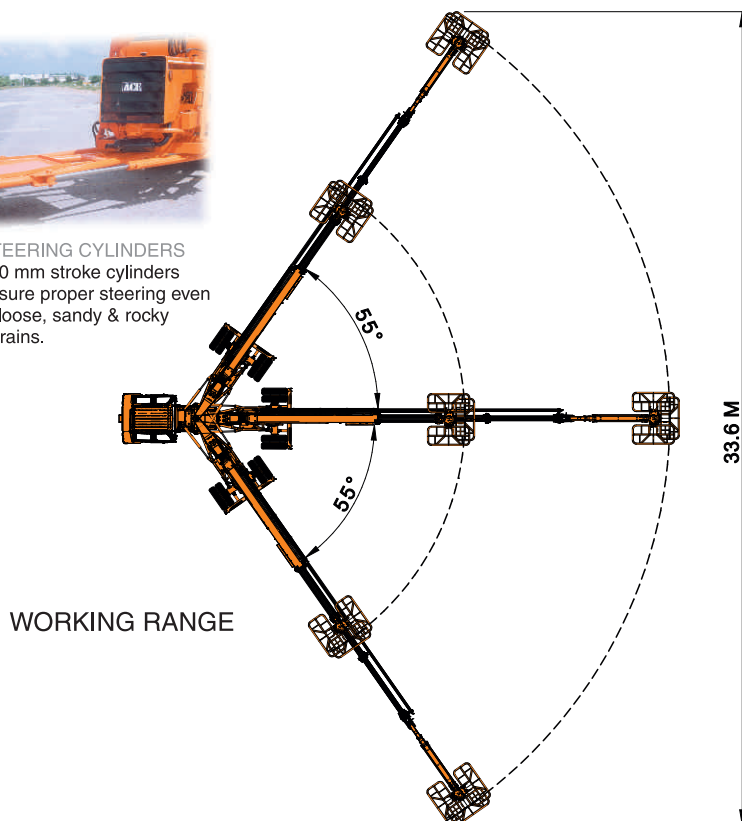
- 3 **GROUND CLEARANCE**
High ground clearance of 400mm for easier rough terrain operation.



- 4 **ROPS CABIN**
Wide view ROPS cabin with better visibility.

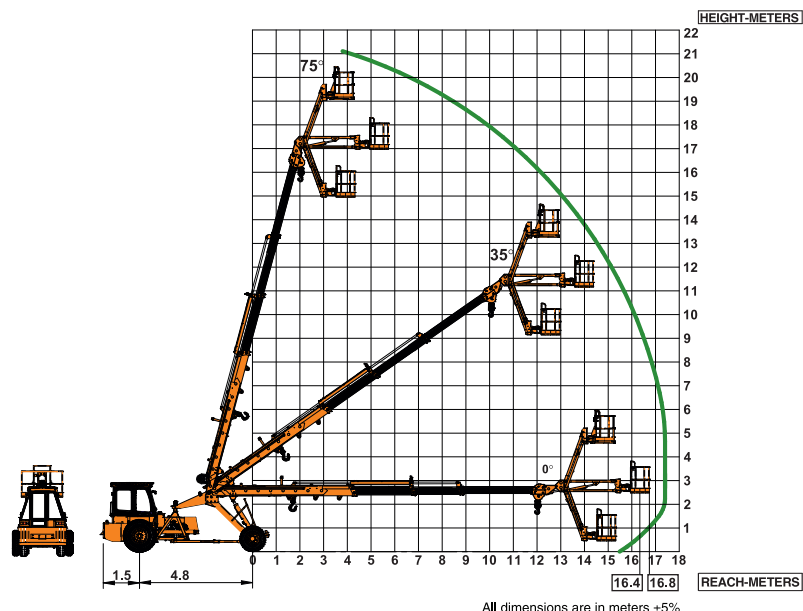


- 5 **STEERING CYLINDERS**
700 mm stroke cylinders ensure proper steering even in loose, sandy & rocky terrains.

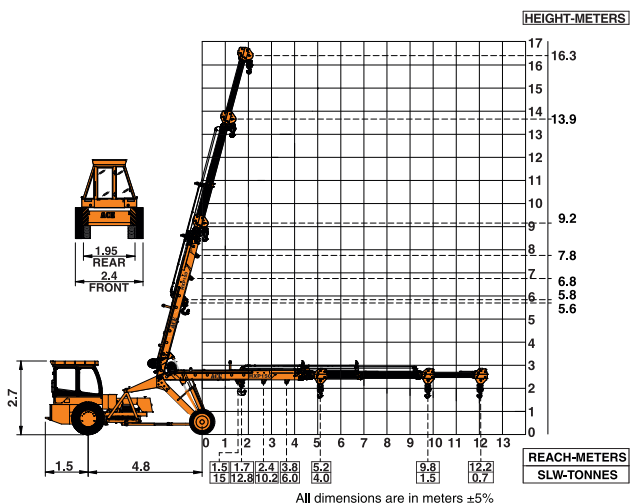


Man Basket Load Chart

- Man Basket Maximum Capacity - 230 Kgs
- SWL is based on 60% Stability and Strength.



HXP150 Model Crane fitted with 3P+1 Manual (16.3 Mtrs. height)



Mobile Cranes (9-80 Tonnes)



Tractors



Harvester Combine



Forklifts



Vibratory Rollers



Backhoe Loader



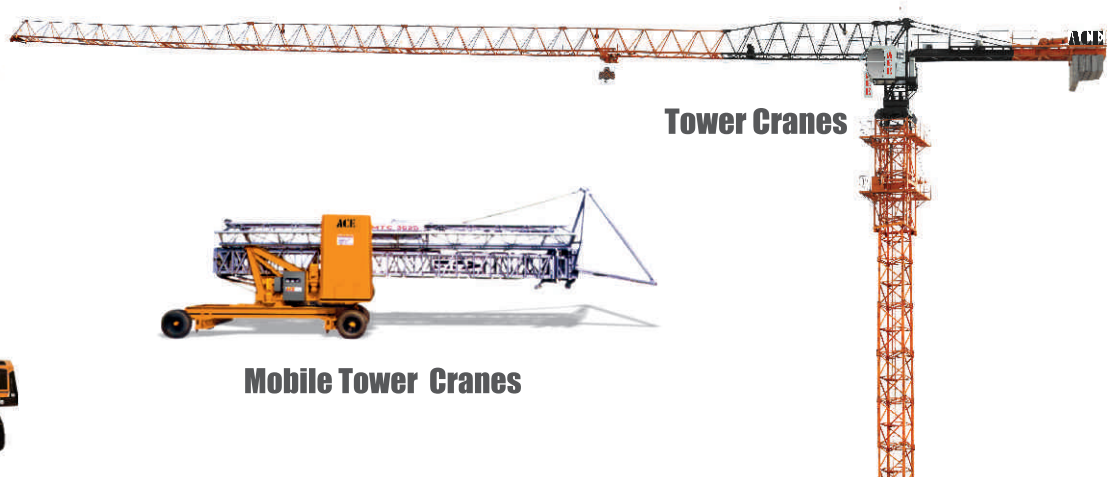
Motor Grader



Piling Rigs



Tower Cranes



Mobile Tower Cranes





Legend:

- WORKS
- ▲ REGIONAL OFFICES
- ▲ AREA OFFICES
- SALES AND SERVICE DEALERS



1st Floor, "Alsa Regency", 165
Eldams Road, Alwar Pet
Chennai - 600018
Ph.: +91-44-24314253
Fax: +91-44-24314252
E-mail: acechennai@ace-cranes.com