

100%  
Swadeshi

# ACE 14 XW

## Hydraulic Mobile Crane

14 Tonnes Capacity  
Rough terrain and rugged  
articulated Pick n Carry Crane.

- Best in class stability
- Better creep speed
- Heavy duty and robust construction
- Ergonomically designed cabin

**ACE** INDIA'S NO. 1  
CRANE BRAND



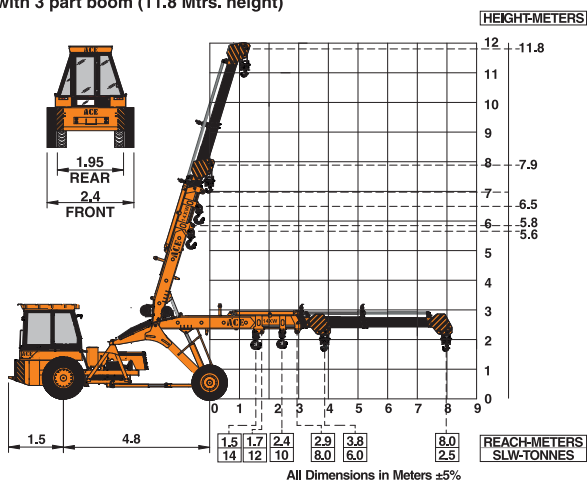
# Specifications

# 14XW

<b>LIFTING CAPACITY</b> (Free on wheels)	14 Tonnes
<b>ENGINE</b>	Simpson's S433 (CEV BS III) 4 cylinder, water cooled diesel engine OR suitable equivalent engine
Rated Power	48 HP (36 KW) at 2200 RPM
<b>TRANSMISSION</b>	Heavy duty, sliding mesh with 6 forward and 2 reverse speeds with high low range selector.
Clutch	Heavy duty, single, dry friction, cerametallic clutch plate with diaphragm type pressure plate.
Top Speed	28 KMPH without load.
<b>HYDRAULIC SYSTEM</b>	<ul style="list-style-type: none"> <li>● Gear/Intra vane type main pump.</li> <li>● Four spools control valve. (heavy duty)</li> <li>● Suction line has 100 mesh size strainer while return line is fitted with 25 micron full flow filter.</li> <li>● Two double acting lift cylinders, two double acting steering cylinders and one double acting extension cylinder.</li> </ul>
<b>POWER STEERING</b>	Articulation through 2 hydraulic cylinders 55° articulation on either side and turning radius of 6.5 Mtrs. (approx) on outer rear wheels.
<b>BRAKES</b>	Pneumatically assisted hydraulic brakes. Front and rear brakes are actuated through a single pedal.  Parking brake is Provided.
<b>TELESCOPIC BOOM</b>	Three part boom with hydraulically operated extensions (11.8 mtrs. height)
Telescoping Time	14 Seconds.

<b>BOOM LUFFING</b>	
Time	20 ± 3 Seconds.
<b>HOIST</b>	Winch is driven by hydraulic motor and fitted with hook block employing 4 falls of 13 mm dia rope.
Hoist Speed	50 Mtrs./Min. (Line speed)
<b>FLUID CAPACITIES</b>	
Engine	8.00 Ltrs.
Fuel Tank	45.00 Ltrs.
Hydraulic Tank	125.00 Ltrs.
Transmission	48.00 Ltrs.
<b>ELECTRICAL SYSTEM</b>	12V. Negative earth with 35 Amp. alternator and 75 Amp hr. battery.
<b>TYRES</b>	
Front	11.00 x 20 - 16 PR (4 Nos.)
Rear	13.00 x 24 - 12 PR (2 Nos.)
<b>SAFETY</b>	<ul style="list-style-type: none"> <li>● Audio overload indication.</li> <li>● Hose failure protection.</li> <li>● Audio over hoisting indication.</li> <li>● Safety brakes on hoist.</li> <li>● Cylinder guards.</li> </ul>
<b>STANDARD EQUIPMENT</b>	<ul style="list-style-type: none"> <li>● ROPS fully enclosed wide view cabin with rotomould canopy.</li> <li>● Front tyre protector.</li> <li>● Front and rear work lights.</li> <li>● Reflectors &amp; rear view mirror.</li> <li>● Tool kit.</li> <li>● Gauges :- <ul style="list-style-type: none"> <li>a) Water temperature.</li> <li>b) Engine oil pressure.</li> <li>c) RPM meter cum hour recorder</li> <li>d) Air pressure</li> </ul> </li> </ul>
<b>OPTIONAL EQUIPMENT</b>	<ul style="list-style-type: none"> <li>● Fly jib. (1.25 tonnes max capacity)</li> <li>● Steering Wheel</li> <li>● Spark arrester</li> <li>● Air Brakes</li> <li>● Fire Extinguisher</li> <li>● 3 part slotted boom with self adjusting Hook Block (fully hydraulic-12.9 mtrs. height)</li> <li>● 4 part slotted boom with self adjusting Hook Block (one manual extension-15.5 mtrs. height)</li> <li>● 4 part boom - 3 part fully hydraulic &amp; 4th part power extended (16.30 and 17.40m)</li> <li>● Mahindra 4485 Engine</li> <li>● Over hoisting hydraulic cutoff</li> <li>● Safe load indicator / LMI</li> <li>● City type double driving cabin</li> <li>● 14.00 x 25 Rear Tyres</li> </ul>
<b>OPERATING WEIGHT</b>	12000 kgs.

ACE 14 XW Model Crane fitted with 3 part boom (11.8 Mtrs. height)



**NOTE:** • All above specifications are pertaining to 14XW model fitted with 3 part boom  
• Rated loads are on the basis of operation on firm and level surface.

# ACE



## STEERING WHEEL & CONTROLS

Steering wheel is provided as an optional feature, which along with ergonomically placed operator console and instrument cluster ensures ease of operation.



## TRAVEL SPEED

Travel speed of 28 kmph provides faster intersite movements.



## ROPS CABIN

Wide view ROPS cabin with better visibility.



## MAIN FRAME

Heavy duty & robust construction.



## SELF ADJUSTING

### HOOK BLOCK (Optional)

Provides for safe boom extension and prevents damage of wire rope.



## STEERING CYLINDERS

700 mm stroke cylinders ensure proper steering even in loose, sandy & rocky terrains.



## LIFT CYLINDERS

Heavy duty spaced out lift cylinders ensure better stability



## INCREASED VISIBILITY

Bigger size front windscreen and re-routing of hoses provide much better front visibility.



## GROUND CLEARANCE

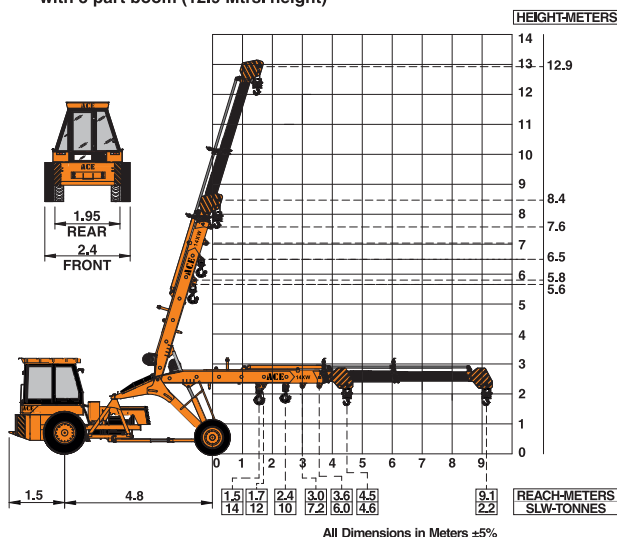
High ground clearance of 400mm for easier rough terrain operation.



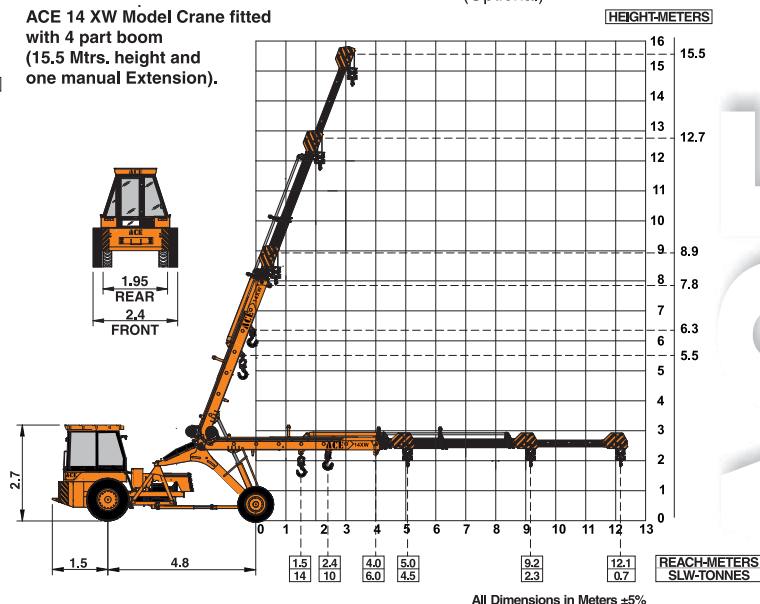
## SLOTTED BOOM

For easier load positioning (Optional)

ACE 14 XW Model Crane fitted with 3 part boom (12.9 Mtrs. height)



ACE 14 XW Model Crane fitted with 4 part boom (15.5 Mtrs. height and one manual Extension).



# ACE advantages

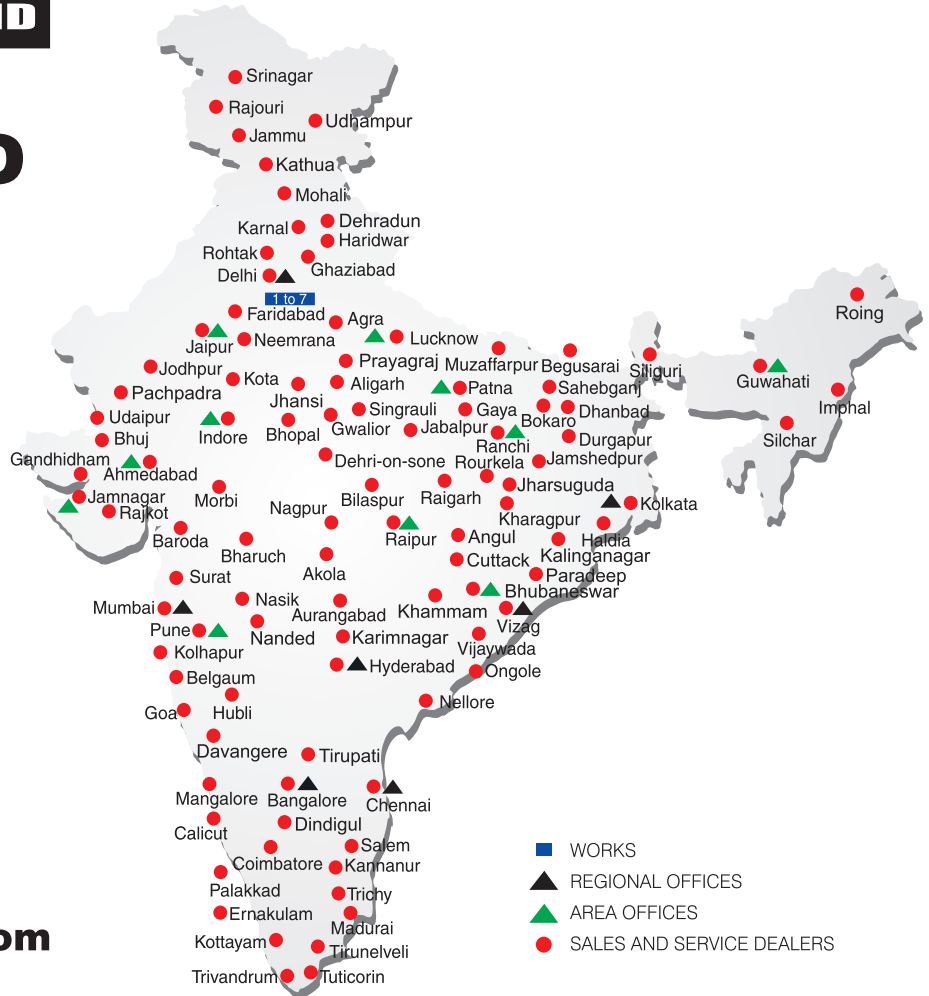


# BUILT TO PERFORM



## RELIABLE AND DEPENDABLE EFFICIENCY

## NETWORK



[www.ace-cranes.com](http://www.ace-cranes.com)

### MARKETING H.Q.

4th Floor, Pinnacle  
 Surajkund, NCR-121009  
 Ph.: +91-129-4550000  
 Fax: +91-129-4550022  
 E-mail: [marketing@ace-cranes.com](mailto:marketing@ace-cranes.com)

### REGISTERED OFFICE

Dudhola Link Road, Dudhola  
 Palwal-121102, Haryana  
 Ph.: +91-1275-280111  
 Fax: +91-1275-280133  
 CIN : L74899HR1995PLC053860

### MUMBAI OFFICE

31, "Kalpataru Court"  
 Chembur, Mumbai - 400074  
 Ph.: +91-22-25206846, 25207070  
 Fax: +91-22-25207071  
 E-mail: [acemumbai@ace-cranes.com](mailto:acemumbai@ace-cranes.com)

### KOLKATA OFFICE

84A, AJC Bose Road, Fomra Tower -  
 2nd Floor, Kolkata-700014  
 Ph.: +91-9038070630  
 E-mail: [acekolkata@ace-cranes.com](mailto:acekolkata@ace-cranes.com)

### CHENNAI OFFICE

1st Floor, "Alsa Regency", 165  
 Eldams Road, Alwar Pet  
 Chennai - 600018  
 Ph.: +91-44-24314253  
 Fax: +91-44-24314252  
 E-mail: [acechennai@ace-cranes.com](mailto:acechennai@ace-cranes.com)

## HERE TO SERVE YOU.

### SPARE PARTS & SERVICE

ACE has all India Sales and Service network operating out of all the major cities. These outlets are fully equipped to provide genuine spare parts and services by company trained engineers. These outlets are further supported by company officials based at Delhi, Mumbai, Chennai, Kolkata, Ahmedabad, Surat, Pune, Jaipur, Chandigarh, Ranchi, Raipur, Indore, Bhubaneswar, Lucknow, Jamnagar, Hyderabad, Bangalore, Guwahati, Patna, Vizag & Kochi.



**Action Construction Equipment Ltd.**

Contact:



ACE reserves the right to alter any specifications without prior notice. Dimensions, weights & capacities mentioned herein are variable by  $\pm 5\%$ . Accessories if shown are not part of the Standard Equipment.