



ACE

Rhino 90C

Hydraulic Mobile Crane

Rough terrain and rugged
articulated pick n move crane

ACE INDIA'S NO. 1
CRANE BRAND

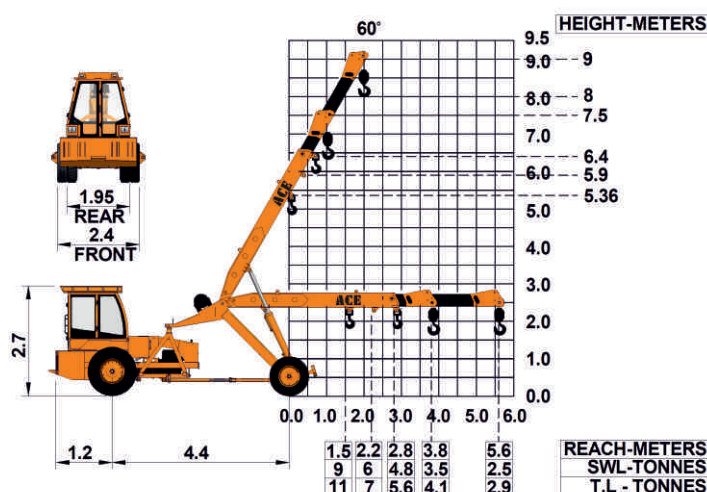


Specifications

Rhino 90 C

LIFTING CAPACITY (Free on wheels)	9 Tonnes - SWL 11 Tonnes - TL
ENGINE	Mahindra 4485 IAE (BS III CEV) 4 cylinder, water cooled diesel engine OR suitable equivalent engine
Rated Power	47.5 HP (34.9 KW) at 2200 RPM
TRANSMISSION	Sliding mesh with 6 forward and 2 reverse speeds and high low range selector.
Clutch	Single, dry friction, clutch plate.
Top Speed	29 KMPH without load.
HYDRAULIC SYSTEM	<ul style="list-style-type: none"> ● Gear/Intra vane type main pump. ● Four spool control valve. ● Suction line has 100 mesh size strainer while return line is fitted with 25 micron full flow filter. ● Two double acting lift cylinders, two double acting steering cylinders and one double acting extension cylinder.
BRAKES	Pneumatically assisted hydraulic brakes. Front and rear brakes are actuated through a single pedal. Parking brake is Provided.
STEERING	Hydraulically operated with 55° articulation on either side and turning radius of 5.5 Mtrs. (approx) on outer rear wheels.
ELECTRICAL SYSTEM	12V. Negative earth with 35 Amp. alternator and 75 Amp hr. battery.
TELESCOPIC BOOM	Two part slotted boom with hydraulically operated extension of 1800 mm stroke.
Telescoping Time	10 Seconds.
BOOM LUFFING	
Range	-5° to + 60°
Time	20 Seconds.
HOIST	Winch is driven by hydraulic motor employing 4 falls of 13 mm dia rope.
Hoist Speed	50 Mtrs./Min. (Line speed)
TYRES	
Front	10.00 x 20 - 16PR (4 Nos.)
Rear	13.00 x 24 - 12PR (2 Nos.)
FLUID CAPACITIES	
Air Cleaner	0.75 Ltrs.
Engine	8.00 Ltrs.
Fuel Tank	45.00 Ltrs.
Hydraulic Tank	100.00 Ltrs.
Transmission	48.00 Ltrs.

STANDARD EQUIPMENT	<ul style="list-style-type: none"> ● ROPS fully enclosed wide view cabin. ● Front tyre protector. ● Front and rear work lights. ● Reflectors. ● Tool kit. ● Gauges :- <ul style="list-style-type: none"> a) Water Temperature. b) Engine oil pressure. c) RPM meter cum hour recorder. d) Air pressure
SAFETY	<ul style="list-style-type: none"> ● Audio overload indication. ● Hose failure protection. ● Audio over hoisting indication. ● Safety brakes on hoist. ● Cylinder guards.
OPTIONAL EQUIPMENT	<ul style="list-style-type: none"> ● Fly jib. (1.25 tonnes max capacity) ● Steering wheel. ● Spark arrestor. ● Over hoisting hydraulic cut off. ● Safe load indicator / LMI. ● City type double driving cabin,
VARIANT MODELS	<ul style="list-style-type: none"> ● Rhino 90 (2300mm extension stroke) ● Rhino 90 T (without winch).
OPERATING WEIGHT	7750 kgs.





- 1 TRAVEL SPEED**
Travel speed of 29 kmph provides faster intersite movements.



- 2 LIFTING HEIGHT**
Higher lifting height of 9 mtrs.



- 3 GROUND CLEARANCE**
High ground clearance of 400mm for easier rough terrain operation.



- 4 ROPS CABIN**
Wide view ROPS cabin with curved windscreen for better visibility.



- 5 LIFTING CAPACITY**
Higher lifting capacity of 9 Tonne SWL/ 11 Tonne TL.



- 6 INCREASED VISIBILITY**
Bigger size front windscreen and re-routing of hoses provide much better front visibility.



- 7 FULL LENGTH CHASSIS**
Provides better support to the power train leading to increased stability.



- 8 TURNING RADIUS**
Lower turning radius of 5.5 mtrs. facilitates better maneuverability and movement in confined spaces.



- 9 MAIN FRAME**
Heavy duty & robust construction.

BUILT TO PERFORM

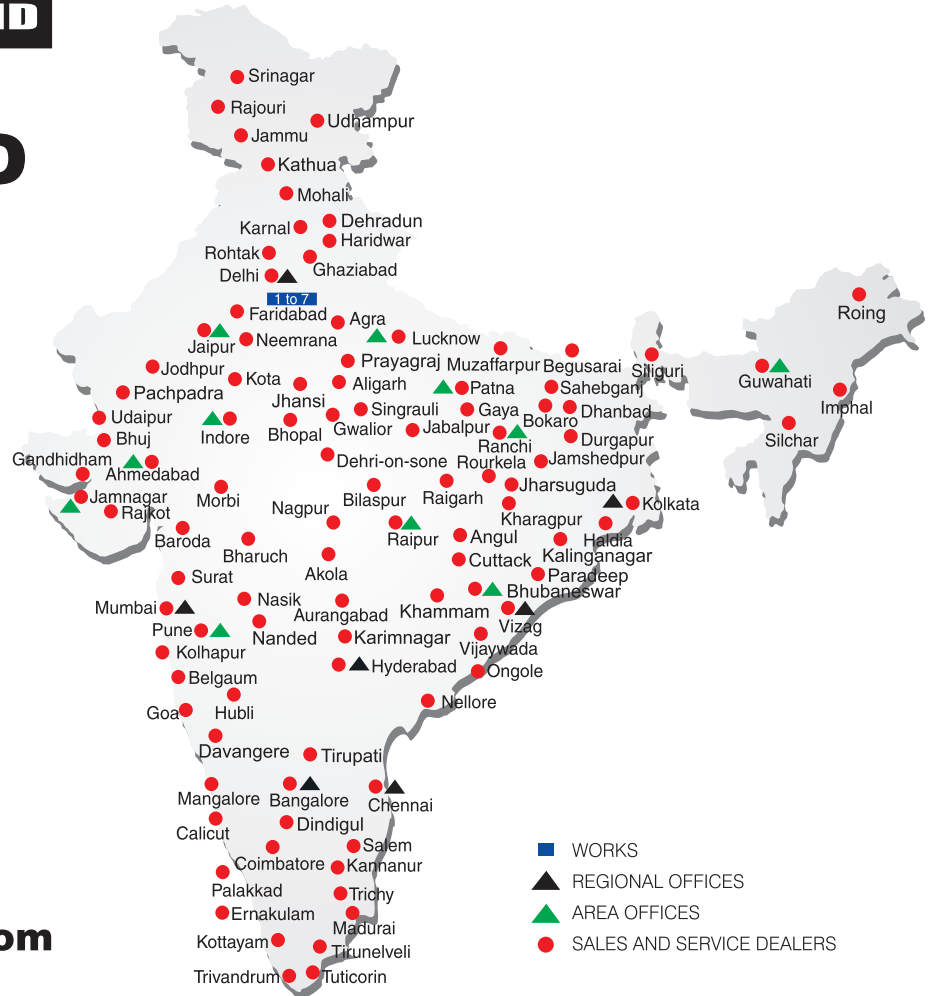


ACE

**INDIA'S NO. 1
CRANE BRAND**

**RELIABLE AND
DEPENDABLE
EFFICIENCY**

NETWORK



**Toll Free Help Line
1800 1800 004**

www.ace-cranes.com

MARKETING H.Q.

4th Floor, Pinnacle
Surajkund, NCR-121009
Ph.: +91-129-4550000
Fax: +91-129-4550022
E-mail: marketing@ace-cranes.com

REGISTERED OFFICE

Dudhola Link Road, Dudhola
Palwal-121102, Haryana
Ph.: +91-1275-280111
Fax: +91-1275-280133
CIN : L74899HR1995PLC053860

MUMBAI OFFICE

31, "Kalpataru Court"
Chembur, Mumbai - 400074
Ph.: +91-22-25206846, 25207070
Fax: +91-22-25207071
E-mail: acemumbai@ace-cranes.com

KOLKATA OFFICE

84A, AJC Bose Road, Fomra Tower -
2nd Floor, Kolkata-700014
Ph.: +91-9038070630
E-mail: acekolkata@ace-cranes.com

CHENNAI OFFICE

1st Floor, "Alsa Regency", 165
Eldams Road, Alwar Pet
Chennai - 600018
Ph.: +91-44-24314253
Fax: +91-44-24314252
E-mail: acechennai@ace-cranes.com

HERE TO SERVE YOU.

SPARE PARTS & SERVICE

ACE has all India Sales and Service network operating out of all the major cities. These outlets are fully equipped to provide genuine spare parts and services by company trained engineers. These outlets are further supported by company officials based at Delhi, Mumbai, Chennai, Kolkata, Ahmedabad, Surat, Pune, Jaipur, Chandigarh, Ranchi, Raipur, Indore, Bhubaneswar, Lucknow, Jamnagar, Hyderabad, Bangalore, Guwahati, Patna, Vizag & Kochi.

ACE

Action Construction Equipment Ltd.

Contact:



ACE reserves the right to alter any specifications without prior notice. Dimensions, weights & capacities mentioned herein are variable by $\pm 5\%$. Accessories if shown are not part of the Standard Equipment.