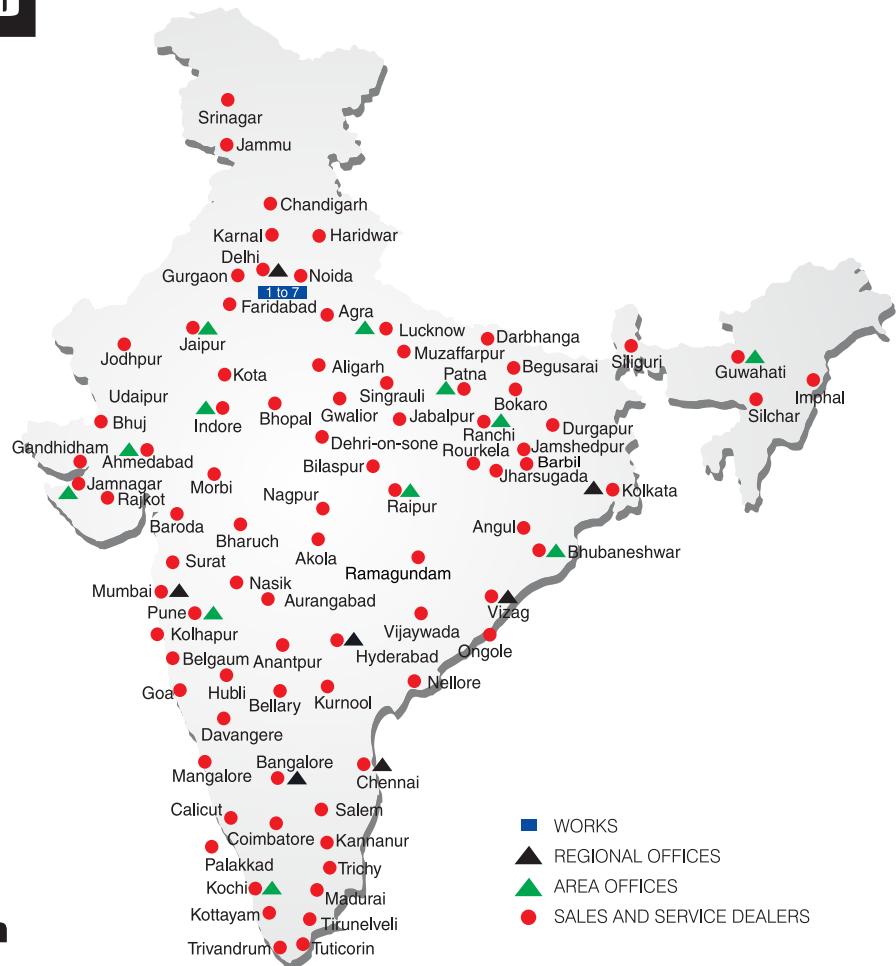


BUILT TO PERFORM



**RELIABLE AND
DEPENDABLE
EFFICIENCY**

NETWORK



**Toll Free Help Line
1800 1800 004**
www.ace-cranes.com

MARKETING H.Q. 4th Floor, Pinnacle Surajkund, NCR-121009 Ph.: +91-129-4550000 Fax: +91-129-4550022 E-mail: marketing@ace-cranes.com	REGISTERED OFFICE Dudhola Link Road, Dudhola Chembur, Mumbai - 400074 Ph.: +91-1275-280111 Fax: +91-1275-280133 CIN : L74899HR1995PLC053860	MUMBAI OFFICE 31, "Kalpataru Court" Chembur, Mumbai - 400074 Ph.: +91-22-25206846, 25207070 Fax: +91-22-25207071 E-mail: acemumbai@ace-cranes.com	KOLKATA OFFICE "Forma Towers" 84-A, Second Floor AJC Bose Road, Kolkata - 700014 Ph.: +91-9038070630 E-mail: acekolkata@ace-cranes.com	CHENNAI OFFICE 1st Floor, "Alsa Regency", 165 Eldams Road, Alwar Pet Chennai - 600018 Ph.: +91-44-24314253 Fax: +91-44-24314252 E-mail: acechennai@ace-cranes.com
-----------------------------------------------------------------------------------------------------------------------------------------------------------	-------------------------------------------------------------------------------------------------------------------------------------------------------------------	-------------------------------------------------------------------------------------------------------------------------------------------------------------------------	-----------------------------------------------------------------------------------------------------------------------------------------------------------	--------------------------------------------------------------------------------------------------------------------------------------------------------------------------------------------

HERE TO SERVE YOU.

SPARE PARTS & SERVICE
ACE has all India Sales and Service network operating out of all the major cities. These outlets are fully equipped to provide genuine spare parts and services by company trained engineers. These outlets are further supported by company officials based at Delhi, Mumbai, Chennai, Kolkatta, Ahmedabad, Surat, Pune, Jaipur, Chandigarh, Ranchi, Raipur, Indore, Bhubneshwar, Lucknow, Jamnagar, Hyderabad, Bangalore, Guwahati, Patna, Vizag & Kochi.

Action Construction Equipment Ltd.
Contact:

CERTIFIED
MANAGEMENT SYSTEM
ISO 9001

ACE reserves the right to alter any specifications without prior notice. Dimensions, weights & capacities mentioned herein are variable by ± 5%. Accessories if shown are not part of the Standard Equipment.

ACE NX 360° 15

NextGen Multi Activity Crane

360° Full Slew and Pick 'N' Carry,
Rough Terrain Articulated Crane



**PATENT
Pending**

ACE

Mobile Cranes (9-80 Tonnes)



Tractors



Forklifts



Harvester Combine



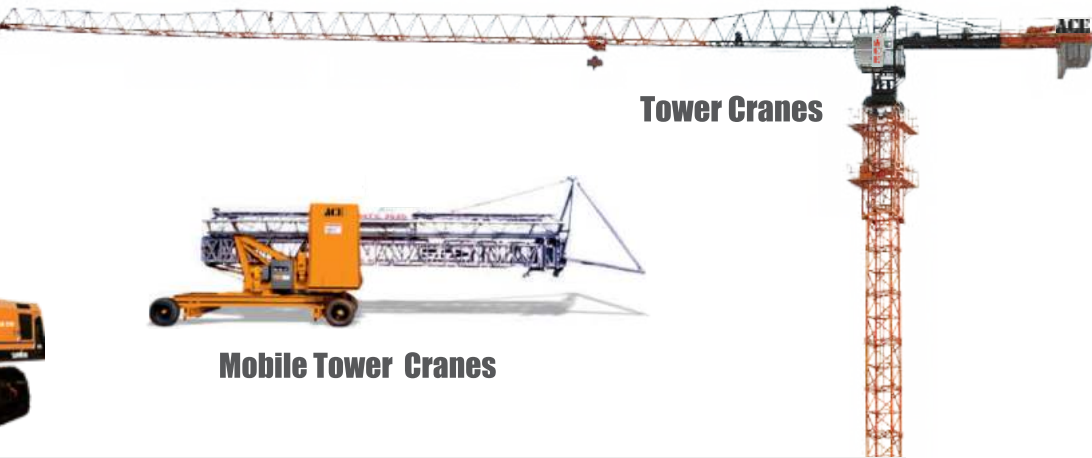
Vibratory Rollers



Backhoe Loader



Crawler Cranes



Piling Rigs



Tower Cranes

Mobile Tower Cranes



ACE

ACE

ACE

Specifications

NX 360° 15

MAX LIFTING CAPACITY	15 Tonnes
ENGINE	Tata 4 Cylinder, Water Cooled Diesel Engine or equivalent
Rated Power	76 HP (56 kw) at 2200 RPM
TRANSMISSION	Heavy duty, synchromesh with 8 forward and 2 reverse speeds and Hi-low drive selector for creep speed
Axles	Front axle is rigidly mounted on the chassis. Rear drive axle is mounted with 2 nos. Leaf springs.
Drive	4 x 2
Clutch	Heavy duty, single, dry friction type hydraulic clutch.
Top Speed	40 KMPH on even metaled Road (without load)
Gradeability	40 % (unladen)
STEERING	Full power orbitrol with twin hydraulic double acting cylinders and 40° articulation on either side
Turning Radius	7.4 Mtrs. on outer rear wheels.
BRAKES	<ul style="list-style-type: none">Dual Circuit BrakesFully Pneumatic brakes on front and rear wheels.Parking brake is pneumatically operated, fail safe type
HYDRAULIC SYSTEM	<ul style="list-style-type: none">Gear type tandem pumpFour spools for crane operation.Seven spools for outrigger operation.Suction line has 100 mesh size strainer while return line is fitted with 25 micron full flow filter.

SUPER STRUCTURE	Super structure is capable of continuous slewing in either direction and mounted with sealed slew bearing.
OUTRIGGERS	
Front outriggers	Hydraulically operated telescopic outrigger beams with vertical hydraulic jacks fitted with safety lock valves.
Rear outriggers	Hydraulically operated swing and telescopic outrigger beams with vertical hydraulic jacks fitted with safety lock valves.
SLEWING	Hydraulic motor fitted with counter balance valve providing 360° continuous slew
BOOM DERRICKING	Two double acting hydraulic cylinders with counter balance safety valve
BOOM LUFFING Range	-2° to + 64°
TELESCOPIC BOOM	<ul style="list-style-type: none">4 section boom with 2 sections hydraulically operated & synchronized and 4th section power extendedDouble acting hydraulic cylinder with counter balance safety valve is provided for boom telescoping
HOIST	Winch is driven by hydraulic motor and fitted with rope tensioner. Hoisting is provided through self adjusting hook block employing 6 falls of 13mm dia. Rope.
Hoist Speed	50 Mtrs./Min (Line Speed)
ELECTRICAL SYSTEM	12v, Negative earth.

Specifications

NX 360° 15

TYRES	
Front	11.00x20-16 PR (4 NOS.)
Rear	14.00x25-20 PR (2 NOS.)
SAFETY	<ul style="list-style-type: none">Safe load indicator with cutoffHose failure protectionAudio over hoisting Indication with cut offSafety brakes on hoistSelf-adjusting hook blockRear wheel guards
OPTIONAL EQUIPMENT	<ul style="list-style-type: none">Flyjib (Max Capacity : 1.25 Tonnes)Spark arrestorFire ExtinguisherFront and side Proximity SensorsCabin front glass protector

STANDARD EQUIPMENT

- Front & rear outriggers
- ROPS fully enclosed wide view cabin
- Load view camera
- Rear view camera
- Front and rear work lights
- Helper/Slinger seat
- Reflectors & rear view mirrors
- Beacon rotating light
- Tool Kit
- Cabin fan
- Wiper Motor
- Gauges :
 - a) Water Temperature.
 - b) Engine Oil Pressure.
 - c) Fuel Gauge
 - d) RPM meter cum hour recorder
 - e) Air Pressure Gauge
 - f) Speedometer

OPERATING WEIGHT

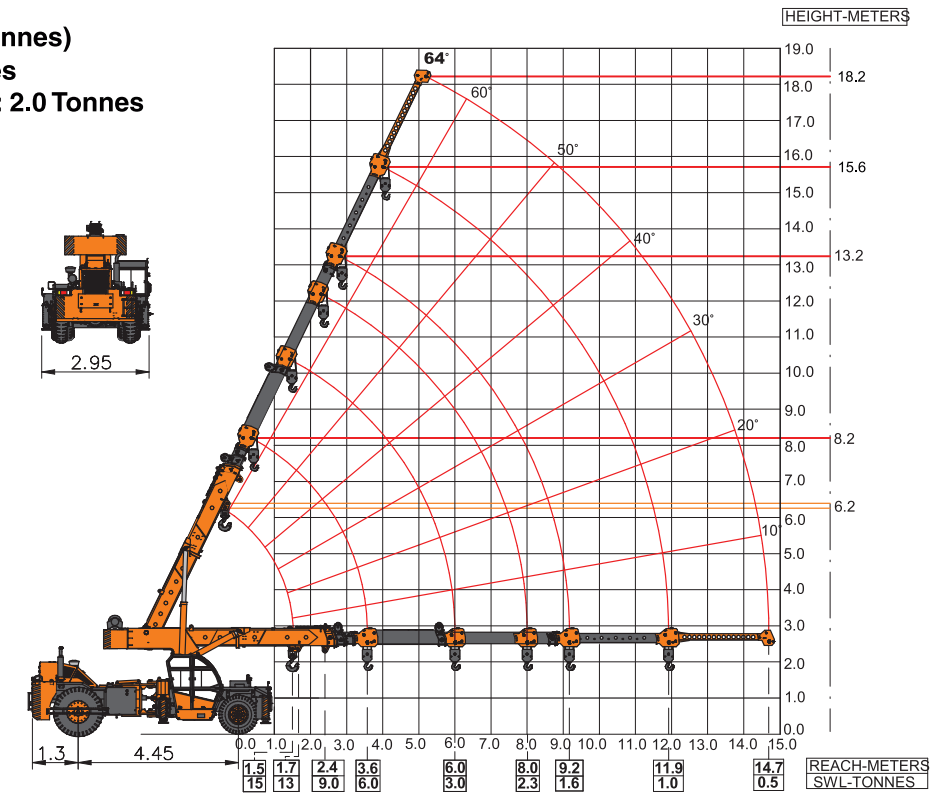
Front axle	9800 Kgs.
Rear Axle	8500 Kgs.
Total Weight	18300 Kgs.

NX 360° 15

100%
Swadeshi

Load Chart : Pick 'N' Carry Duty (Tonnes)

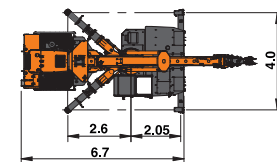
- Max. Capacity Fly Jib : 1.25 Tonnes
- Max. Capacity Manual Extension : 2.0 Tonnes

MULTI
ACTIVITY
CRANE

Load Chart : Slew Duty (Kgs)

- Outriggers : Fully swung out and fully extended
- Slewing Range : 360° Continuous

SLEW RADIUS (M)	BOOM LENGTH IN METERS					
	HOOK BLOCK (A)					FLY JIB
	MANUAL EXT. CLOSED	MANUAL EXT. OPEN	MANUAL EXT. OPEN	BOOM FULLY EXTENDED	BOOM FULLY EXTENDED	BOOM FULLY EXTENDED
2.5	15000	9000				
2.8	13500	9000				
3.0	11500	9000				
4.0	9500	9000	9000			
5.0		6000	5900	5800		
6.0		4800	4400	4400	4200	2000
7.0			3500	3200	3200	1800
8.0				2900	2900	1600
9.0				2200	2000	1500
10.0					1700	1200
11.0						1000
12.0						900
13.0						800
14.0						600
15.0						500
16.0						500



NOTE:

- Lifting capacities for supported operation only on firm level ground.
- SWL are based on 85% stability as per IS: 4573.
- Lifting capacity = Actual load + Chain/Slings.

