

# 4x4

# ACE F210

## Nextgen Hydraulic Crane Capacity : 20 tonnes

Rough terrain and rugged, 4x4 articulated NextGen pick 'n' move crane



**ACE** INDIA'S NO. 1  
CRANE BRAND



- CEV stage IV engine
- Heavy duty drive line
- Improved kinematics with low
- Center of gravity
- Slotted boom
- Self adjusting hook block
- Fail safe air brakes
- Better creep speed

## Specifications

## F-210

<b>LIFTING CAPACITY</b>	20 Tonnes
<b>ENGINE</b>	Volvo Eicher (CEV Stage IV) Diesel Engine Model E483 CRDi, 4 cylinder, Water Cooled, Turbo Charged Engine with Electronic Control Unit (ECU)
Rated Power	101 HP at 2200 RPM
<b>TRANSMISSION</b>	Heavy Duty Synchromesh with 10 Forward and 2 reverse speeds. Auxiliary Gear Box with Hi/Low & 2WD/4WD selector.
Axles	Front axle is rigidly mounted on the chassis. Rear drive axle is mounted with 2 nos. Leaf springs.
Drive	4 Wheel drive.
Clutch	Heavy duty, single, dry friction type hydraulic clutch.
Creep Speed	1.3 KMPH
Top Speed	38 KMPH on even metaled Road (without load)
Gradeability	40 % (unladen)
<b>STEERING</b>	Full power orbitrol with twin hydraulic double acting cylinders and 40° articulation on either side
Turning Radius	7.6 Mtrs. on outer rear wheels.
<b>BRAKES</b>	<ul style="list-style-type: none"> <li>• Dual Circuit Brakes</li> <li>• Fully Pneumatic brakes on front and rear wheels.</li> <li>• Parking brake is pneumatically operated, fail safe type</li> </ul>
<b>HYDRAULIC SYSTEM</b>	<ul style="list-style-type: none"> <li>• Gear/Intra Vane type main pump</li> <li>• Five spools control valve with built in Relief Valve (Heavy duty)</li> <li>• Suction line has 100 mesh size strainer while return line is fitted with 25 micron filter.</li> <li>• Two double acting lift cylinders, two double acting steering cylinders and one double acting extension cylinder.</li> </ul>
<b>TELESCOPIC BOOM</b>	4 part slotted boom, 2 part hydraulically operated & synchronized and 4th part power extended
<b>BOOM LUFFING Range</b>	-7° to + 70°

<b>HOIST</b>	3.5 Tonnes Line Pull Winch is driven by hydraulic motor and fitted with rope tensioner. Hoisting is provided through self adjusting hook block employing 6 falls of 13mm dia. Rope.
Hoist Speed	35 Mtrs./Min (Line Speed)
<b>ELECTRICAL SYSTEM</b>	12v, Negative Earth (100 AH Battery)
<b>TYRES</b>	
Front	12.00x20-18 PR (4 NOS.)
Rear	12.00x20-18 PR (4 NOS.)
Wheel Base	4300 mm
Wheel Track	1840 mm
<b>SAFETY</b>	<ul style="list-style-type: none"> <li>• Hose failure protection</li> <li>• Audio over hoisting Indication</li> <li>• Safety brakes on hoist</li> <li>• Self-adjusting hook block</li> <li>• Front and rear wheel guards</li> </ul>
<b>STANDARD EQUIPMENT</b>	<ul style="list-style-type: none"> <li>• ROPS fully enclosed wide view cabin</li> <li>• Front work lights</li> <li>• Reflectors and rear view mirror</li> <li>• Tool kit</li> <li>• Cabin fan</li> <li>• Wiper motor</li> <li>• Instrument Cluster :-               <ol style="list-style-type: none"> <li>a) Fuel level gauge</li> <li>b) Air pressure gauge</li> <li>c) Oil pressure gauge</li> <li>d) Coolant temp</li> <li>e) Engine RPM</li> <li>f) Speedometer</li> <li>g) Odo meter</li> <li>h) Engine Hour Recorder</li> <li>i) Fault Detector Codes (P-Codes)</li> </ol> </li> <li>• Rear view camera</li> <li>• Front Outriggers</li> <li>• Beacon Rotating Light</li> </ul>
<b>OPTIONAL EQUIPMENT</b>	<ul style="list-style-type: none"> <li>• Fly jib (1.25 Tonnes Max. Capacity)</li> <li>• Safe load indicator/ LMI</li> <li>• Over Hoist hydraulic cutoff</li> <li>• Fire extinguisher</li> <li>• Cabin Front Glass Protector</li> <li>• Helper / Slinger Seat</li> <li>• Drag Winch</li> <li>• Spark arrestor</li> <li>• 3 part slotted boom (12.1 mtrs. height)</li> <li>• Front &amp; Side Proximity Sensor</li> <li>• Man Basket Attachment</li> <li>• Fork Attachment</li> <li>• Ram Attachment</li> </ul>
<b>OPERATING WEIGHT</b>	19855 Kgs.

# ACE

100%  
Swadeshi

## 4x4



### ENGINE

Volvo Eicher (CEV Stage IV)  
CRDi Diesel Engine Model E483  
with nation wide service support and  
spares availability



### ROPS CABIN

Front mounted, ergonomically  
designed Cabin for better  
visibility and driveability.



### ECU

Electronic control unit  
for better fuel economy and  
diagnostic trouble shooting



### GROUND CLEARANCE

Ground clearance of 300mm  
for easier rough terrain  
operation.



### ELECTRONIC CLUSTER

Digital Electronic Cluster with  
advanced features.



### OPTIMIZED KINEMATICS AND LOW C.G.

F210 crane has been designed  
for operational safety with low  
Center of Gravity (C.G.) providing  
best in class stability



### STEERING WHEEL & CONROLS

Ergonomically placed operator  
console and instrument cluster  
ensures ease of operation.



### ATS

After treatment system for  
Emission Control

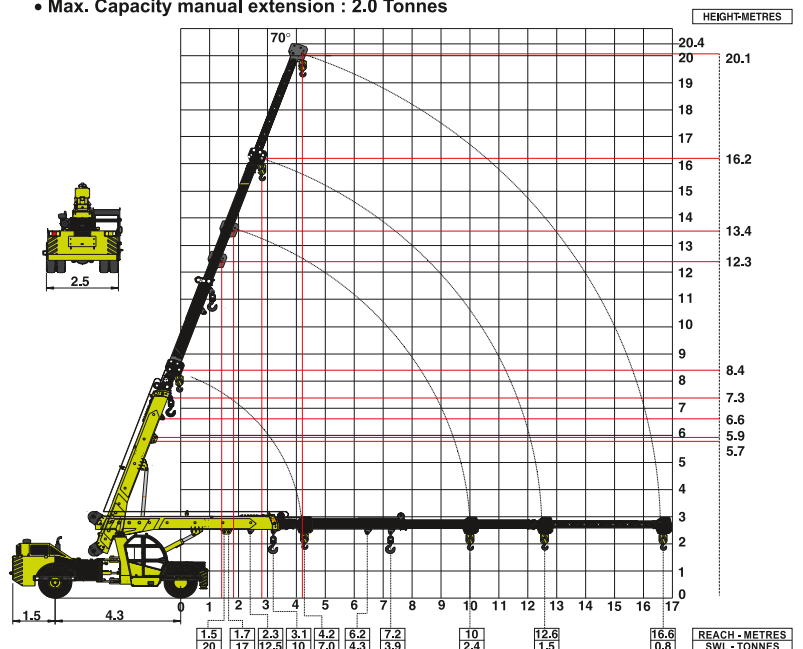


### OUTRIGGERS

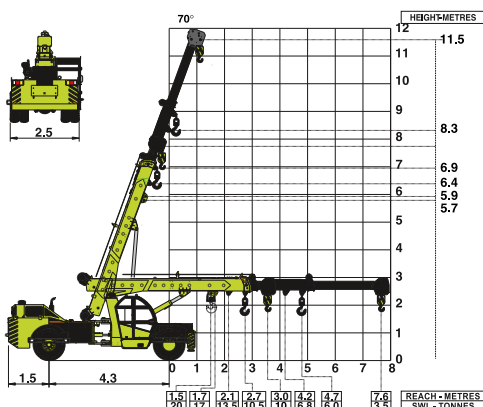
Front Outriggers for added  
safety during high lift  
operations.

### ACE F210 Model Crane fitted with 3 part slotted boom + 1 Manual (20.1 mtrs. height)

- Max. Capacity Fly jib : 1.25 Tonnes
- Max. Capacity manual extension : 2.0 Tonnes



### ACE F210 Model Crane fitted with 3 part slotted boom (11.5 mtrs. height)



ALL DIMENSIONS IN METERS ±5%

ALL DIMENSIONS IN METERS ±5%

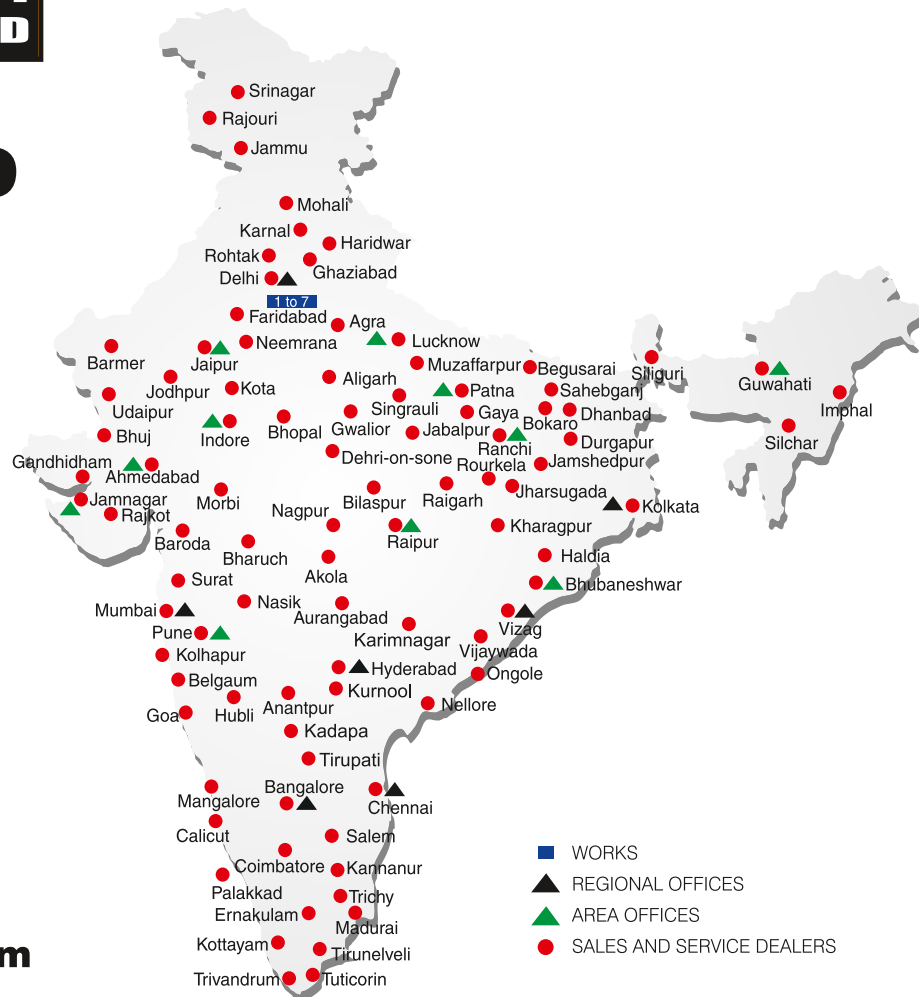
NOTE: • Rated loads are on the basis of operation on firm and level surface.  
• Full rated lifting capacity available in articulated / steered condition.

# BUILT TO PERFORM



**RELIABLE AND  
DEPENDABLE  
EFFICIENCY**

## NETWORK



**Toll Free Help Line  
1800 1800 004**

**www.ace-cranes.com**

### MARKETING H.Q.

4th Floor, Pinnacle  
Surajkund, NCR-121009  
Ph.: +91-129-4550000  
Fax: +91-129-4550022  
E-mail: marketing@ace-cranes.com

### REGISTERED OFFICE

Dudhola Link Road, Dudhola  
Palwal-121102, Haryana  
Ph.: +91-1275-280111  
Fax: +91-1275-280133  
CIN : L74899HR1995PLC053860

### MUMBAI OFFICE

31, "Kalpataru Court"  
Chembur, Mumbai - 400074  
Ph.: +91-22-25206846, 25207070  
Fax: +91-22-25207071  
E-mail: acemumbai@ace-cranes.com

### KOLKATA OFFICE

"Forma Towers" 84-A, Second Floor  
AJC Bose Road, Kolkata - 700014  
Ph.: +91-9038070630  
E-mail: acekolkata@ace-cranes.com

### CHENNAI OFFICE

1st Floor, "Alsa Regency", 165  
Eldams Road, Alwar Pet  
Chennai - 600018  
Ph.: +91-44-24314253  
Fax: +91-44-24314252  
E-mail: acechennai@ace-cranes.com

## HERE TO SERVE YOU.

### SPARE PARTS & SERVICE

ACE has all India Sales and Service network operating out of all the major cities. These outlets are fully equipped to provide genuine spare parts and services by company trained engineers. These outlets are further supported by company officials based at Delhi, Mumbai, Chennai, Kolkata, Ahmedabad, Surat, Pune, Jaipur, Chandigarh, Ranchi, Raipur, Indore, Bhubneshwar, Lucknow, Jamnagar, Hyderabad, Bangalore, Guwahati, Patna, Vizag & Kochi.



**Action Construction Equipment Ltd.**

Contact:



ACE reserves the right to alter any specifications without prior notice. Dimensions, weights & capacities mentioned herein are variable by  $\pm 5\%$ . Accessories if shown are not part of the Standard Equipment.