



ACE F170

Nextgen Hydraulic Crane Capacity: 17 tonnes

Rough terrain and rugged, 4x4 articulated NextGen pick 'n' move crane



- CEV Stage IV Engine
- Better Creep Speed
- Improved kinematics
- Better Center of Gravity
- Slotted boom
- Self Adjusting hook block
- Fail safe Air brakes

4x4



Specifications

F 170

LIFTING CAPACITY	17 Tonnes
ENGINE	Volvo Eicher (CEV Stage IV) Diesel Engine Model E483 CRDi, 4 cylinder, Water Cooled, Turbo Charged Engine with Electronic Control Unit (ECU)
Max. Rating	74 HP (55kW) at 2200 RPM
TRANSMISSION	Heavy Duty Synchromesh with 10 Forward and 2 reverse speeds. Auxilliary Gear Box with 2WD-High / 4WD-Low selector.
Axles	Front axle is rigidly mounted on the chassis and Rear axle is mounted with 2 Nos. leaf Springs.
Drive	2 / 4 Wheel drive.
Clutch	Heavy Duty, single, dry friction type hydraulic clutch.
Top Speed	38 Kmph on even metallated Road (without load)
Creep Speed	1.3 Kmph
Gradeability	40 % (unladen)
BRAKES	Pneumatically operated dual circuit brakes on Front and Rear wheels. Parking brake is pneumatically operated spring actuated fail safe type.
STEERING	Hydraulically operated steering wheel with 40° Articulation on either side and turning radius of 7.5 Mtrs (approx) on outer rear wheels.
HYDRAULIC SYSTEM	<ul style="list-style-type: none"> • Gear / Infra Vane type Main Pump. Five spools control valve with built in Relief Valve. • Suction line has 100 mesh size Strainer while return line is fitted with 25 micron filter. • Two double acting lift cylinders, one double acting extension cylinder and two double acting steering cylinders.
TELESCOPIC BOOM	4 part slotted boom, 2 part hydraulically operated & synchronized and 4th part power extended (18.9 mtrs height)
BOOM LUFFING Range	- 7° to + 70°

HOIST	Winch is driven by hydraulic motor and fitted with rope tensioner. Hoisting is provided through self adjusting hook block employing 4/6 falls of 13 mm dia rope
Hoist Speed	50 Mtrs./Min. (Line Speed)
TYRES	11.00 x 20 - 16 PR (8 Nos.)
Wheel Base	4150 mm
Wheel Track	1825 mm
ELECTRICAL SYSTEM	12v, Negative Earth (100 AH Battery)
SAFETY	<ul style="list-style-type: none"> • Hose Failure Protection • Audio Over hoisting Indication • Safety Brakes on Hoist • Self-Adjusting Hook Block • Front and rear wheel guards
STANDARD EQUIPMENT	<ul style="list-style-type: none"> • ROPS fully enclosed wide view cabin • Front work lights • Reflectors and rear view mirror • Tool kit • Cabin fan • Wiper motor • Instrument Cluster :- <ol style="list-style-type: none"> a) Fuel level gauge b) Air pressure gauge c) Oil pressure gauge d) Coolant temp e) Engine RPM f) Speedometer g) Odo meter h) Engine Hour Recorder i) Fault Detector Codes (P-Codes) • Rear view camera • Front Outriggers
OPTIONAL EQUIPMENT	<ul style="list-style-type: none"> • Fly jib (1.25 Tonnes Max. Capacity) • Safe load indicator/ LMI • Over Hoist hydraulic cutoff • Fire extinguisher • Cabin Front Glass Protector • Helper / Slinger Seat • Drag Winch • Spark arrestor • 4 part slotted boom (15.5 mtrs. height) • Front & Side Proximity Sensors • Volvo Eicher 101 HP Engine • Beacon Rotating Light • Man Basket Attachment • Fork Attachment • Ram Attachment
OPERATING WEIGHT	17000 Kgs.

ACE

F170



100%
Swadeshi



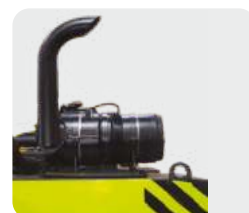
ECU

Electronic control unit for better fuel economy and diagnostic trouble shooting



ROPS CABIN

Front mounted, ergonomically designed Cabin for better visibility and driveability.



ATS

After treatment system for Emission Control in 101 HP variant



ENGINE

Volvo Eicher (CEV Stage IV) CRDi Diesel Engine Model E483 with nation wide service support and spares availability



ELECTRONIC CLUSTER

Digital Electronic Cluster with advanced features.



OPTIMIZED KINEMATICS AND LOW C.G.

F 170 crane has been designed for operational safety with low Center of Gravity (C.G.) providing best in class stability



STEERING WHEEL & CONTROLS

Ergonomically placed operator console and instrument cluster ensures ease of operation.



INCREASED VISIBILITY

Bigger size front windscreen and re-routing of hoses provide much better front visibility.

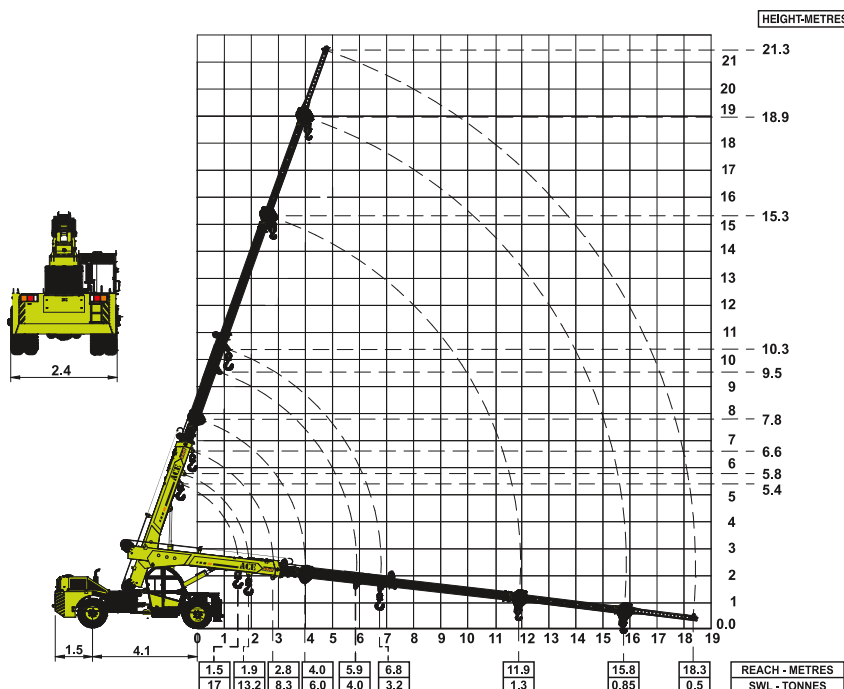


OUTRIGGERS

Front Outriggers for added safety during high lift operations.

F170 Crane with 4 part boom + Flyjib (21.3 mtrs. height)

- Max. Capacity Fly jib : 1.25 Tonnes
- Max. Capacity manual extension : 2.0 Tonnes



NOTE - SWL ARE BASED ON 85% STABILITY & STRENGTH

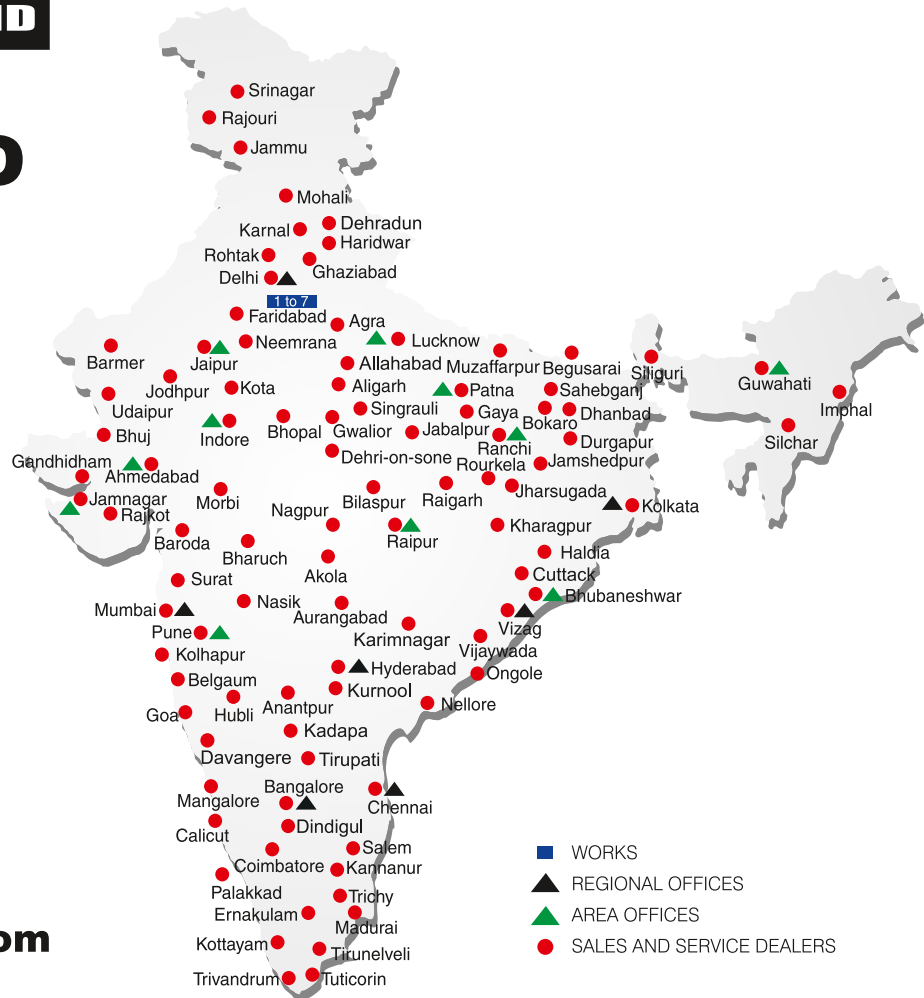
ALL DIMENSIONS IN METERS 5%

BUILT TO PERFORM



RELIABLE AND DEPENDABLE EFFICIENCY

NETWORK



Toll Free Help Line
1800 1800 004

www.ace-cranes.com

MARKETING H.Q.

4th Floor, Pinnacle
 Surajkund, NCR-121009
 Ph.: +91-129-4550000
 Fax: +91-129-4550022
 E-mail: marketing@ace-cranes.com

REGISTERED OFFICE

Dudhola Link Road, Dudhola
 Palwal-121102, Haryana
 Ph.: +91-1275-280111
 Fax: +91-1275-280133
 CIN: L74899HR1995PLC053860

MUMBAI OFFICE

31, "Kalpataru Court"
 Chembur, Mumbai - 400074
 Ph.: +91-22-25206846, 25207070
 Fax: +91-22-25207071
 E-mail: acemumbai@ace-cranes.com

KOLKATA OFFICE

"Forma Towers" 84-A, Second Floor
 A/C Bose Road, Kolkata - 700014
 Ph.: +91-9038070630
 E-mail: acekolkata@ace-cranes.com

CHENNAI OFFICE

1st Floor, "Alsa Regency", 165
 Eldams Road, Alwar Pet
 Chennai - 600018
 Ph.: +91-44-24314253
 Fax: +91-44-24314252
 E-mail: acechennai@ace-cranes.com

HERE TO SERVE YOU.

SPARE PARTS & SERVICE

ACE has all India Sales and Service network operating out of all the major cities. These outlets are fully equipped to provide genuine spare parts and services by company trained engineers. These outlets are further supported by company officials based at Delhi, Mumbai, Chennai, Kolkata, Ahmedabad, Surat, Pune, Jaipur, Chandigarh, Ranchi, Raipur, Indore, Bhubaneswar, Lucknow, Jamnagar, Hyderabad, Bangalore, Guwahati, Patna, Vizag & Kochi.



Action Construction Equipment Ltd.

Contact:



ACE reserves the right to alter any specifications without prior notice. Dimensions, weights & capacities mentioned herein are variable by $\pm 5\%$. Accessories if shown are not part of the Standard Equipment.

F17012/22