

# ACE FX250

## NextGen Hydraulic Crane Capacity : 25 tonnes

Rough terrain and rugged  
articulated new generation pick n move crane.



- Front outriggers
- Heavy duty drive line
- Front mounted ergonomically designed Cabin
- Improved kinematics with low Center of Gravity
- Slotted boom
- Self Adjusting hook block
- Fail safe air brakes



## Specifications

## FX250

|   |  |
|---|--|
| <b>LIFTING CAPACITY</b><br>(Free on wheels) | 25 Tonnes  |
| <b>ENGINE</b>                               | Ashok Leyland, 6 cylinder, water cooled diesel engine or equivalent  |
| Rated Power                                 | 133 HP at 2300 RPM   |
| <b>TRANSMISSION</b>                         | Heavy duty, Synchromesh with 8 forward and 2 reverse speeds and hi-low drive selector for creep speed  |
| Axles                                       | Front axle is rigidly mounted on the chassis and rear drive axle is mounted with 2 nos. leaf springs   |
| Clutch                                      | Heavy duty hydraulic clutch  |
| Top Speed                                   | 35 KMPH on even metaled road (without load)  |
| Gradeability                                | 36% (unladen)  |
| <b>HYDRAULIC SYSTEM</b>                     | <ul style="list-style-type: none"> <li>● Gear/Intra Vane type Main Pump</li> <li>● Five spools control valve with built in Relief valve (Heavy Duty)</li> <li>● Suction line has 100 mesh size Strainer while return line is fitted with 25 micron full flow filter.</li> <li>● Two double acting lift cylinders, two double acting steering cylinders, one acting extension cylinder and two double acting outrigger cylinders</li> </ul> |
| <b>STEERING</b>                             | Full power orbitrol with twin hydraulic double acting cylinders and 40° articulation on either side.   |
| Turning Radius                              | 8.2 Meters (approx)  |
| <b>TYRES</b>                                |  |
| Front                                       | 12.00 x 24 - 20 PR (4 Nos.)  |
| Rear  | 17.50 x 25 - 20 PR (2 Nos.)  |
| Wheel base                                  | 5100 mm  |
| Wheel track                                 | Front 1900 mm<br>Rear 1770 mm  |
| <b>BRAKES</b>                               | <ul style="list-style-type: none"> <li>● Dual Circuit Brakes</li> <li>● Fully pneumatic brakes on front and rear wheels</li> <li>● Parking brake is pneumatically operated, fail safe type.</li> </ul>   |
| <b>ELECTRICAL SYSTEM</b>                    | 24 V Negative earth  |
| <b>TELESCOPIC BOOM</b>                      | Three part slotted boom with hydraulically operated synchronized extensions (12 mtrs. height)  |

|                           |  |
|---------------------------|--|
| <b>HOIST</b>              | Winch is driven by hydraulic motor and fitted with rope tensioner. Hoisting is provided through self adjusting hook block employing 6 falls of 13 mm dia steel core anti twist rope.   |
| Hoist Speed               | 50 Mtrs./Min. (Line speed)   |
| <b>BOOM LUFFING</b>       |  |
| Range                     | -3° to + 66°   |
| <b>SAFETY</b>             | <ul style="list-style-type: none"> <li>● Hose failure protection</li> <li>● Audio over hoisting indication</li> <li>● Safety brakes on hoist</li> <li>● Self adjusting hook block</li> <li>● Front and rear wheel guards</li> </ul>  |
| <b>STANDARD EQUIPMENT</b> | <ul style="list-style-type: none"> <li>● Front Outriggers</li> <li>● Front mounted fully enclosed wide view cabin</li> <li>● Rear View Camera</li> <li>● Front and rear work lights</li> <li>● Beacon rotating light</li> <li>● Reflectors &amp; Rear View Mirrors</li> <li>● Tool Kit</li> <li>● Cabin Fan</li> <li>● Wiper Motor</li> <li>● Gauges: <ul style="list-style-type: none"> <li>a) Water temperature</li> <li>b) Engine oil pressure</li> <li>c) Fuel Gauge</li> <li>d) RPM meter cum hour recorder</li> <li>e) Air Pressure Gauge</li> <li>f) Speedometer</li> </ul> </li> </ul> |
| <b>OPTIONAL EQUIPMENT</b> | <ul style="list-style-type: none"> <li>● Fly Jib (1.25 Tonnes Max Capacity)</li> <li>● Spark arrester</li> <li>● Safe load indicator/LMI</li> <li>● Over Hoist hydraulic cutoff</li> <li>● Fire Extinguisher</li> <li>● Drag winch</li> <li>● Front and side Proximity Sensors</li> <li>● Cabin Front Glass Protector</li> <li>● 4 part slotted boom, 2 parts hydraulically operated &amp; synchronized and 4th part power extended (18.3 mtrs. height)</li> <li>● Helper/Slinger Seat</li> </ul>  |



### OPTIMIZED KINEMATICS AND LOW C.G.

FX 250 crane has been evolved/ designed keeping in mind operational safety parameters with low Center of Gravity (C.G.) providing best in class stability.

### OPERATING WEIGHT

|              |            |
|--------------|------------|
| Front Axle   | 10000 Kgs. |
| Rear Axle    | 10200 Kgs. |
| Total Weight | 20200 Kgs. |





- 1 INCREASED VISIBILITY**  
Bigger size front windscreen provided for better visibility and safe operation.



- 2 EASY MAINTENANCE**  
The engine is easily accessible for daily maintenance checks including battery, air filter, oil level dipstick and cooling system.



- 3 HYDRAULIC & FUEL TANK**  
Easy approach and adequate capacities



- 4 OUT TRIGGERS**  
Front outriggers are provided as standard fitment for added safety during high lift operations.



- 5 GROUND CLEARANCE**  
Ground clearance of 300mm for easier rough terrain operation.



- 6 STEERING WHEEL & CONTROLS**  
Steering wheel is provided as a standard feature, which along with ergonomically placed operator console and instrument cluster ensures ease of operation.



- 7 DRAG WINCH**  
Optionally Drag Winch is available for pulling & tugging applications

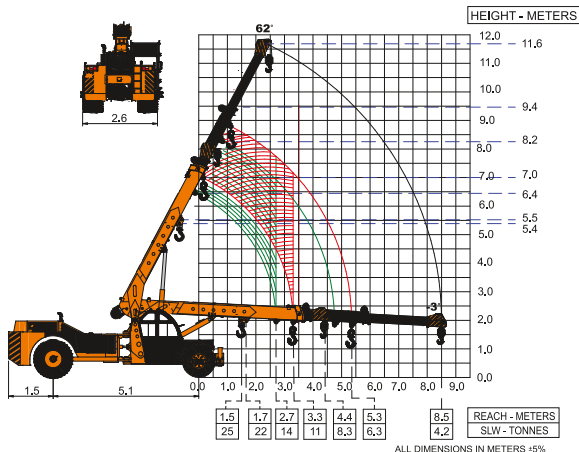


- 9 ENGINE**  
Best in class Ashok Leyland 6 Cylinder engine having nationwide service support and spare parts availability.



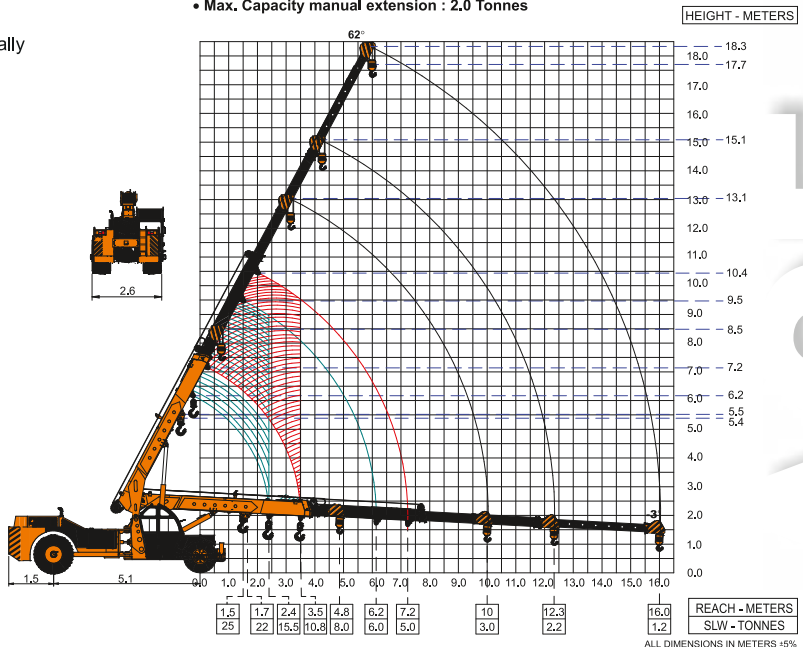
- 10 CABIN**  
Front mounted, ergonomically designed Cabin for better visibility and driveability.

**ACE FX250 Model Crane fitted with 3 part slotted boom (11.6 Mtrs. height)**



**ACE FX250 Crane fitted with 3 part slotted boom + 1 Manual (18.3 Mtrs. height)**

- Max. Capacity Fly jib : 1.25 Tonnes
- Max. Capacity manual extension : 2.0 Tonnes



**NOTE:** • All the above specifications are pertaining to FX250 model fitted with 11.6 Mtrs. boom. • Rated loads are on the basis of operation on firm and level surface.  
• Full rated lifting capacity available in articulated / steered condition.

## A horizontal row of ten yellow construction vehicles. From left to right: a mobile crane, a small wheel loader, a larger wheel loader, a truck-mounted crane, a crawler crane, a large crawler crane with a long boom, a small wheel loader, a small wheel loader, a small wheel loader, and a large tower crane.



**Legend:**

- WORKS
- REGIONAL OFFICES
- AREA OFFICES
- SALES AND SERVICE DEALERS



1st Floor, "Alsa Regency", 165  
Eldams Road, Alwar Pet  
Chennai - 600018  
Ph.: +91-44-24314253  
Fax: +91-44-24314252  
E-mail: [acechennai@ace-cranes.com](mailto:acechennai@ace-cranes.com)

ACE reserves the right to alter any specifications without prior notice. Dimensions, weights & capacities mentioned herein are variable by + 5%. Accessories if shown are not part of the Standard Equipment.