

ACE FX300

Nextgen Hydraulic Crane Capacity: 30 tonnes

Rough terrain and rugged articulated nextgen pick n move crane.



- CEV stage IV engine
- Front outriggers
- Heavy duty drive line
- Improved kinematics with low Center of Gravity
- Slotted boom
- Self adjusting hook block
- Fail safe air brakes



Specifications

FX-300

LIFTING CAPACITY (Free on wheels)	30 Tonnes
ENGINE	Ashok Leyland, CEV BS IV, 4 Cylinder, Water Cooled, Diesel Engine, Model H4C413022 with Electronic Control Unit (ECV)
Rated Power	130 HP (95 kw) at 2200 RPM
TRANSMISSION	Heavy duty, Synchromesh with 12 forward and 2 reverse speeds and hi-low drive selector for creep speed
Axles	Front axle is rigidly mounted on the chassis and rear drive axle is mounted with 2 nos. heavy duty leaf springs
Clutch	Heavy duty hydraulic clutch
Top Speed	35 KMPH on even metalled road (without load)
Gradeability	36% (unladen)
HYDRAULIC SYSTEM	<ul style="list-style-type: none"> ● Gear/Intra Vane type Main Pump ● Five spools control valve with built in Relief valve (Heavy Duty) ● Suction line has 100 mesh size strainer while return line is fitted with 25 micron full flow filter. ● Two double acting lift cylinders, two double acting steering cylinder, one double acting extension cylinder and two double acting outrigger cylinders
STEERING	Full power orbitrol with twin hydraulic double acting cylinders and 40° articulation on either side.
Turning Radius	8.2 Meters (approx)
TYRES	
Front	12.00 x 24 - 20 PR (4 Nos.)
Rear	17.50 x 25 - 20 PR (2 Nos.)
Wheel base	5100 mm
Wheel track	Front 1900 mm Rear 1770 mm
BRAKES	<ul style="list-style-type: none"> ● Dual Circuit Brakes ● Fully pneumatic brakes on front and rear wheels ● Parking brake is pneumatically operated, fail safe type.
ELECTRICAL SYSTEM	12 V Negative earth (100 Ah battery)
TELESCOPIC BOOM	Three part slotted boom with hydraulically operated synchronized extensions (11.4 mtrs. height)

HOIST	Winch is driven by hydraulic motor and fitted with rope tensioner. Hoisting is provided through self adjusting hook block employing 6 falls of 13 mm dia steel core anti twist rope.
Hoist Speed	35 Mtrs./Min. (Line speed)
BOOM LUFFING	
Range	-3° to + 66°
SAFETY	<ul style="list-style-type: none"> ● Hose failure protection ● Audio over hoisting indication ● Safety brakes on hoist ● Self adjusting hook block ● Front and rear wheel guards
STANDARD EQUIPMENT	<ul style="list-style-type: none"> ● Front Outriggers ● Front mounted fully enclosed wide view cabin ● Rear View Camera ● Front and rear work lights ● Reflectors & Rear View Mirrors ● Tool Kit ● Cabin Fan ● Beacon rotating light ● Wiper Motor ● Gauges: <ul style="list-style-type: none"> a) Water temperature b) Engine oil pressure c) Fuel Gauge d) RPM meter cum hour recorder e) Air Pressure Gauge f) Speedometer
OPTIONAL EQUIPMENT	<ul style="list-style-type: none"> ● Fly Jib (1.25 Tonnes Max Capacity) ● Safe load indicator/LMI ● Over Hoist hydraulic cutoff ● Fire Extinguisher ● Drag winch ● Front and side Proximity Sensors ● 4 Part slotted boom (18.1 mtrs. height) ● Cabin Front Glass Protector ● Spark arrester ● Helper/Slinger Seat
OPERATING WEIGHT	
Total Weight	20300 Kgs.



INCREASED VISIBILITY

Bigger size front windscreen provided for better visibility and safe operation



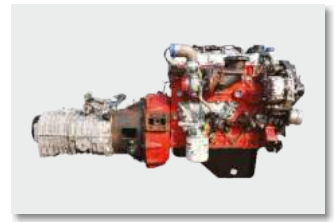
EASY MAINTENANCE

The engine is easily accessible for daily maintenance checks including battery, air filter, oil level dipstick and cooling system.



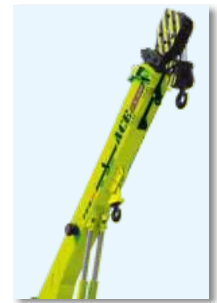
STEERING WHEEL & CONTROLS

Steering wheel is provided as a standard feature, which along with ergonomically placed operator console and instrument cluster ensures ease of operation



ENGINE

Ashok leyland (CEV BSIV), 4 cylinder water cooled diesel engine, model H4C413022 with Electronic Control Unit (ECU)



SLOTTED BOOM

Facilitates easier load positioning and fitted with self adjusting hook block.



CABIN

Front mounted, ergonomically designed Cabin for better visibility and driveability.

OPTIMIZED KINEMATICS AND LOW C.G.

FX 300 crane has been evolved/designed keeping in mind operational safety parameters with low Center of Gravity (C.G.) providing best in class stability.



DRAG WINCH

Optionally Drag Winch is available for pulling & tugging applications



OUT TRIGGERS

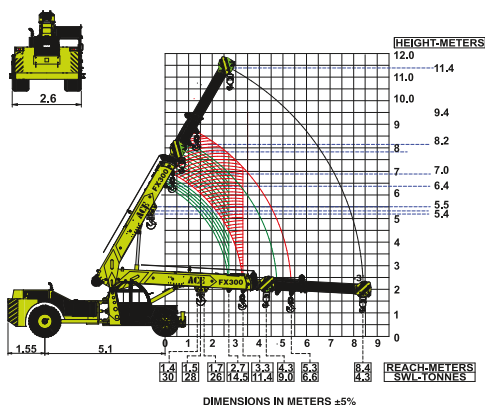
Front outriggers are provided as standard fitment for added safety during high lift operations.



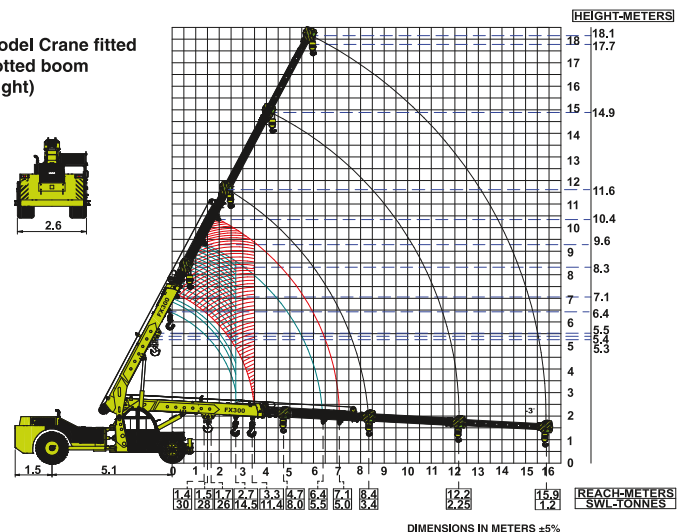
GROUND CLEARANCE

Ground clearance of 300mm for easier rough terrain operation

ACE FX300 Model Crane fitted with 3 part slotted boom (11.4 Mtrs. height)



ACE FX300 Model Crane fitted with 4 part slotted boom (18.1 Mtrs. height)



A horizontal row of ten different yellow and orange construction vehicles. From left to right, they include: a mobile crane, a backhoe loader, a wheel loader, a crawler crane, a crawler crane with a bucket, a backhoe loader, a mobile crane on a truck chassis, a small wheel loader, a small wheel loader, and a large tower crane.



Legend:

- WORKS
- REGIONAL OFFICES
- AREA OFFICES
- SALES AND SERVICE DEALERS

