

# ACE FX230

## NextGen Hydraulic Crane Capacity : 23 tonnes

Rough terrain and rugged  
articulated new generation pick n move crane.



- CEV stage IV engine
- Front outriggers
- Heavy duty drive line
- Improved kinematics with low Center of Gravity
- Slotted boom
- Self adjusting hook block
- Fail safe air brakes
- Better creep speed



## Specifications

## FX230

<b>LIFTING CAPACITY</b> (Free on wheels)	23 Tonnes
<b>ENGINE</b>	Volvo Eicher (CEV Stage IV) Diesel Engine Model E483 CRDi, 4 cylinder, Water Cooled, Turbo Charged Engine with Electronic Control Unit (ECU)
Rated Power	101 hp (74 KW) at 2200 RPM
<b>STEERING</b>	Full power orbitrol with twin hydraulic double acting cylinders and 40° articulation on either side.
Turning Radius	8.2 Meters (approx)
<b>TRANSMISSION</b>	Heavy Duty Synchromesh with 10 Forward and 2 reverse speeds. Auxiliary Gear Box with Hi/Low
Axles	Front axle is rigidly welded on the chassis and Rear drive axle is mounted with 2 nos. Leaf springs
Clutch	Heavy duty, single dry friction type hydraulic clutch
Top Speed	36 KMPH on even melted (without load)
Creep Speed	1.3 KMPH
Gradeability	40 % (unladen)
<b>HYDRAULIC SYSTEM</b>	<ul style="list-style-type: none"> <li>● Gear/Intra Vane type Main Pump</li> <li>● Five spools control valve with built in Relief valve</li> <li>● Suction line has 100 mesh size Strainer while return line is with 25 micron filter.</li> <li>● Two double acting lift cylinders, two double acting steering cylinder and one double acting extension cylinder</li> </ul>
<b>BRAKES</b>	<ul style="list-style-type: none"> <li>● Dual Circuit Brakes</li> <li>● Fully air actuated brakes on front and rear wheels</li> <li>● Parking brake is pneumatically operated, fail safe type.</li> </ul>
<b>ELECTRICAL SYSTEM</b>	12v, Negative Earth (100 AH Battery)
<b>TELESCOPIC BOOM</b>	Three part slotted boom with hydraulically operated synchronized extensions (11.6 mtrs. height)
<b>TYRES</b> Front Rear	12.00 x 24 - 20 PR (4 Nos.) 14.00 x 25 - 20 PR (2 Nos.)
Wheel base Wheel track	5100 mm Front 1900 mm Rear 1770 mm



### HOIST

3.9 Tonnes Line Pull Winch is driven by hydraulic motor and fitted with rope tensioner. Hoisting is provided through self adjusting hook block employing 6 falls of 13 mm dia rope.

Hoist Speed

35 Mtrs./Min. (Line speed)

### BOOM LUFFING Range

-3° to + 62°

### SAFETY

- Hose failure protection
- Audio over hoisting indication
- Safety brakes on hoist
- Self adjusting hook block
- Front and rear wheel guards

### STANDARD EQUIPMENT

- ROPS fully enclosed wide view cabin
- Front work lights
- Reflectors and rear view mirror
- Tool kit
- Cabin fan
- Wiper motor
- Instrument Cluster :-
  - a) Fuel level gauge
  - b) Air pressure gauge
  - c) Oil pressure gauge
  - d) Coolant temp
  - e) Engine RPM
  - f) Speedometer
  - g) Odo meter
  - h) Engine Hour Recorder
  - i) Fault Detector Codes (P-Codes)
- Rear view camera
- Front Outriggers
- Beacon Rotating Light

### OPTIONAL EQUIPMENT

- Fly jib (1.25 Tonnes Max. Capacity)
- Safe load indicator/ LMI
- Over Hoist hydraulic cutoff
- Fire extinguisher
- Cabin Front Glass Protector
- Helper / Slinger Seat
- Drag Winch
- Spark arrestor
- 4 part slotted boom (18.3 mtrs. height)
- Front & Side Proximity Sensors
- Man Basket Attachment
- Fork Attachment
- Ram Attachment

### OPTIMIZED KINEMATICS AND LOW C.G.

FX 230 crane has been designed keeping in mind operational safety parameters with low Center of Gravity (C.G.) to provide best in class stability.

### OPERATING WEIGHT

19300 Kgs.



## CABIN

Front mounted, ergonomically designed Cabin for better visibility and driveability.



## STEERING WHEEL & CONROLS

Ergonomically placed operator console and instrument cluster ensures ease of operation.



## GROUND CLEARANCE

Ground clearance of 300 mm for easier rough terrain operation.



## EASY MAINTENANCE

The engine is easily accessible for daily maintenance checks including battery, air filter, oil level dipstick and cooling system.



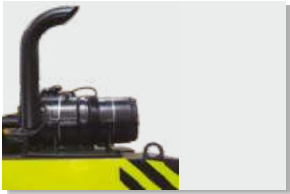
## ECU

Electronic control unit for better fuel economy and diagnostic trouble shooting



## OUT TRIGGERS

Front outriggers are provided as standard fitment for added safety during high lift operations.



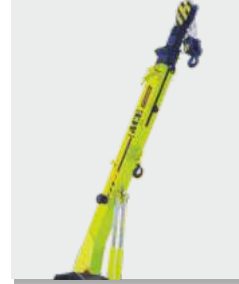
## ATS

After treatment system for Emission Control



## ELECTRONIC CLUSTER

Digital Electronic Cluster with advanced features.



## SLOTTED BOOM

Facilities easier load positioning and fitted with self adjusting hook block.



## ENGINE

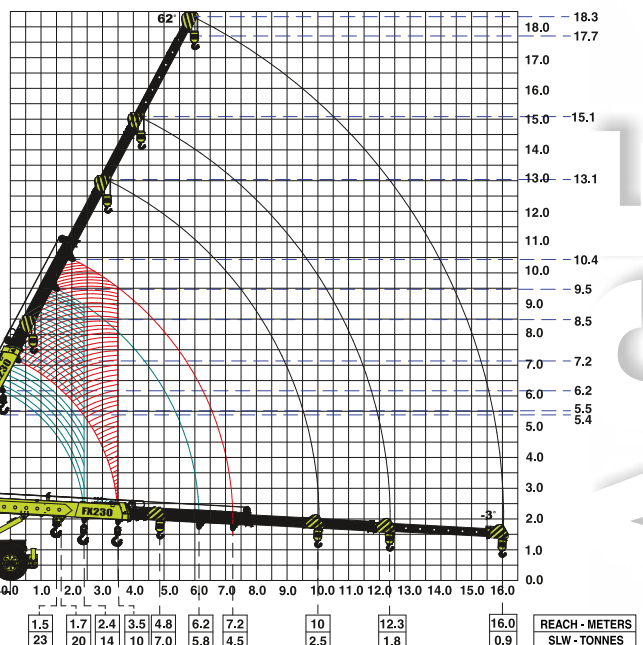
Volvo Eicher (CEV Stage IV) CRDi Diesel Engine Model E483 with nation wide service support and spares availability



## ACE FX230 Crane fitted with 4 part slotted boom (18.3 Mtrs. height)

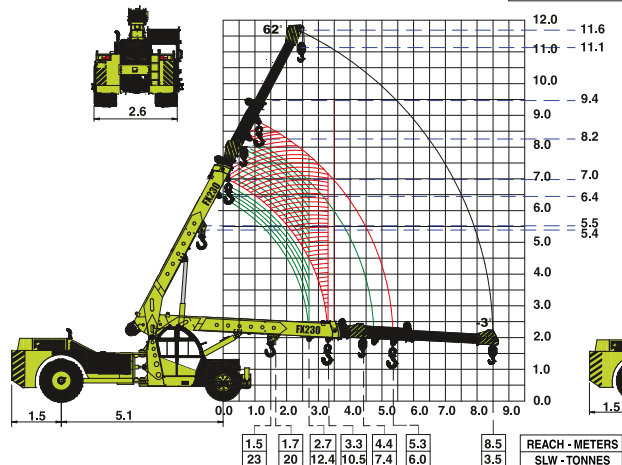
- Max. Capacity Fly jib : 1.25 Tonnes
- Max. Capacity manual extension : 2.0 Tonnes

HEIGHT - METERS



## ACE FX230 Crane fitted with 3 part slotted boom (11.6 Mtrs. height)

HEIGHT - METERS

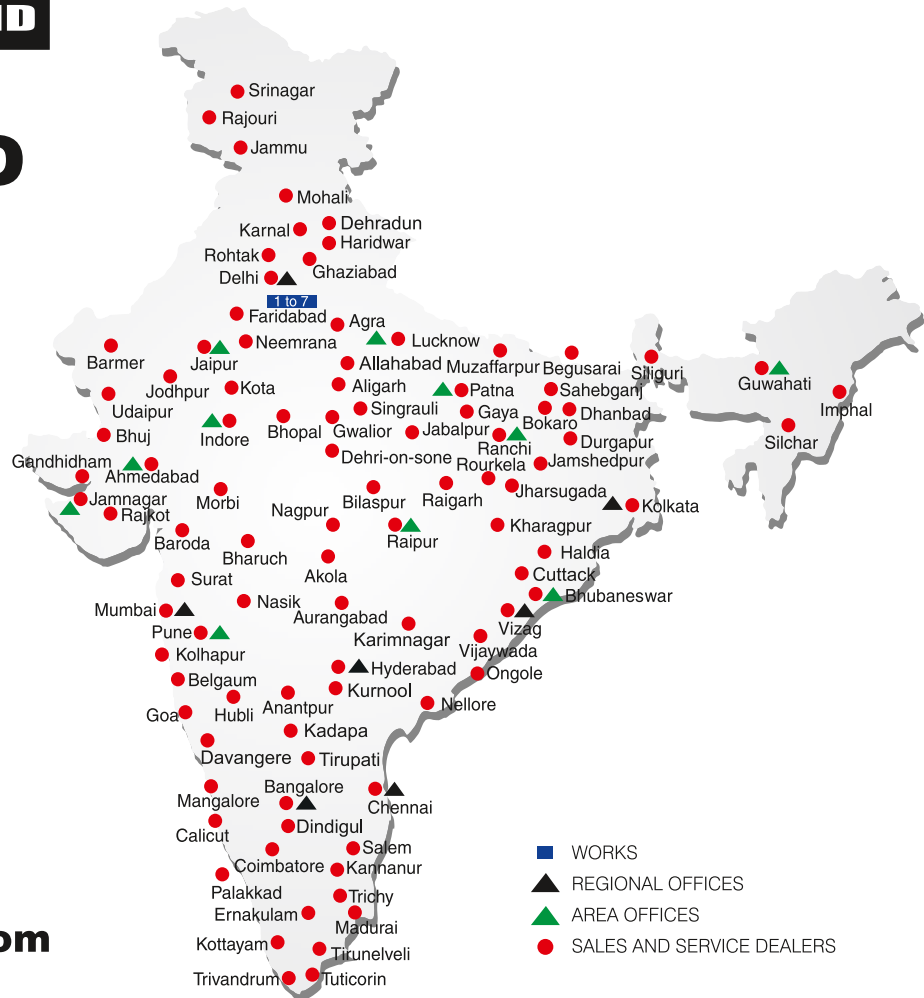


# BUILT TO PERFORM



**RELIABLE AND  
DEPENDABLE  
EFFICIENCY**

## NETWORK



**Toll Free Help Line  
1800 1800 004**

**www.ace-cranes.com**

### MARKETING H.Q.

4th Floor, Pinnacle  
Surajkund, NCR-121009  
Ph.: +91-129-4550000  
Fax: +91-129-4550022  
E-mail: marketing@ace-cranes.com

### REGISTERED OFFICE

Dudhola Link Road, Dudhola  
Palwal-121102, Haryana  
Ph.: +91-1275-280111  
Fax: +91-1275-280133  
CIN: L74899HR1995PLC053860

### MUMBAI OFFICE

31, "Kalpataru Court"  
Chembur, Mumbai - 400074  
Ph.: +91-22-25206846, 25207070  
Fax: +91-22-25207071  
E-mail: acemumbai@ace-cranes.com

### KOLKATA OFFICE

"Forma Towers" 84-A, Second Floor  
AJC Bose Road, Kolkata - 700014  
Ph.: +91-9038070630  
E-mail: acekolkata@ace-cranes.com

### CHENNAI OFFICE

1st Floor, "Alsa Regency", 165  
Eldams Road, Alwar Pet  
Chennai - 600018  
Ph.: +91-44-24314253  
Fax: +91-44-24314252  
E-mail: acechennai@ace-cranes.com

## HERE TO SERVE YOU.

### SPARE PARTS & SERVICE

ACE has all India Sales and Service network operating out of all the major cities. These outlets are fully equipped to provide genuine spare parts and services by company trained engineers. These outlets are further supported by company officials based at Delhi, Mumbai, Chennai, Kolkata, Ahmedabad, Surat, Pune, Jaipur, Chandigarh, Ranchi, Raipur, Indore, Bhubaneswar, Lucknow, Jamnagar, Hyderabad, Bangalore, Guwahati, Patna, Vizag & Kochi.



**Action Construction Equipment Ltd.**

Contact:



ACE reserves the right to alter any specifications without prior notice. Dimensions, weights & capacities mentioned herein are variable by  $\pm 5\%$ . Accessories if shown are not part of the Standard Equipment.