

ACE FX210

Nextgen Hydraulic Truck Crane

20 tonnes Capacity.
Rough terrain and rugged
articulated new generation pick n move crane.

- Heavy duty truck drive line
- Front Outriggers
- Front mounted ergonomically designed Cabin
- Improved kinematics with low Center of Gravity
- Slotted boom
- Self Adjusting hook block
- Fail safe air brakes



**INDIA'S NO. 1
CRANE BRAND**



Specifications

FX210

LIFTING CAPACITY (Free on wheels)	20 Tonnes	Wheel base	5100 mm
ENGINE	Ashok Leyland 4 cylinder, water cooled diesel engine or equivalent TATA engine	Wheel track	Front 1880 mm Rear 1850 mm
Rated Power	101 hp at 2200 RPM	HOIST	Winch is driven by hydraulic motor and fitted with rope tensioner. Hoisting is provided through self adjusting hook block employing 6 falls of 13 mm dia rope
STEERING	Full power orbitrol with twin hydraulic double acting cylinders and 40° articulation on either side.	Hoist Speed	50 Mtrs./Min. (Line speed)
Turning Radius	8.2 Meters (approx)	BOOM LUFFING Range	-3° to + 62°
TRANSMISSION	Heavy duty, Synchromesh with 8 forward and 2 reverse speeds and hi-low drive selector for creep speed	SAFETY	<ul style="list-style-type: none"> ● Hose failure protection ● Audio over hoisting indication ● Safety brakes on hoist ● Self adjusting hook block ● Front & Rear Tyre guards
Axles	Front axle is rigidly mounted on the chassis and rear drive axle is mounted with 2 nos. leaf springs	STANDARD EQUIPMENT	<ul style="list-style-type: none"> ● Front Outriggers ● Front mounted fully enclosed wide view cabin ● Rear View Camera ● Front and rear work lights ● Reflectors & Rear View Mirrors ● Tool kit ● Cabin Fan ● Wiper Motor ● Gauges : <ul style="list-style-type: none"> a) Water temperature b) Engine oil pressure c) Fuel Gauge d) RPM meter cum hour recorder e) Air Pressure Gauge f) Speedometer g) Beacon Rotating Light
Clutch	Heavy duty hydraulic clutch	OPTIONAL EQUIPMENT	<ul style="list-style-type: none"> ● Fly jib (Max Capacity : 1.25 Tonnes) ● Spark arrestor ● Safe load indicator/LMI ● Over Hoist hydraulic cutoff ● Fire Extinguisher ● Drag Winch ● Front and side Proximity Sensors ● Cabin Front Glass Protector ● 4 part slotted boom, 3 parts hydraulically operated & synchronized and 4th part power extended (18.3 mtrs. height)
Top Speed	35 KMPH on even metaled road (without load)	OPERATING WEIGHT	
Gradeability	40% (unladen)	Front Axle	7200 Kgs.
HYDRAULIC SYSTEM	<ul style="list-style-type: none"> ● Gear/Intra Vane type Main Pump ● Five spools control valve with built in Relief valve (Heavy duty) ● Suction line has 100 mesh size Strainer while return line is fitted with 25 micron full flow filter ● Two double acting lift cylinders, two double acting steering cylinders and one double acting extension cylinder 	Rear Axle	10100 Kgs.
BRAKES	<ul style="list-style-type: none"> ● Dual Circuit Brakes ● Fully air actuated brakes on front and rear wheels. ● Parking brake is pneumatically operated, fail safe type 	Total Weight	17300 Kgs.
ELECTRICAL SYSTEM	24 V Negative earth		
TELESCOPIC BOOM	Three part slotted boom with hydraulically operated synchronized extensions (11.6 mtrs. height)		
TYRES			
Front	12.00 x 20 - 18 PR (4 Nos.)		
Rear	14.00 x 25 - 20 PR (2 Nos.)		



OPTIMIZED KINEMATICS AND LOW C.G.
FX 210 crane has been designed with low center of gravity (C.G.) providing best in class stability and operational safety.



- 1 GROUND CLEARANCE**
Ground clearance of 300mm for easier rough terrain operation.



- 2 STEERING WHEEL & CONTROLS**
Steering wheel is provided as a standard fitment, which along with ergonomically placed operator console and instrument cluster ensures ease of operation.



- 3 CABIN**
Front mounted, ergonomically designed Cabin for better visibility and driveability.



- 4 EASY MAINTENANCE**
The engine is easily accessible for daily maintenance checks including battery, air filter, oil level and cooling system.



- 5 OUT TRIGGERS**
Front outriggers are provided as a standard feature for added safety during high lift operations.



- 7 INCREASED VISIBILITY**
Bigger size front windscreen provided for better visibility and safe operation.



- 8 ENGINE**
Best in class Ashok Leyland/TATA 4 Cylinder engine having nationwide service support and spare parts availability.



- 6 SLOTTED BOOM**
Facilitates easier load positioning and fitted with self adjusting hook block.



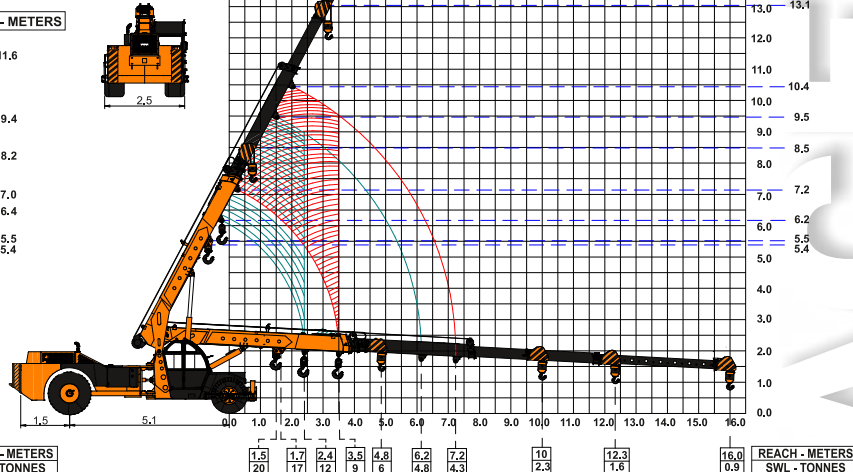
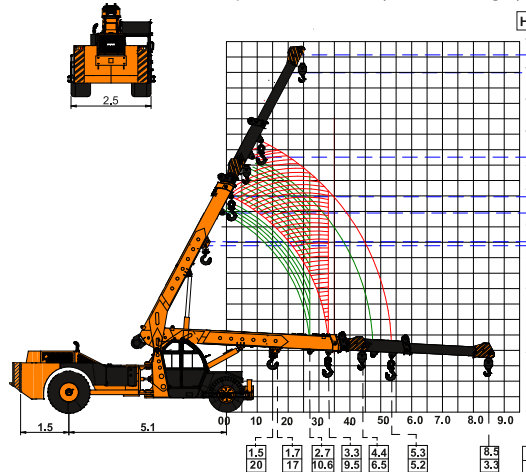
- 9 DRAG WINCH**
Optionally available for pulling and tugging application(s)



ACE FX210 Model Crane fitted with
4 part slotted boom (18.3 Mtrs. height)
Max. Capacity Manual Extension : 2 Tonnes

HEIGHT - METERS

ACE FX210 Model Crane fitted with
3 part slotted boom (11.6 Mtrs. height)



NOTE: • All the above specifications are pertaining to FX210 model fitted with 11.6 Mtrs. boom. • Rated loads are on the basis of operation on firm and level surface.
• Full rated lifting capacity available in articulated steered condition

A horizontal row of ten yellow construction vehicles. From left to right: a small excavator, a small tractor, a small loader, a medium-sized crane on a truck chassis, a large crawler crane, a large crawler crane with a long boom, a small loader, a small tractor, a small tractor, and a large tower crane.



A map of India illustrating the geographical distribution of various types of offices and service points. The legend indicates four categories: WORKS (blue square), REGIONAL OFFICES (black triangle), AREA OFFICES (green triangle), and SALES AND SERVICE DEALERS (red circle). Major cities are labeled across the country, with red circles indicating the presence of sales and service dealers. Green triangles indicate area offices, while black triangles indicate regional offices. Blue squares indicate works locations. The map shows a dense network of these facilities across all major regions of India.



www.ace-cranes.com

HERE TO SERVE YOU.